

ChelinoBaby®

Stores: ChelinoBaby – Ormonde - JHB
ChelinoBaby – Fourways – JHB
ChelinoBaby – Menlyn – Pretoria
ChelinoBaby – Kolonnade-Pretoria
ChelinoBaby – Gateway - Durban
ChelinoBaby – Online –www.chelinobaby.co.za



Imported for :
Chelino Baby Group of Companies
No. 12 Kimberlite Road, Theta Ext 5, Booyens Reserve,
JHB, 2091 S.A.
Tel: +27 11 8352520
Info: info@chelino.co.za

Chelino®

BLAZER II INSTRUCTION MANUAL



0-36 kgs
Group 0+, I , II, III

Due to variation on the styles and designs of our products, the photographs and illustrations shown in this manual are generic. Therefore products fabric, colour and design may vary from images shown, Chelino reserves the right to alter products specifications

Instruction Manual

Congratulations on your purchase of the child seat .Please read this instruction manual carefully before use .If you have any questions concerning the use of this child seat , please do not hesitate to contact us.

⚠ WARNING: DO NOT place rear-facing child seat on front seat with airbag. DEATH OR SERIOUS INJURY can occur.

NOTICE

- 1.This is a “Universal” child restraint; it is approved to Regulation No.44,04 series of amendments, for general use in vehicles and it will fit most ,but not all, car seats.
- 2.A correct fit is likely if the vehicle manufacturer has declared in the vehicle handbook that the vehicle is capable of accepting a “Universal” child restraint for this age group.
- 3.This child restraint has been classified as “Universal” under more stringent conditions than those which applied to earlier designs which do not carry this notice.
- 4.If in doubt, consult either the child restraint manufacturer or the retailer.

Only suitable if the approved vehicles are fitted with 3-point safety-belts, approved to UN/ECE Regulation No.16 or other equivalent standards.

EXTREME HAZARD
Do not use in passenger seats equipped with airbags (SRS)

Caution

 Correct fitting/suitable  Incorrect fitting/not suitable





This child seat is suitable for conventional use in all cars equipped with 3 point seat belts that are fitted in accordance with European standard(ECE44or equivalent standard)

Important:

The child seat must only be installed using a lap and diagonal seat belt.



-  Not to be used on this seat if a passenger front airbag is active.
-  Only use on this seat if a lap and diagonal seat belt is fitted.

● Feature

1. This product is called Restraining devices for child occupants of power-driven vehicles, commonly known as the child seat. Product appearance streamlined bionic design, elegant appearance. Precision injection molding process, high strength, compact structure, solid. Cloth sets of flame retardance fabric, wear-resistant, soft, antibacterial, and there are a variety of colors.
2. The backrest of this product can be adjusted to 3 different incline positions, that is the child can sit or recline during the travel.
3. This product shoulder strap height With 3 adjustable shoulder strap height according to different height of the child
4. This child seat can only be used for children 0- 13kgs, installed in a rearward-facing or 9-36kgs in forward facing position.

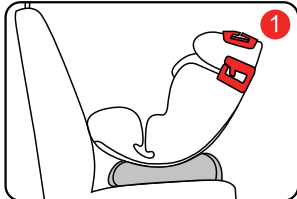
● Safety warning

For your child's safety, please read these instructions carefully before use and keep them for future reference. Failure to follow the instructions contained in this manual could result in serious injury to your child.

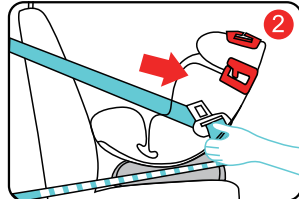
1. This child seat can only be used with the harness for children less than 18kg in weight (group 0+, 0-13kg; group 1, 9-18kg).
2. This child seat can be installed rearward-facing and forward-facing using a three-point lap and diagonal seat belt. Important - Do not use forward-facing before the child's weight exceeds 9kg.
3. This instruction manual can be retained in the special space of the child seat for its life period.
4. Do not use this child seat in the home. It has not been designed for home use and should only be used in your car.
5. It shall be recommended that children are not left in their child restraint system unattended.
6. Do not place rear-facing child seat on front seat with airbag. Death or serious injury can occur.
7. The child seat should be changed when it has been subject to violent stresses in an accident.
8. For the reason of safety, the child seat must be fixed inside the vehicle even if you do not put your child inside the child seat.
9. Always make sure that any straps holding the seat restraint to the vehicle shall be tight, any straps restraining the child should be adjusted to the child's body, and check that the straps shall not be twisted.
10. Ensuring that any lap straps is worn low down, so that the pelvis is firmly engaged, shall be stressed.
11. Do not use any load bearing contact points other than those described in the instructions and marked in the child restraint.

12. Any luggage or other objects liable to cause injuries in the event of a collision must be properly secured.
13. The rigid items and plastic parts of a child restraint must be so located and installed that they are not liable, during everyday use of the vehicle to become trapped by a moveable seat or in a door of the vehicle.
14. Your child should always be strapped into the seat.
15. It is dangerous to make any alteration or additions to the device without the approval of the competent authority, and a danger of not following closely the installation instructions provided by the child restraint manufacturer.
16. This child seat is designed for children from birth up to 36 kg. Never overload the child seat more than one child or with other loads.
17. The child restraint must not be used without the cover.
18. The seat cover should not be replaced with any other than the one recommended by the manufacturer, because the cover constitutes an integral part of the restraint performance.
19. Before you adjust any movable or adjustable parts of your child seat, you must remove your baby from the child seat.
20. The child seat should be kept away from sunlight if the seat is not provided with a textile, otherwise it may be too hot for the child's skin.
21. Never use a second-hand product, as you can never be certain what was happened to it.

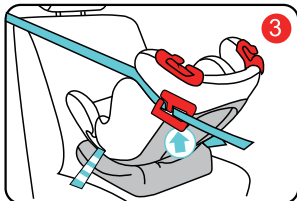
Group 0+ (0-13kgs) installation.



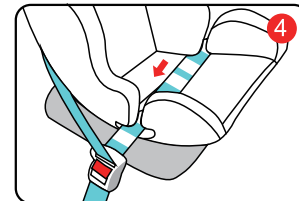
1. Place the infant seat in the rearward facing direction on the vehicle seat.



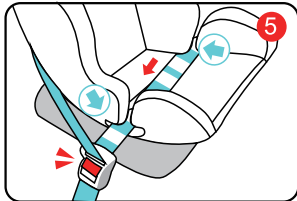
2. Extend the vehicle's three-point safety belt to its maximum.



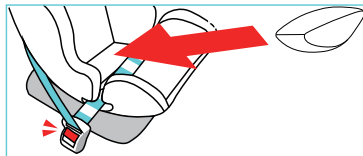
3. The shoulder belt warps around the seat and slots through the guides as shown in the picture.



4. The lap belt goes through the bottom of the seat as shown in the picture.



5. Thread the safety belt through the seat belt guide on both sides of the seat and buckle up.



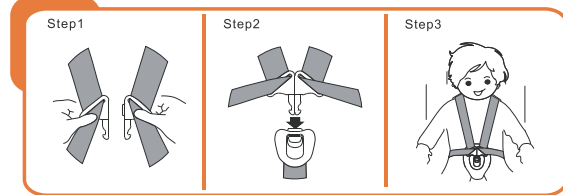
Note: „For confort and safety, please use the soft sponge cushion that comes with this product if your child as a new born baby How to use the sponge cushion: When the seat is bound, place the sponge cushion at the bottom of the seat.

Checking the shoulder strap height



Always check that the shoulder straps are at the correct height for your child. The child's shoulders should always be thread through the slots in the cover and seat shell that are closest to the top of your child's shoulders.

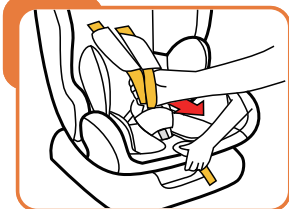
Usage of buckle



Firstly ,adjust the shoulder straps height ,please proceed as follows:
 Step1. Put the two metal sections of the buckle connector together.
 Step2. Slot the two buckle connectors into the slot in the buckle until they “click” place.
 Step3. Check the harness is correctly locked by pulling the shoulder straps upwards.
 To release the harness ,you can press the red button of the buckle downwards, the two metal sections will be pop up .

Adjust and use the harness

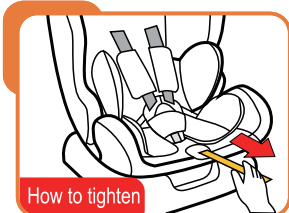
Loosen the harness



The harness is slackened by pressing the adjuster (under the adjuster cover) on the front of the seat.

Press down the adjuster as you grip the two shoulder straps with your other hand. Pull the shoulder straps towards you to loosen the harness.

Tighten the harness



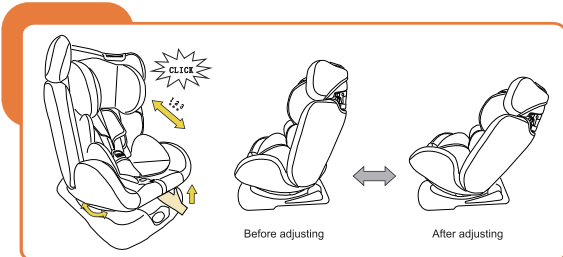
How to tighten

Pull the shoulder straps upwards to remove the slack from the lap sections of the harness then pull the adjuster strap until the harness is fully tightened.

The harness should be adjusted as tightly as possible without causing discomfort to your child.

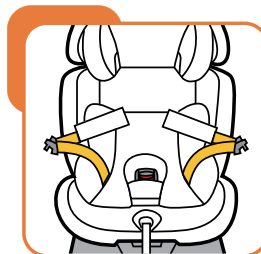
A loose harness can be dangerous. Check the harness adjuster and tighten each time the child is placed in the seat.

Adjust the child seat to different incline positions

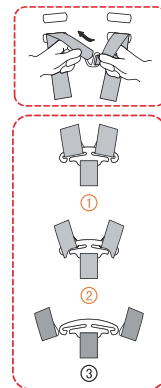


Adjust the shoulder strap height

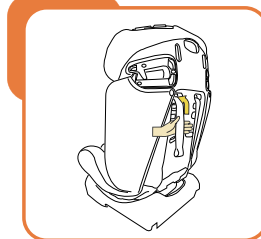
If the height of your shoulder belts in child car seat is not fit for your child, Adjust the height of the shoulder belt ,please proceed as follows:



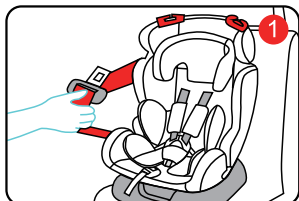
Step1. Loosen the shoulder harness (see point 4. 4) turn the child seat to the back. Slide the chest straps and shoulder straps off the harness connectors.



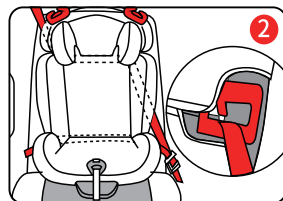
Step2. Pull the straps through the shoulder strap slots from the front of the child seat. Now you can remove the shoulder straps and chest pad.



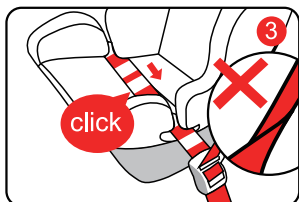
Group I (9-18kgs) installation



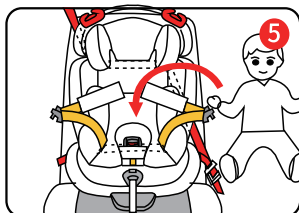
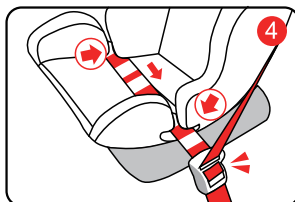
1. Place the infant seat in the forward-facing direction on the vehicle seat, extend the vehicle's three-point safety belt to its maximum.



2. Thread the shoulder belt through seat belt guides on the seat without obstructing the movement of the headrest.



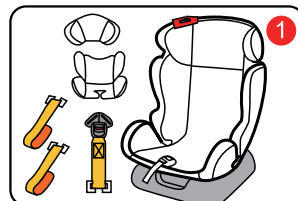
3. The lap belt goes through the bottom of the seat as shown in the picture. (see fig. 3 & 4)



4. Unbuckle and loosen the infant seat's harness, move the belts out of the way and create a jacket style environment in order to put baby into the seat and strapping baby up. (see fig. 5 & 6)



Group II (15-25kgs) installation



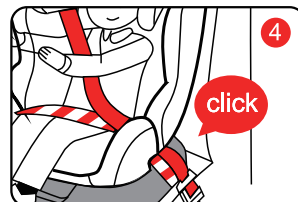
1. Disassemble the infant seat safety harness and remove the seat pad. Adjust the seat to the upright position and place the infant seat in the forward-facing direction on the vehicle's seat.



2. Extend the vehicle's three-point safety belt to its maximum. Thread the shoulder belt through seat guides and through the seat without obstructing the



movement of the headrest. The lap belt goes over the child's lap as shown in the picture. (see fig. 2 & 3)



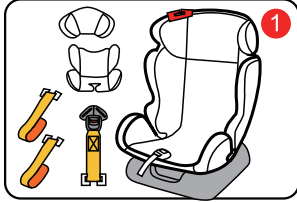
3. Fasten the seat belt latch till the "click" sound and then tighten the seat belt. (see fig. 4 & 5)



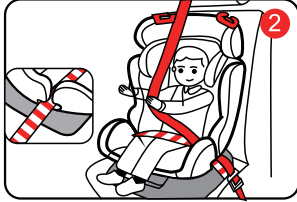
4. Ensure that none of the seat belts are twisted.

Attention: please choose the safety belt guide slot or seat belt guide slot according to the actual child's shoulder height.

Group III (22-36kgs) installation .



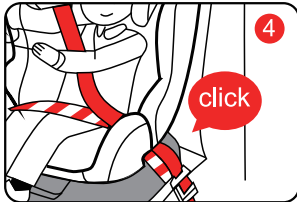
1. Disassemble the infant seat safety harness and remove the seat pad. Adjust the seat to the upright position and place the infant seat in the forward-facing direction on the vehicles seat.



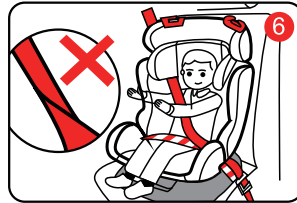
2. Extend the vehicles three-point safety belt to its maximum. Thread the shoulder belt through seat guides and through the seat without obstructing



the movement of the headrest. The lap belt goes over the child's lap as shown in the picture.(see fig. 2 & 3)

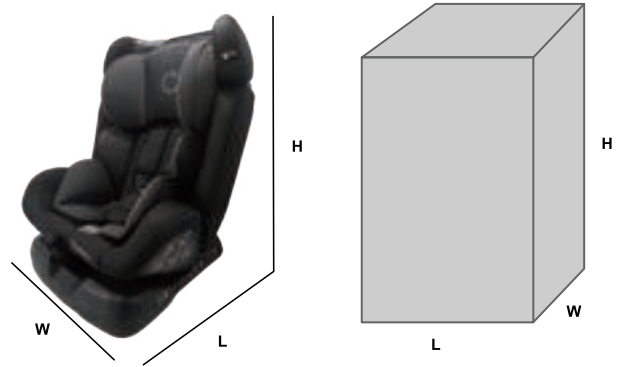


3. Fasten the seat belt latch till the "click" sound and then tighten the seat belt.(see fig. 4 & 5)



4. Ensure that none of the seat belts are twisted.

Dimension Info



LENGTH	49 CM	CARTON LENGTH	46.5 CM
WIDTH	46.5 CM	CARTON WIDTH	44.5 CM
HEIGHT	63 CM	CARTON HEIGHT	88 CM
WEIGHT	5.95 KGS		