

Baby stroller



COCOON
IMPORTANT – READ CAREFULLY AND
KEEP FOR FUTURE REFERENCE

Hot Mom

Product name: Cocoon Stroller
Model number: 5731133
Material: Pu leather, Aluminum tube, Bayer plastic
Standard: EN 1889-1:2018 EU standard, ASTM F833-15 American standard
Importer:
Anchor International
Add: 12 Kimberlie Road, Theta Exit 5 Booyens Reserve,
JHB 2091 South Africa.
Tel: +27 11 8352520
Info: info@cheiloptalium.co.za

CATALOGUE

1.Component Description.....1-3
2.Usage Pattern of the Seat/Carrycot.....4
3.Steps to Open the Frame.....5
4.Steps to Fold the Frame.....6
5.Installation and Disassembly of Rear Wheels.....7
6.Installation and Disassembly of Front Wheels.....7
7.Installation and Disassembly of Seat/Carrycot.....8
8.Installation and Disassembly of the Bump bar.....8
9.Installation and Disassembly of the Canopy.....9
10.Usage of the Wrist Strap.....9
11.Steps to install and usage of the safty Buckle.....10
12.Installation and Disassembly of the Canopy Cloth.....11
13.Installation and Folding of the Carrycot.....12

14.Installation of the Carrycot Cover.....12
15.Installation and Disassembly of the shopping basket.....12
16.Installation of the Mosquito Net.....13
17.Installation of the Rain Cover.....13
18.Handle bar height Adjustment Function.....14
19.Seat angle Adjustment Function.....14
20.Seat/Carrycot height Adjustment Function.....14
21.Seat Reversing Function.....15
22.Orientation Function of Front Wheels.....15
23.Regulating Function of the Brake.....15
24.WARNING.....16-18
25.Maintenance.....19

Component Description



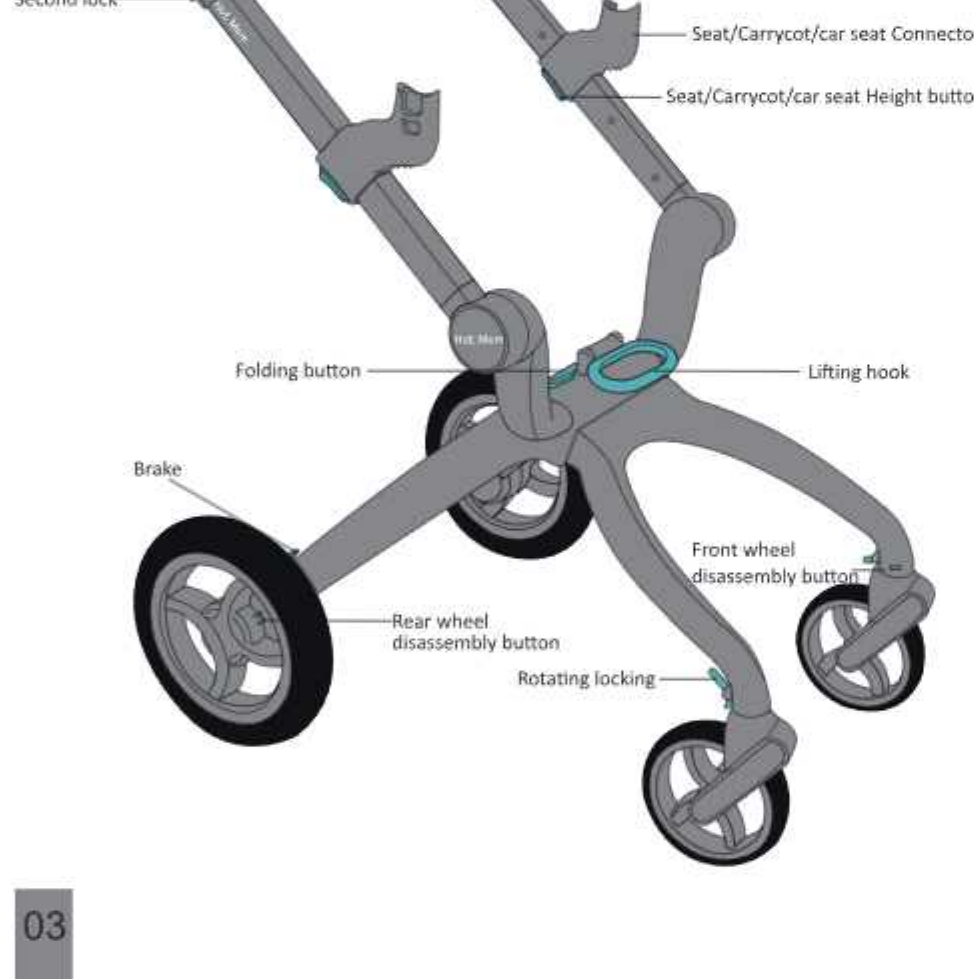
01

Component Description



02

Component Description



03

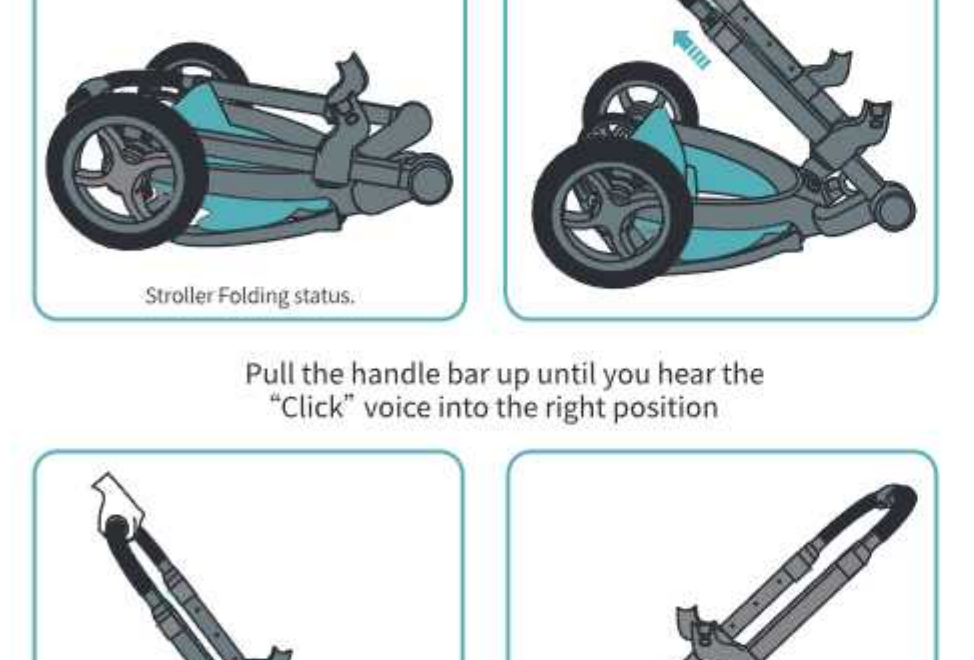
Usage Pattern of the Seat/Carrycot

- Figure 1 is to match the seat usage pattern.
- Figure 2 is to match the Carrycot usage pattern.



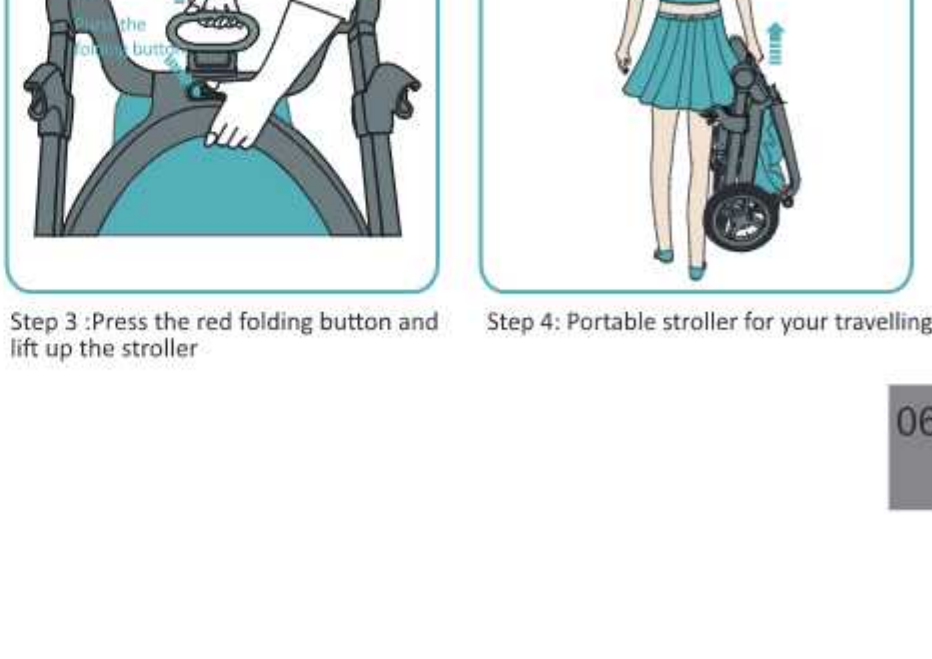
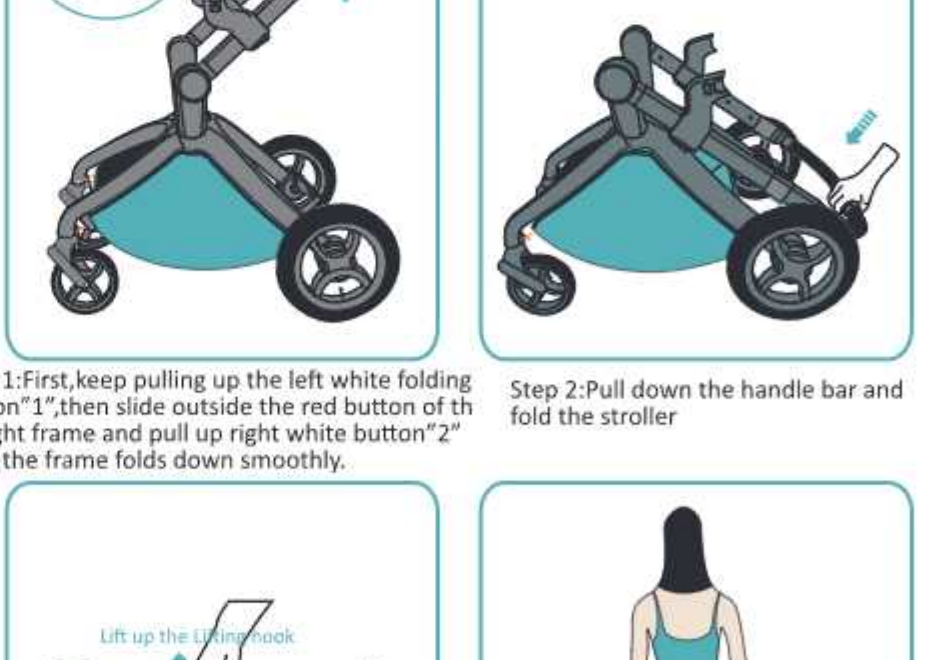
04

Steps to Open the Frame



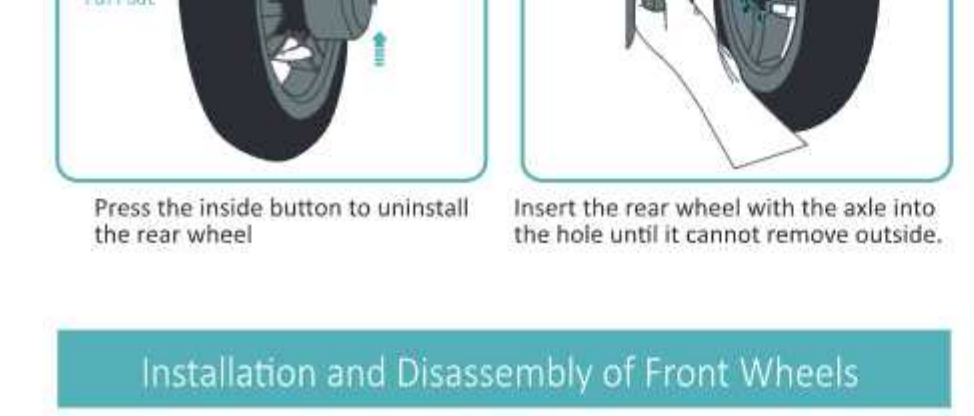
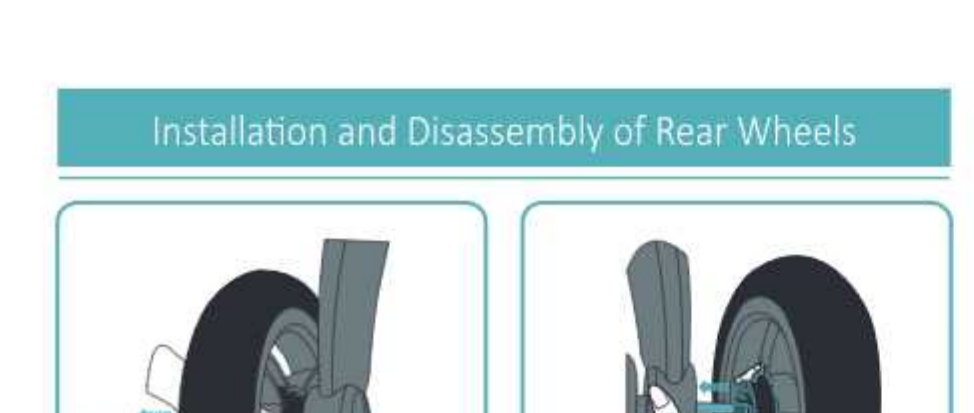
05

Steps to Fold the Frame



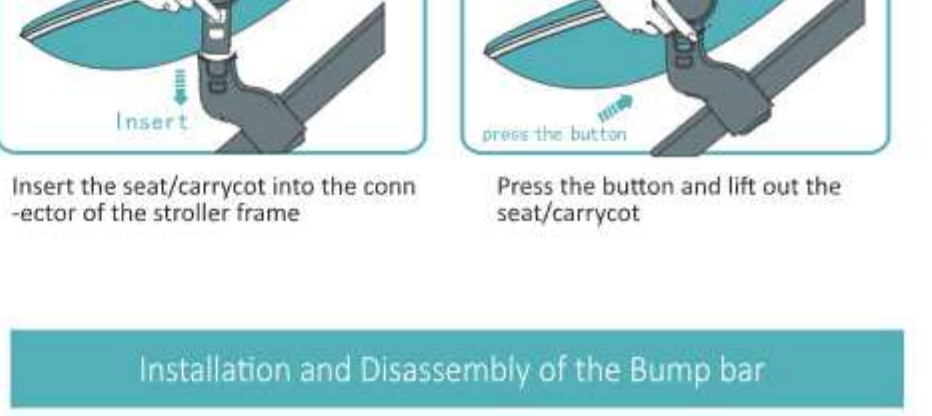
06

Installation and Disassembly of Rear Wheels



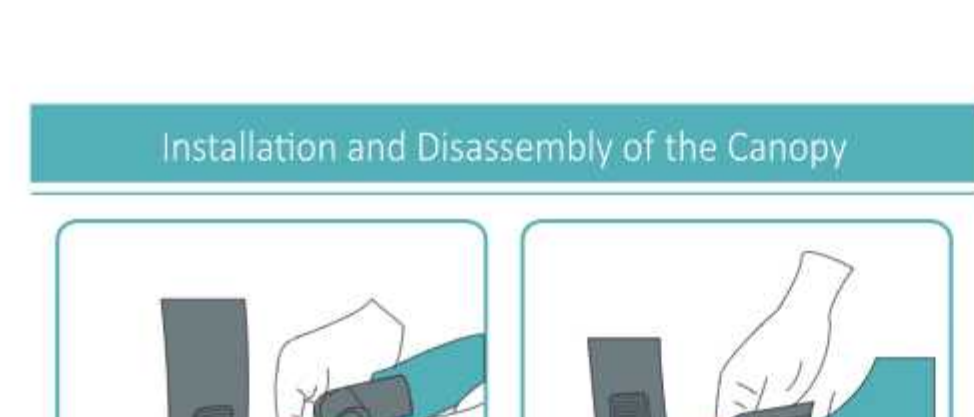
07

Installation and Disassembly of Seat/Carrycot



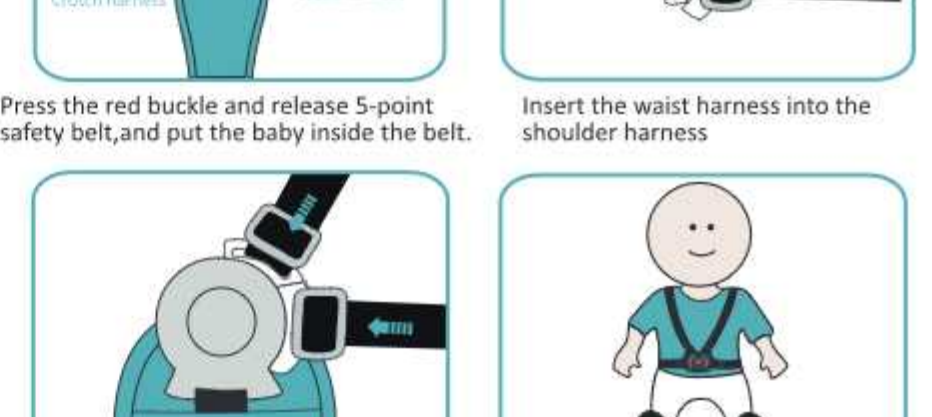
08

Installation and Disassembly of the Canopy



09

Steps to install and usage of the safty Buckle



10

Usage of the Wrist Strap



09

Installation and Disassembly of the Canopy Cloth



11

Installation of the Carrycot Cover



12

Installation of the Mosquito Net



13

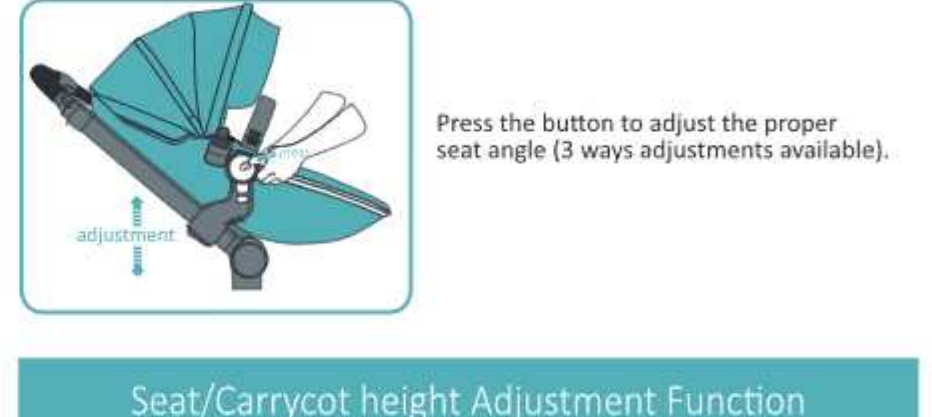
Handle bar height Adjustment Function



Seat angle Adjustment Function



Seat/Carrycot height Adjustment Function



14

WARNING:

- IMPORTANT – READ CAREFULLY AND KEEP FOR FUTURE REFERENCE.
- WARNING! The carrycot/bassinnet is suitable for infants from birth to 6 months, max. weight 9KG (19.8lbs).
 - WARNING! The stroller seat is intended for children up to 6 months, max. weight 15KG (33lbs).
 - WARNING! The max. weight of the shopping basket is 2.5KG (5.5lbs).
 - WARNING! Never leave the child unattended.
 - WARNING! Ensure that all the locking devices are engaged before use.
 - WARNING! Do not carry extra children or bags on this pram/stroller.
 - WARNING! To avoid injury ensure that the child is kept away from unfolding and folding this product.
 - WARNING! Do not let the child play with this product.
 - WARNING! This seat unit is not suitable for children under 6 months
 - WARNING! Always use the restraint system.
 - WARNING! No additional mattress shall be added.
 - WARNING! This product is not suitable for running or skating.
 - WARNING! Always apply the brakes whenever the pram/stroller is stationary.
 - WARNING! Ensure the child in the harness at all times.
 - WARNING! Do not carry extra children or bags on this pram/stroller.
 - Never allow additional children to ride on the stroller at any time. The vehicle's design for use on flat or gently sloping surfaces and may be unstable on higher sloping and uneven surfaces and user should be made aware of the possibility of the vehicle tipping over. Illustrations or diagrams may be used to demonstrate the hazard.
 - Ensure that the parking device of the stroller is fully locked before placing and removing the children.
 - Avoid lifting or use escalators or stairs when the child is sitting in the stroller.
 - Only replacement parts supplied or recommended by the manufacturer or distributor shall be used. Accessories which are not approved by the manufacturer shall not be used.
 - Do not make any changes to this product.
 - Keep all plastic packaging and materials out of the reach of children.
 - Seat unit adaptor should be installed correctly and securely locked before use.
 - The safety harness should be checked on a regular basis to ensure that the webbing has not become frayed or damaged. In the event of damage, it is recommended that you purchase a new harness.

16

WARNING:

- The harness should be correctly adjusted to provide a snug fit around your child. Adjust using the buckles on the shoulder, waist and crotch straps.
- Ensure that the brakes are correctly engaged.
- The stroller should not be left for any reason. Even if only for a short time on a flat surface.
- Ensure that your baby is comfortable and does not overheat when using the rain cover. The mesh ventilation panels on the sides of the rain cover are essential to aid the flow of cool air around your baby. The top section should be opened or the rain cover removed unless it is raining or very cold.
- Your child should be clear of moving parts before adjusting the position of the backrest, footrest or canopy.
- Care should be adopted when moving the stroller up and down curbs and steps etc. and influence the use of the product or generate dangers.
- When you stand at the directly in front of the stroller, the seat/bassinnet's armrest (bump bar) is installed. The bassinnet only use to baby rest, can't lift to use.
- Do not let other children play unattended near the carrycot or seat. The seat unit is only to be used with the chassis of the stomp.
- Never use the carrycot on an elevated surface.
- Never use the carrycot as a means for transporting your child in a motor vehicle.
- The handles and the bottom of the carrycot should be inspected regularly for signs of damage and wear.
- Before carrying or lifting, make sure that the handle (s) is (are) in the correct position of use.

17

WARNING:

- Only F22 carrycot and seat unit is used and matched with the F22 chassis.
- The mattress shall be less than 10mm recommended by the manufacturer. No additional mattress shall be added.
- Any load attached to the handle bar or on the back of the backrest or on the sides of the stroller will affect the stability of the stroller.
- Never carry more than one child in the stroller at a time.
- The carrycot shall not be used as soon as the child is able to sit by himself, roll over and cannot push itself up on its hands and knees. Maximum weight of the child: 9 kg

18

Maintenance

- Before use every time, it is needed to check if all kinds of components (screws, rivets) are firm and perfect, spare parts or seat cloth are damaged. They should be checked and repaired periodically for your baby's safety. And in case of abnormality, please stop use immediately.
- Prevent it from using or keeping in a moist, cold or high-temperature environment, otherwise it is easy to make the parts being rusted or aged, etc. and influence the use of the product or generate dangers.
- Cleaning of cushion: remove the fixed ribbon belt and four buckles, wash it in warm water by hand and dry it in air without blazing sunshine for quite a long time.
- In cleaning the frame, you shall not use bleaching agent. Please avoid hardware parts contacting with water, so as not to rust and affect the life of the product.
- Often push the stroller, and go for maintenance in case of any problem.
- Please avoid excessive blazing sunshine for quite a long time, otherwise it will promote the aging of the parts and the discoloration of the cloth.
- All rotating parts (such as wheel joints, etc.) shall not be injected by viscous lubricating oil but a small amount of dilute lubricants, so that lubricating oil can be prevented from adhering to impurities resulting in the impact of rotation.

19

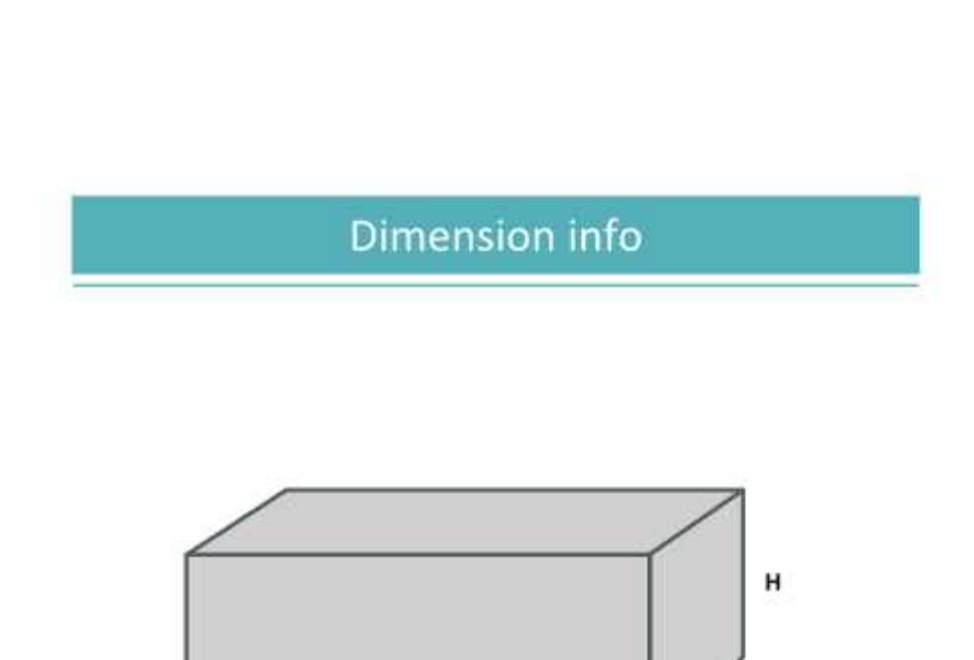
Dimension info



LENGTH	66 CM	CARRY COT LENGTH	87 CM
WIDTH	64 CM	CARRY COT WIDTH	38 CM
HEIGHT	118 CM	CARRY COT HEIGHT	47 CM
WEIGHT	10 KGS	CARRY COT WEIGHT	3.46 KGS

20

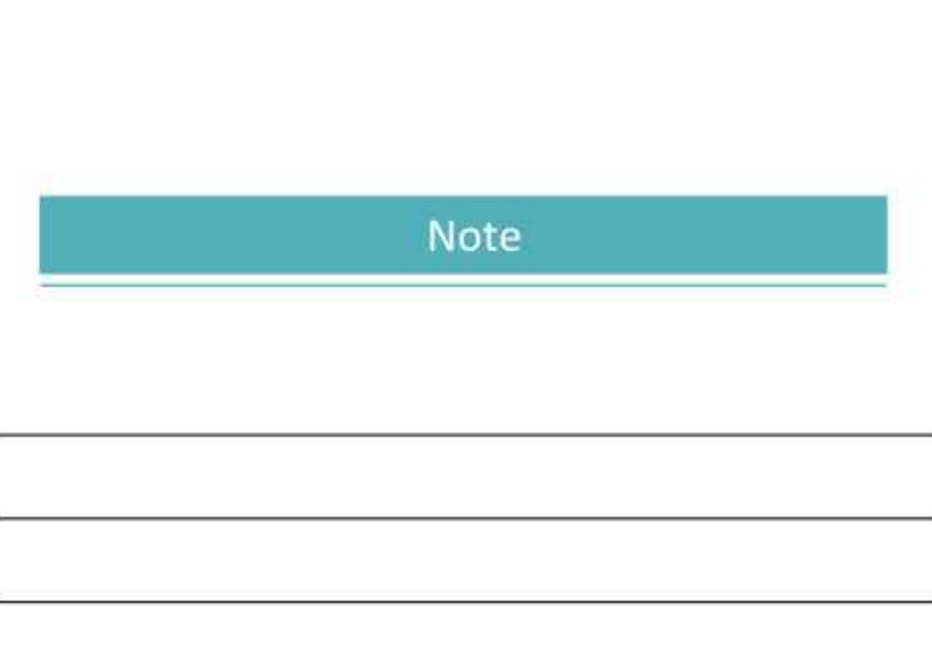
Dimension info



CARTON LENGTH	89 CM
CARTON WIDTH	56 CM
CARTON HEIGHT	42 CM

23

Note



24