



Stores: ChelinoBaby – Ormonde - JHB  
ChelinoBaby – Fourways – JHB  
ChelinoBaby – Menlyn – Pretoria  
ChelinoBaby – Gateway - Durban  
ChelinoBaby – Online – [www.chelinobaby.co.za](http://www.chelinobaby.co.za)



Importer:  
Anchor International  
Add: 12 Kimberlite Road , Theta Ext 5 Booyens Reserve , JHB  
2091 South Africa.  
Tel: +2711 8352520  
Info: [info@chelino.co.za](mailto:info@chelino.co.za)

The Chelino logo, consisting of the word "Chelino" in a bold, red, sans-serif font, followed by a red circular icon containing a stylized white face with a single eye and a smile.

## CODI INFANT SEAT INSTRUCTION MANUAL



**GROUP 0+**

SUITABLE FOR CHILDREN  
FROM 0 TO 13 KG

### NOTICE

1. This is a "Universal" child restraint. It is approved to Regulation NO.44.04 series of amendments, for general use in vehicles and it will fit most, but not all, car seats.
2. A correct fit is likely if the vehicle manufacturer has declared in the vehicle handbook that the vehicle is capable of accepting a "Universal" child restraint for this age group.
3. This child restraint has been classified as "Universal" under more stringent conditions than those which applied to earlier designs which do not carry this notice.
4. If in doubt, consult either the child restraint manufacturer or the retailer.

Only suitable if the vehicle is fitted with 3-point safety belts. Approved to UN/ECE Regulation No. 16 or other equivalent standards.

## Contents

<b>1. Vital information-READ NOW.....</b>	<b>2-3</b>
<b>2. Parts and interior equipment.....</b>	<b>4</b>
<b>3. Use in the vehicle.....</b>	<b>5</b>
<b>4. Securing your baby.....</b>	<b>6-10</b>
4.1 Removing the lying support.....	6-7
4.2 Adjusting the handle.....	7
4.3 Adjusting the shoulder belt height.....	8
4.4 Loosening the shoulder straps.....	8
4.5 Securing your baby using the harness.....	8-9
4.6 Tightening the harness.....	9
4.7 Checklist to ensure that your baby is buckled up correctly.....	10
<b>5. Installation in the vehicle.....</b>	<b>10-13</b>
5.1 Securing the baby seat in your vehicle.....	10-12
5.2 Checklist for the correct installation of the baby seat in your car.....	12-13
<b>6. Fitting the sunroof.....</b>	<b>13</b>
<b>7. Care instructions.....</b>	<b>14-16</b>
7.1 Care for the harness buckle.....	14-15
7.2 Removing the harness.....	15
7.3 Removing the cover.....	15
7.4 Re-fitting the cover.....	15
7.5 Installing the harness.....	16
8. Instructions for use of cushion.....	16
<b>9. How to dispose.....</b>	<b>17</b>
<b>10. Washing instruction.....</b>	<b>17</b>

## 1. Vital information-READ NOW

- 1.The customer can write to the address printed on the box to obtain future information on fitting the child restraint in specific cars.
- 2.The rigid items and plastic parts of a child restraint must be so located and installed that they are not liable, during everyday use of the vehicle to become trapped by a movable seat or in a door of the vehicle.
- 3.Any straps holding the restraint to the vehicle should be tight; that any straps restraining the child should be adjusted to the child's body; and that straps should not be twisted.
- 4.The instructions can be retained on the child restraint for its life period.
- 5.Do not use any load bearing contact points other than those described in the instructions and marked in the child restraint.
- 6.Any lap strap is worn low down, and the pelvis must be firmly engaged shall be stressed.
- 7.The device should be changed when it has been subject to violent stresses in an accident.
- 8.It is dangerous to make any alterations or additions to the device without the approval of the competent authority, and a danger of not following closely the installation instructions provided by the child restraint manufacturer.

9.When the chair is not provided with a textile cover, it should be kept away from sunlight, otherwise it may be too hot for the child's skin.

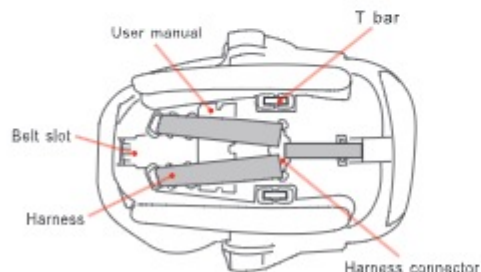
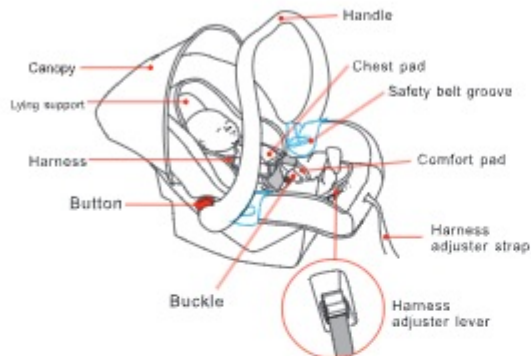
10.Children must not be left in their child restraint system unattended.

11.Any luggage or other objects liable to cause injuries in the event of a collision shall be properly secured.

12.The child restraint must not be used without the cover.

13.The seat cover can not be replaced with any other than the one recommended by the manufacturer, because the cover constitutes an integral part of the restraint performance.

## 2. Parts and interior equipment



## 3. Use in the vehicle

Child Safety Seat	Test and certification to ECE R44/04	
	Group	Body weight
BABY-CARRIER	0+	To 13kg



**Danger!** An airbag hitting the baby seat can cause serious injuries to your child, possibly resulting in death.

**DO NOT use on a passenger seat with a front airbag**

Please observe the instruction in your vehicle manual for the use of child seats.

**This is how you can use your child safety seat:**

Forward facing	no
Rearward facing	yes
With 2 point belt	no <sup>1)</sup>
With 3 point belt <sup>2)</sup>	yes
On front passenger seat	no <sup>3)</sup>
On outer rear seat	yes
On centre rear seat	no <sup>4)</sup>

(Please observe the relevant regulations in your country)

1) The use of a point belt substantially increases the risk of injury to your child in the event of an accident



2) The safety belt must be approved to ECE R16 or a comparable standard (see test label on belt with an "E" or "e" in a circle)

3) Car seat is not recommended to use at the front passenger seat unless there is no air bag in the front and no back seat can be used.

4) Can be used if the vehicle seat is equipped with a 3 point belt,

Center rear seat with 3-point belt is best for installing your baby seat because it can supply the space for crash cushion, the second better option is rear seat.

5)Never leave your baby unattended in the baby seat when placing it on elevated surfaces.

## 4. Securing your baby

### For the protection of your baby



Always secure your baby in the baby seat using the seat belt.

Never leave your baby unattended in the baby seat when placing it on elevated surfaces

(e.g. a table, nappy changing unit, etc.)

Never allow the strap end to become caught in moving parts (e.g. Automatic doors, escalators, etc.).

1). Caution! The plastic parts of the baby seat heat up in the sun, so that your baby may get burnt. Protect your baby and the baby seat against intensive solar radiation (e.g. by putting a light cloth over the seat).

2). The baby seat requires only one seating position in the car. This advantage means, however, that your baby must be in a semi-reclined position.

3). Take your baby out of the baby seat as often as possible to relieve its spine. We recommend frequent breaks during long journeys. Even outside of the car, please avoid leaving your baby in the baby seat for too long.

### 4.1 Removing the lying support

The lying support is used to provide extra comfort for very small babies.

**Caution!** Only use the lying support when the shoulder belt is in the lowest slot position

Slide shoulder belt out of 3 bar on the back of the carrier.



Take out the belt, you can remove the lying support.

Then put belt through upper another slot and slide straps in 3 bar.



### 4.2 Adjusting the handle

You can engage the handle in four positions:

Simultaneously press both buttons on the handle. Then whilst holding the buttons pressed turn the handle backwards or forwards until it engages in the desired position.



A: For carrying and for transport in the car



B: For placing your baby into the baby seat



C: For setting the baby down safely outside the car seat

### 4.3 Adjusting the shoulder belt height

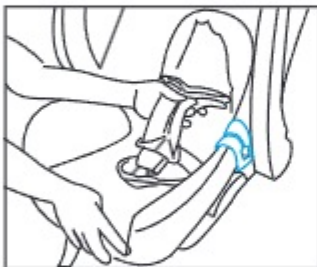
**A correctly adjusted shoulder belt height ensures your baby's optimal protection in the baby seat.**

The shoulder belt height must be adjusted so that the shoulder straps are at the same level as your baby's shoulders or slightly below.

Follow paragraph 4.1.

### 4.4 Loosening the shoulder straps

Press the adjuster button under the cover and at the same time pull both shoulder straps forward.



### 4.5 Securing your baby using the harness

Loosening the shoulder straps. (See 4.4)

Open the harness buckle (press the red release button). Put the tongue with belt on the both side, the buckle is placed to front so that the occupant place is free.

Place your baby into the baby seat.

Put the shoulder straps over the shoulders of your baby.

**Caution!** Do not twist or interchange the shoulder straps. Put the two buckle tongues together and engage in the harness buckle with an audible **CLICK!**



Tighten the straps until they are in contact with your baby's body. (See 4.6)

**Caution!** The hip belt must lie as possible over your baby's hips.

### Removal

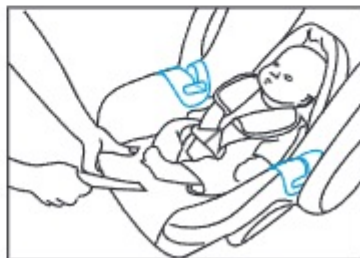
Press the side red button of harness to release five point harness. then put the tongue in the both side, take out your baby.

### 4.6 Tightening the harness

Pull the strap end.

**Caution!** Pull the strap end straight towards you, not upwards or downwards.

Please pay attention to the strap end while travelling (especially outside the car); it should always be placed in the carrier.





#### 4.7 Checklist to ensure that your baby is buckled up correctly



**For the safety of your baby, please check that...**

The shoulder straps of the baby seat are close to the body

Without constricting the baby

The shoulder straps are adjusted correctly.

The shoulder straps are not twisted.

The buckle tongues are engaged in the harness buckle.

### 5. Installation in the vehicle



Please do not leave your child unattended in the child safety seat in the vehicle.

#### For the protection of all vehicle occupants



In the case of an emergency stop or an accident unsecured persons or objects may cause injury to other vehicle occupants.

Please always check that:

\*The backrests of the vehicle seats are locked (i.e. that a foldable rear seat bench latch is engaged).

\*All heavy or sharp-edged objects in the vehicle (e.g. on the parcel shelf) are secured.

\*All persons in the vehicle have their seat belts fastened

\*The child safety seat is always secured when it is in the vehicle, even if no child is being transported.

#### To protect your vehicle

\*Some vehicle seat covers of sensitive materials (e.g. velvet, leather, etc.) may develop wear marks when child seats are used. This can be avoided by placing a blanket or towel under the child seat.

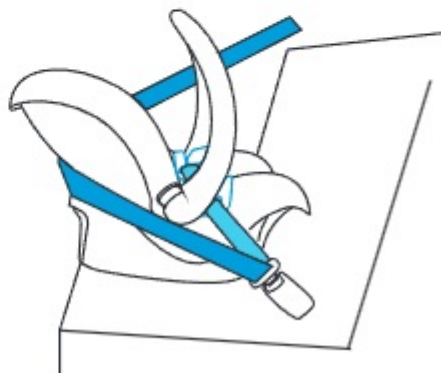
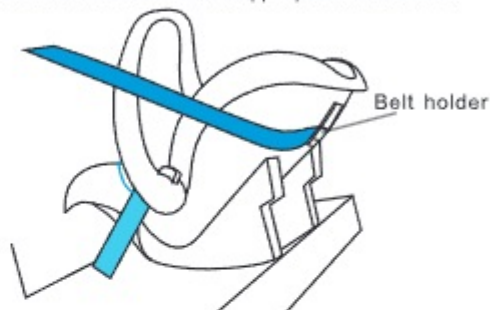
#### 5.1 Securing the baby seat in your vehicle

To secure the baby seat using the 3-point belt of your vehicle proceed as follows:

Place the baby seat rearward-facing on the vehicle seat (baby is facing backwards)

**Tip!** In certain cases it is possible that the baby seat does not rest securely or is inclined too steeply on the vehicle seat. This can be remedied by placing a blanket under the child seat or choosing another seating position.

Ensure that the handle is in its upper position A, as below



**Caution!** Do not twist the belt.  
Tighten up the diagonal belt section.

#### Removal

Slide diagonal belt out from belt holder slot to unhook diagonal belt section

Open the vehicle seat buckle and take the lap belt section out of the blue belt guides.

### 5.2 Checklist for the correct installation of the baby seat in your car

For the safety of your baby, please check that

- \*The baby seat is installed rearward-facing.
- \*The baby seat is only installed on the front passenger seat if no front airbag can strike the baby seat,
- \*The baby seat is only secured using a 3-point belt,
- \*The diagonal belt section runs through the blue belt holder and the baby seat.
- \*The vehicle seat buckle or belt is not positioned in or in front of lap belt holder,
- \*The vehicle seat belt is tightened up and not twisted.



Wrong



Right

\*The lap belt section runs through both blue belt guides on the baby seat, lie in the flat on both sides, see the picture



Wrong



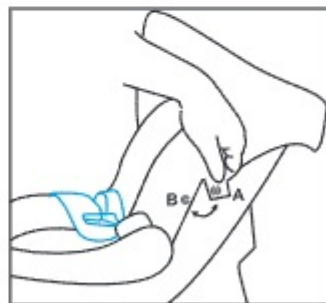
Right

\*Don't use any load bearing other than these described in the Instructions.

\*If you have any further questions relative to the main load bearing, please feel free to contact local retailer.

## 6. Fitting the sunroof

Push fastener (A) of the canopy onto the other fastener (B).





## 7. Care instructions



### To retain the protective effect

In an accident at a collision speed above 10 km/h the child seat could suffer damage which is not necessarily obvious.

In this case, the child seat must be inspected by the manufacturer and if necessary replaced.

Regularly check all important parts for damage. Ensure the correct operation of all mechanical components.

To prevent damage or breakage, ensure that the child seat does not become jammed in the car door, seat runners, etc.

Should the child seat be damaged (for example after dropping it) it must be inspected by the manufacturer.

### 7.1 Care for the harness buckle

The function of the harness buckle is important for the safety of your child.

Malfunctions of the harness buckle are mostly attributable to accumulations of dirt and dust.

#### Malfunction

The buckle tongues are ejected only slowly when the red release button is pressed.

The buckle tongues will no longer lock home (are ejected again).

The buckle tongues engage without an audible "click".

The buckle tongues are difficult to insert (you feel resistance).

The buckle only opens if extreme force is applied.

#### Remedy

Wash out the harness buckle so that it functions properly once again:

##### 1) Removing the harness buckle

Open the harness buckle (press the red release button).

Loosen the harness straps (see 4.4).

Tilt the baby seat backwards

Push T bar, with which the harness buckle is fixed to the seat shell, on its side upwards through the belt slot.



### 2) Cleaning the harness buckle

Soak the buckle in warm water with dishwashing for at least an hour.

Rinse and dry thoroughly.

### 3) Re-fitting the harness buckle

Push the metal plate on its side downwards through the belt slot in the cover and through the seat shell.

Check for correct fitting by pulling firmly on the harness buckle.



### 7.2 Removing the harness

Unhook the shoulder straps as described above (see 4.1).

Pull out T bar which is used to fasten the strap to the bottom of the carrier shell (see 7.1). Total three piece of T bar.

Push the strap loop inwards from the short side of T bar and unhook the strap.

You can now pull the strap out.

### 7.3 Removing the cover

Open the harness buckle (press the red release button).

Unhook the shoulder straps from the connecting piece (see 4.1)

Take the plastic buttons off the seat.

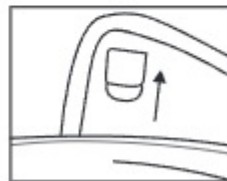
Pull the shoulder straps out of the belt slots of the baby shell.

Pull out the straps and the buckle tongues from the cover.

Pull out the harness buckle from the cover.

Take off the shoulder pads.

You can now remove and the cover.



### 7.4 Re-fitting the cover

Put the cover over the seat as paragraph 1.2 pictures.

### 7.5 Installing the harness

Engage the buckle tongues in the harness buckle (see 4.5).  
Re-fitting the buckle (see 7.1)

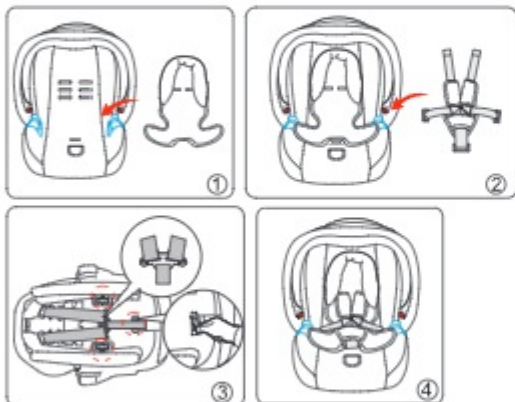
Now take the strap through the two slots of the baby shell.

**Caution:** Do not twist the belts.

Hook T bar into the strap loop (first the long side and then the short side of the T bar)

Hook the shoulder straps into place as described above

## 8. Instructions for use of cushion



**NOTICE:** Please use cushion for the child less than 11kgs  
Put cushion in child restraint system, and then adjust harness  
and cushion following the picture

## 9. How to dispose

- Please observe the waste treatment of the country.
- Please put the returnable plastics and mental parts into a corresponding returnable container.

## 10. Washing instructions

Use the original seat cover only and the non-original Cover will affect its function

Do not use the child safety seat without seat cover.

● Use only water (under temperature of 30) with neutral detergent to wash the cover. Hang it in the shade after washing and do not wash by machine. Spindry or tumbledry is not recommended.

● Wash the plastic parts with warm water and neutral soap. Do not wash with chemicals. I

Cover: Polyester fibre 100%  
Filling: polyurethane 100%



Maximum  
temperature  
of 30°C



Never use  
chlorine  
bleaches



Do not  
tumble dry



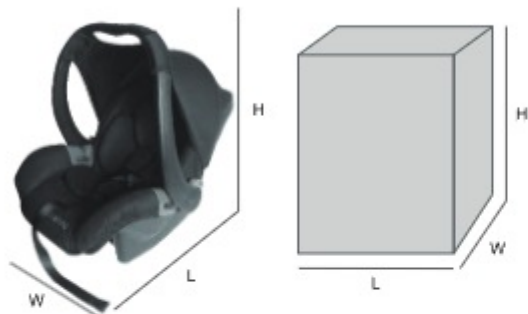
Do not  
wring



Never iron

Due to variation on the styles and designs of our products, the photographs and illustrations shown in this manual are generic. Therefore products fabric, colour and design may vary from images shown. Chelino reserves the right to alter products specifications

## 11 . Dimension info



LENGTH	70 CM	CARTON LENGTH	71 CM
WIDTH	43 CM	CARTON WIDTH	44,5 CM
HEIGHT	58,5 CM	CARTON HEIGHT	83 CM

WEIGHT KGS

## 12 .Note

[illegible]

A rectangular box with a thin black border, containing 18 horizontal lines for writing. The lines are evenly spaced and extend across most of the width of the box.A rectangular box with a thin black border, containing 18 horizontal lines for writing. The lines are evenly spaced and extend across most of the width of the box.