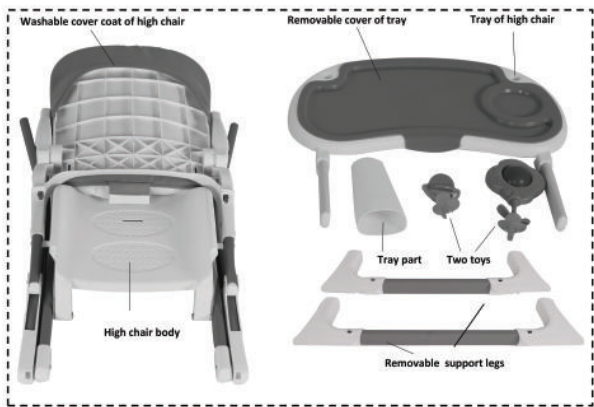
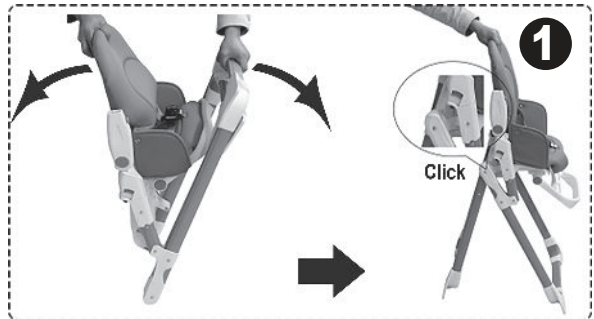


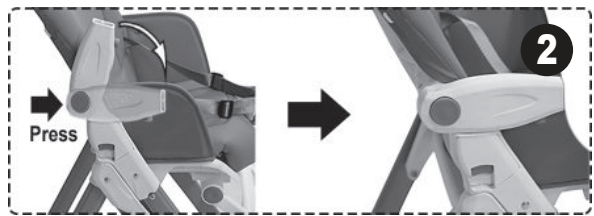
The method to open



Open box and take out all parts of high chair. (High chair body, washable fabric cover of high chair, removable plastic cover of tray, tray of high chair, tray part and two toys.)

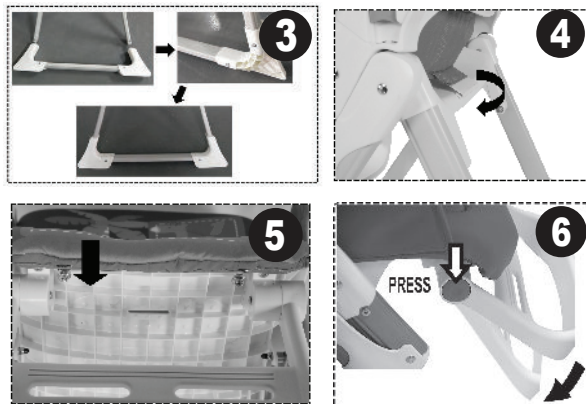


Open high chair as figure 1.

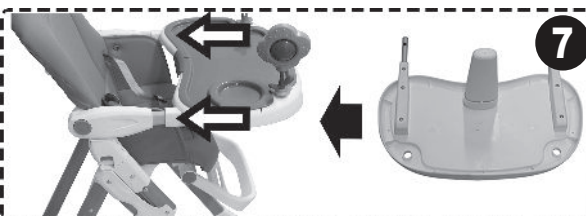


Press this button and rotate handrail as figure 2.

1

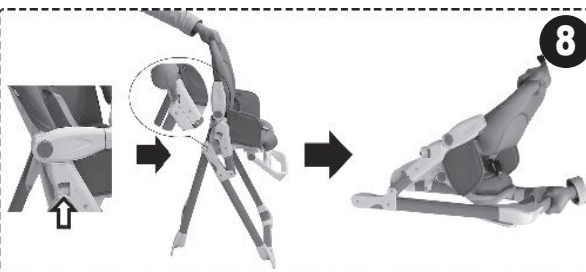


Press the spring clip and insert the tube until the spring clip extends out as figure 3. Hook this plastic on bottom of the seat as figure 4. Buckle this button on bottom of the seat as figure 5. Press this button and adjust footboard as figure 6.



Connect tray (A) with high chair handrail as figure 7.

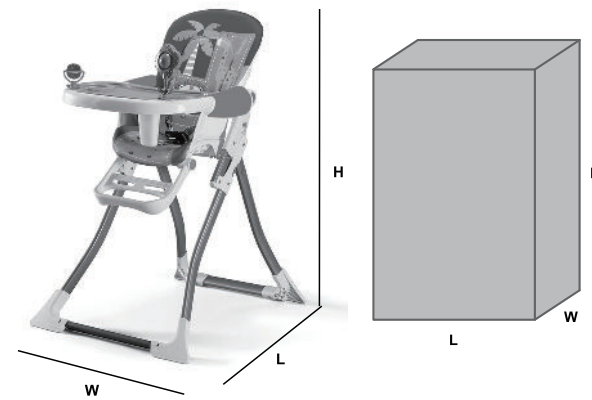
The method to fold



Pull this button and fold high chair as figure 8. (Remove tray before fold high chair)

2

Dimension Info



BABY HIGH CHAIR LENGTH	68.0 CM	CARTON LENGTH	49 CM
BABY HIGH CHAIR WIDTH	60.0 CM	CARTON WIDTH	17 CM
BABY HIGH CHAIR HEIGHT	92.5 CM	CARTON HEIGHT	76 CM
BABY HIGH CHAIR WEIGHT	6.25 KGS		

Due to variation on the styles and designs of our products, the photographs and illustrations shown in this manual are generic. Therefore products fabric, colour and design may vary from images shown, Chelino reserves the right to alter products specifications

**SAFETY HINTS \ INSTRUCTIONS OF USE \ WARRANTY & GAURANTEE GUIDELINES**  
1. Please read this User Guide thoroughly before using this product. If you are not sure on any point in this guide please consult with the sales person whom sold you this product or contact Chelino on 0118352520. Our offices hours are Monday to Thursday from 9:00 am to 13:00 pm and 14:00 pm to 16:30 pm and Fridays from 9:00 am to 12:00 pm and 14:00 pm to 16:30 pm. Our offices are closed on Saturdays, Sundays, Public holidays and for three weeks during the December/ January festive season. We are situated at 12 Kimberlite Road, Theta Ext, Booysens Reserve, 2091, Johannesburg, Gauteng, RSA.  
2. To avoid suffocation or swallowing or any other illness, please keep all packaging which have been removed from parts wrapped in the box away from infants, toddlers, children or any other living being. Please carefully dispose of the unwanted packaging once this product is fully assembled and you are satisfied with your purchase.  
3. Please make sure that you are entirely satisfied with your purchase before removing the warning card attached to this product and before using this product. Once the warning card has been removed and if this product has been used we will not accept the return of this product.  
4. If you are not entirely satisfied with this product purchased, please disassemble this product and re-pack it in the original packaging and return it to the store you purchased it from together with the proof of purchase. Depending on the stores policy, you will either be entitled to a replacement product, a credit voucher or a refund. This depends on the stores policies.  
5. If you are not entirely satisfied with the assemble of this product or if you are not 100% sure that you have assembled this product correctly, please take this product back to the store you purchased it from and

3

request for some assistance in checking if the assembly is correct or get this product assembled. Depending on the store's policy, there could be an extra charge for this service. Chelino will not take any responsibility if this product is incorrectly assembled thus causing any sort of injury to the user or the child. Alternatively you can contact Chelino directly on 0118352520, our offices hours are Monday to Thursday from 9:00 am to 13:00 pm and 14:00 to 16:30 pm and Fridays from 9:00 am to 12:00 pm and 14:00 pm to 16:30 pm. Our offices are closed on Saturdays, Sundays, Public holidays and for three weeks during the December/January festive season. There is a charge for the assembly of any product. If you require a Chelino representative to assemble this product you will have to bring this product to our offices which are situated at 12 Kimberlite Road, Theta Ext, Booysens Reserve, 2091, Johannesburg, Gauteng, RSA.  
6. Please note, that any repair which will needs to be made to this product must be done at the Chelino workshop which is situated at 12 Kimberlite Road, Theta Ext, Booysens Reserve, 2091, Johannesburg, Gauteng, RSA. Our offices hours are Monday to Thursday from 9:00 am to 13:00 pm and 14:00 pm to 16:30 pm and Fridays from 9:00 am to 12:00 pm and 14:00 pm to 16:30 pm. Our offices are closed on Saturdays, Sundays, Public holidays and for three weeks during the December/ January festive season. We do not provide any loan/courtesy products while your product has been sent in for repairs. Chelino requires 7 working days to repair any product, but this lead time may vary depending on the transportation of the product too and from yourself. Once the warranty card is detached from this product and once this product is used even if used once and if there is a fault, this product will need to be sent to the Chelino Workshop for the repair and no refund\ credit\exchange will be allowed. Only a Chelino representative can decide whether the product needs to be replaced\credited\exchanged.  
7. Once you are satisfied with the assembly of this product and have read this instruction and agree to the terms stated and are ready to use this product, please ensure that all safety locks are engaged to ensure safe use of this product.  
8. Please ensure that the child is always securely strapped into this product at all times. The seat belts must be properly adjusted to keep the child secured. If the seat belt is too loose the child could fall out thus causing injury. If the seat belts are too tight it will cause injury and aggravation to the child.  
9. Never leave the child unattended or without parent\guardian supervision while in this product, as injury could be caused by other parties intentionally or unintentionally. This product can be knocked over and the child can be injured.  
10. Never lift this product while the child is in it. This can cause injury to the child seated in this product.  
11. Never allow the child to stand on the seat of this product. This can cause this product to fold and thus causing injury to the child. The child can also fall out of this product causing injury to him\herself. This can also cause damage to structure of this product.  
12. This product is designed for the use of only one child. This product cannot accommodate more than one child.  
13. Take special care when adjusting the backrest if the child is seated in this product. It is preferred to select the desired backrest position before seating the child this product.  
14. Front tray is there for convenience and are not suitable for holding large amounts of liquids (hot or cold) or heavy objects. These areas are also not waterproof or leak proof and spillage can occur.  
15. This product is fit to carry a child weighing no more than 18kgs. It is suitable from 6 months (when child can could sit by himself) to 6 years. It could be used as table after 3 years old.  
16. Do not place this product near to a window or fire or heating equipment, it will cause danger.  
17. Chelino takes no responsibility and will not be held liable for any damage or injury caused by using this product or if this product is used for any other purposes other than its intended purpose.  
18. Please note, there are no warranties or guarantee on any fabrics or sponge grip handles used on this product.

4

Chelino

Chelino

Stores: ChelinoBaby – Ormonde – JHB  
ChelinoBaby – Fourways – JHB  
ChelinoBaby – Menlyn – Pretoria  
ChelinoBaby – Kolonnade – Pretoria  
ChelinoBaby – Gateway – Durban  
ChelinoBaby – Online – [www.chelinobaby.co.za](http://www.chelinobaby.co.za)



Imported for :  
ChelinoBaby Group of Companies.  
No. 12 Kimberlite Road, Theta Ext 5, Booysens Reserve, JHB, 2091. SA.  
Tel: +2711 8352520  
Info: [info@chelino.co.za](mailto:info@chelino.co.za)



CHEF

ChelinoBaby Group of Companies  
No. 12 Kimberlite Road, Theta Ext 5, Booysens Reserve, JHB, 2091. SA.  
+2711 8352520

[www.chelinobaby.co.za](http://www.chelinobaby.co.za)

