

ChelinoBaby®

Stores: ChelinoBaby – Ormonde - JHB
ChelinoBaby – Fourways – JHB
ChelinoBaby – Menlyn – Pretoria
ChelinoBaby – Gateway - Durban
ChelinoBaby – Online – www.chelinobaby.co.za



Importer:
Anchor International
Add: 12 Kimberlite Road , Theta Ext 5 Booyens Reserve ,
JHB 2091 South Africa.
Tel: +2711 8352520

Chelino

PILOT 360

GROUP 0 0+ I II III 0-36kg



**IMPORTANT: READ THESE
INSTRUCTIONS CAREFULLY BEFORE
USE AND KEEP FOR FUTURE
REFERENCE.**

If these instructions are not followed, the safety of a child may be severely endangered.

CATALOGUE

1. Notice.....	3	5.1.2.1 Group I (9-18KG).....	19
2. Structure Name.....	5	5.1.2.2 Group II III (15-36 KG).....	20
3. Warning.....	6	5.2 Installed in Car with ISOFIX	21
4. Safety Seat Use Method.....	8	5.2.1 Installed in Rearward Facing Position with ISOFIX	21
4.1 Install location.....	8	5.2.1.1 Group 0 I (0-18KG).....	21
4.2 How to Use the Harness Buckle.....	10	5.2.2 Installed in Forward Facing Position with ISOFIX.....	22
4.3 Adjust the Headrest.....	10	5.2.2.1 Group I (9-18KG).....	22
4.4 Adjust Safety Belt Lengthen.....	12	5.2.2.2 Group II III (15-36 KG).....	23
4.5 Adjust the Rotation of the Seat.....	13	5.2.2.2.1 Installed with ISOFIX connector and Belt	24
4.6 Adjust the Angle of the Child Safety Car Seat.....	14	5.2.2.2.2 Installed with ISOFIX connector, Top Tether and Belt	25
4.7 Removing 5-Point Harness and Storage the Accessory Part.....	15	6. Care and Maintenance	26
4.8 Removing Triangle Pad.....	17	7. Warranty	27
4.9 Removing the Fabric Cover.....	17	8. Main Technical Parameter	27
5. Installed in Car	18		
5.1 Installed in Car with Belt.....	18		
5.1.1 Installed in Rearward Facing Position with Belt.....	18		
5.1.1.1 Group 0+(0-13KG).....	18		
5.1.2 Installed in Forward Facing Position with Belt.....	19		

1.NOTICE**When using as Universal category (Group 0+I II III), please notice below information:**

This is a "Universal" child restraint. It is approved to Regulation No. 44, 04 series of amendments, for general use in vehicles and it will fit most, but not all, car seats.

A correct fit is likely if the vehicle manufacturer has declared in the vehicle handbook that the vehicle is capable of accepting a "Universal" child restraint for this age group.

This child restraint has been classified as "Universal" under more stringent conditions than those which applied to earlier designs which do not carry this notice.

If in doubt, consult either the child restraint manufacturer or the retailer.

Only suitable if the approved vehicles are fitted with lap/3 point/static/with retractor safety-belts, approved to UN/ECE Regulation No. 16 or other equivalent standards.

Notice regarding ISOFIX child restraint system (Group I,Forward-facing):

1. This is an ISOFIX CHILD RESTRAINT SYSTEM. It is approved to Regulation No. 44, 04 series of amendments for general use in vehicles fitted with ISOFIX anchorages systems.
2. It will fit vehicles with positions approved as ISOFIX positions (as detailed in the vehicle handbook), depending on the category of the child seat and of the fixture.
3. The mass group and ISOFIX size class for which this device is intended is: Group I (9-18kg); Class B1.

Mass group		ISOFIX size category
0-up to 10 kg	F	ISO/L1
	G	ISO/L2
	E	ISO/R1
0+ -up to 13 kg	C	ISO/R3
	D	ISO/R2
	E	ISO/R1
I-9 to 18 kg	A	ISO/F3
	B	ISO/F2
	B1	ISO/F2X
	C	ISO/R3
	D	ISO/R2

When using as Semi-universal category (Group 0 I II III), please notice below information:

This child restraint is classified for "Semi-universal" use and is suitable for the seat positions of the following cars:

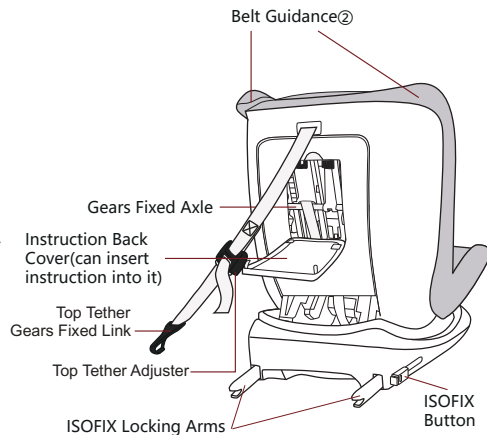
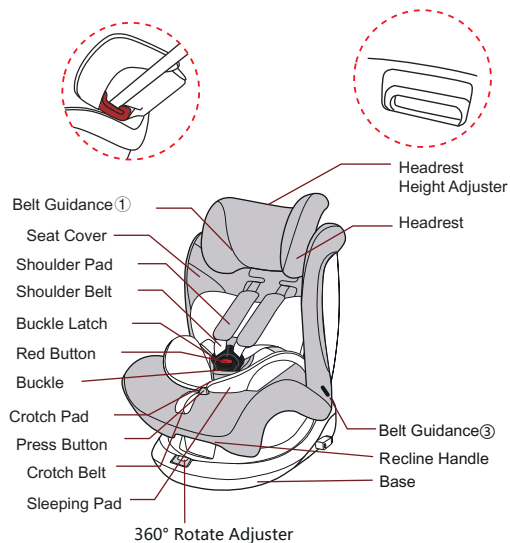
CAR	FORONT	REAR
	Outer	Centre
(Model)	Yes-	Yes- No

Seat positions in other cars may also be suitable to accept this child restraint. Please refer to the information documents or the retailer's website for the suitable car model list. If in doubt, consult either the child restraint manufacturer or the retailer any time. Only suitable if the approved vehicles are fitted with 3 point safety-belts and ISOFIX attachments, approved to UN/ECE Regulation No. 16 or other equivalent standards.

Notice regarding ISOFIX child restraint system (Group 0 I ,Rearward-facing):

1. This is an ISOFIX CHILD RESTRAINT SYSTEM. It is approved to the Regulation No.44,04 series of amendments, for general use in vehicles fitted with ISOFIX anchorages systems.
2. It will fit vehicle with positions approved as ISOFIX positions (as detailed in the vehicle handbook), depending on the category of the child seat and of the fixture.
3. The mass group and the ISOFIX size class for which this device is intended is:
E for Group 0(0-10kg) and
D for Group I(9-18kg)

2. STRUCTURE NAME



3. WARNING

IMPORTANT! Please carefully read and make sure you understand all instructions in this manual and in the vehicle owner's manual related to child safety seats. Install and use the child safety seat as described in the instruction manual. Failure to do this could result in serious injury or death of your child. Keep the instructions together with the child restraint for future reference.

IMPORTANT! Because of potential medical issues inherent to low birth weight and premature infants, always have a trained professional doctor or hospital staff member assess the suitability of the child restraint prior to leaving the hospital or using the child restraint.

DO NOT use a child safety seat with damaged or missing parts.

DO NOT use damaged or frayed harness straps or vehicle belt.

0-36 kg.

NEVER use this child restraint with any other base except ones that the manufacturer permits.

DO NOT use a child safety seat that has been in a crash. A crash can cause damage to the child safety seat that you cannot see.

DO NOT use a second-hand child seat or child seat whose history you do not know.

DO NOT leave your child in this restraint for an extended period of time.

DO NOT use on vehicle seats that face the sides or rear of the vehicle. Use the child safety seat only on forward-facing vehicle seats.

The rigid items and plastic parts of a child restraint must be so located and installed that they are not liable, during everyday use of the vehicle, to become trapped by a movable seat or in a door of the vehicle.

Keep the restraint rear-facing until the child's mass is greater than 9kg.

Any straps holding the restraint to the vehicle should be tight, that any straps restraining the child should be adjusted to the child's body, and that straps should not be twisted.

Ensuring that any lap strap is worn low down, so that the pelvis is firmly engaged, shall be stressed.

It is dangerous that making any alterations or additions to the device without the approval of the competent authority, and not following closely the installation instructions provided by the child restraint manufacturer.

The chair should be kept away from sunlight, otherwise it may be too hot for the child's skin.

Children are not left in their child restraint system unattended.

Any luggage or other objects liable to cause injuries in the event of a collision shall be properly secured.

The child restraint must not be used without the cover. The seat cover should not be replaced with any other than the one recommended by the manufacturer, because the cover constitutes an integral part of the restraint performance.

If position of the adult safety-belt buckle relative to the main load bearing contact points on the child safety seat is unsatisfactory. Please contact the manufacturer if in doubt about this point.

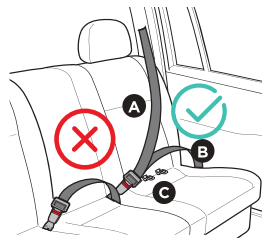
Not to use any load bearing contact points other than those described in the instructions and marked in the child restraint.

Please read the car manufacturer's handbook before installing this ISOFIX child safety seat.

4. SAFETY SEAT USE METHOD

4.1 Install Location

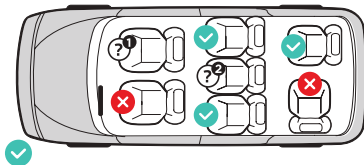
4.1.1 When using as Universal category (Group 0+ I II III), this child restraint system is suitable for seatbelt models equipped with a three-point retractor that complies with ECE R16 and does not apply to models only equipped with 2-point seat belts.



- A** Car Safety Belt—Diagonal Belt
- B** Car Safety Belt—Lap Belt
- C** ISOFIX Attachments

4.1.2 When using as ISOFIX child restraint system (Group I), this child restraint system is suitable for vehicles equipped with the ECE R14 requirements. And only after installed ISOFIX, then can use on it.

4.1.3 When using as Semi-Universal category (Group 0 I II III), this child restraint system is suitable for seat belt models equipped with the three-point retractor that has passed the ECE R16 requirement and is not suitable for models only equipped with 2-point seat belts. And only after installed ISOFIX, then can use on it.



Correct/ Proper ✘ Wrong/ Improper

- ? ¹ Ensure the airbag is deactivated when using the seat on the front passenger seat
- ? ² Only use the seat on the seat if the vehicle seat is equipped with a 3-point seat belt or isofix attachments

4.2 How to use the harness buckle

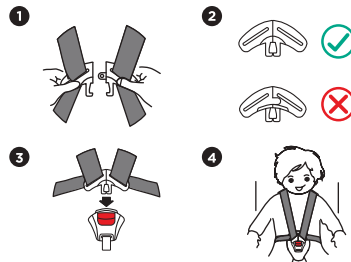
Hold the two buckle latches together.

Make sure the right side is up.

Engage them before putting them into the harness buckle, which should make a CLICK noise.

Pull shoulder straps to remove all slack from the lap section ensuring that the harness is lying flat and the harness buckle is locked.

Open the harness buckle by pressing the red button.

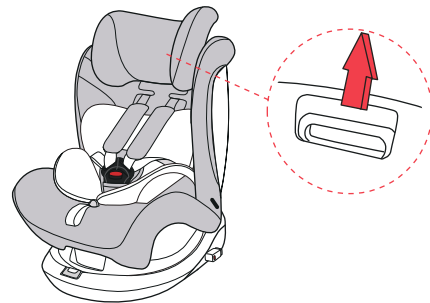


4.3 Adjust the Headrest

A. When Use in Group 0 0+I (Use 1-6 level).

The shoulder straps are adjusted as follows: Loosen the shoulder straps of the child seat as much as possible.

Pull the headrest height adjuster, select the correct height of the shoulder straps and engage it in position that fits your child by releasing the adjuster.



B. When Use in Group II III (Use 7-9 level)

When child grow up above 15KG, the headrest should use 7-9 level height.

Slide the belt loops off from Gear fixed axle, slide the left shoulder belt first then to the right one, you can remove the shoulder belt.(see4.7)

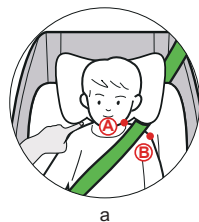
Then from the front of the child seat, pull out shoulder straps through the slots, put them on below of cloth cover.

After remove them, take out the Gears Fixed Axle from the plastic stator and storage it, pull the headrest height adjuster, select the correct height of the shoulder straps and engage it in the position that fits your child by releasing the adjuster.

ATTENTION!

A correctly adjusted headrest ensures optimal protection for your child in the safety seat:

The headrest must be adjusted so that the shoulder straps are at the same level as your child's shoulders.



Keep the diagonal belt at the position of shoulder between the outside of the neck and shoulder (Middle of point A and point B).

Keep the lower edge of headrest as close as possible to the child's shoulder and keep a finger distance between the lower edge of headrest and child's shoulder.(see picture a)

CAUTION! The shoulder straps must not run behind the child's back, at ear height or above the ears.

4.4 Adjust Safety Belt Lengthen**A Tighten Safety Belt**

Pull up shoulder belt and the lap belt will tighten, then pull crotch belt to tighten safety belt.

Tighten the safety belt as much as possible without causing discomfort to the child. The lap belt is as low as possible and should put near child's crotch not belly.

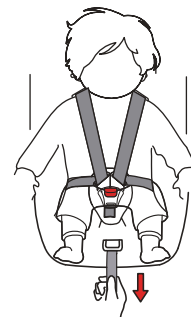
P.S.: Loose safety belt is dangerous. Please check safety belt adjuster whether work, then tighten safety belt. After tightening the seat belt, adjust the shoulder pads to the appropriate position on the chest.

B Loosen Safety Belt

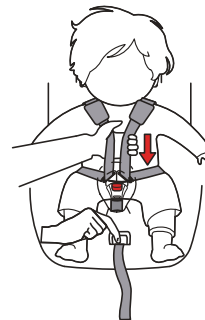
Press red button can loosen safety belt.

When pressing limited slide button, the other hand grasping shoulder belt which under shoulder pad (not grasp shoulder pad belt) to child right ahead to loosen safety belt.

A:



B:



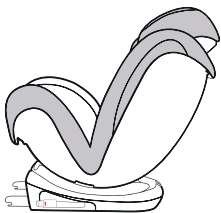
4.5 Adjust the Rotation of the Seat

Pull the rotation adjuster out with your thumb, then rotate the safety car seat to 360 degree angel. (see picture a)

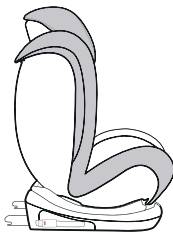
ACTION: Each time rebound the rotation adjuster back. To make sure the seat is locked into position.

A. Rearward Direction: Group 0 0+ I (0-18KG), must use rearward direction (see picture①)

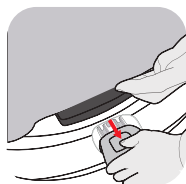
B. Forward Direction: Group I II III(9-36KG), must use forward direction (see picture②)



picture1



picture2



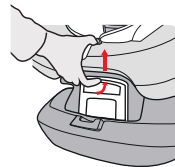
a

4.6 Adjust the Angle of the Child Safety Car Seat

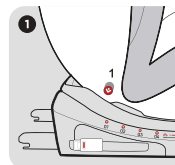
Push the recline handle up and pull the seat outward (see picture a), then the seat can be adjusted.

It can be adjusted to 4 positions for forward-facing use(see picture①②③④).

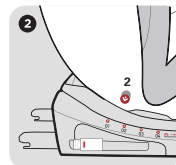
When the seat is in the position of fourth level, rotate the seat to the rearward direction, and the seat can be adjusted to fifth level.



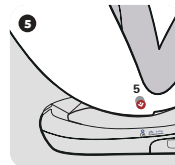
a



First Level



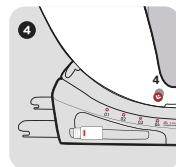
Second Level



Fifth Level (Lying Level)



Third Level



Fourth Level

0-36 kg.

4.7 Removing 5-Point Harness and Storage the Accessory Part

Step 1: Firstly open the instruction back cover.

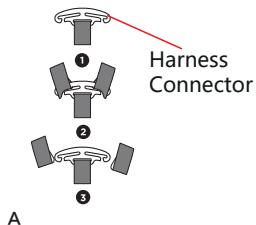
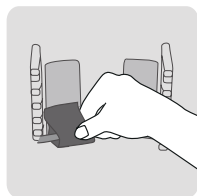
Step 2: Removing Shoulder Pads and Belts

Loosen the 5-point harness of the child seat as much as possible, Remove the belt from the harness connector and storage harness connector link to harness connector area on the behind of the backrest. (Picture A and Picture B) Remember to tighten the safety belt. (See 4.4) To ensure harness connector linked well, can not be moved.

Take the Gears Fixed Axle from the plastic stator and storage Gears Fixed Axle to Gears Fixed Axle area on the behind of the backrest(Picture C).

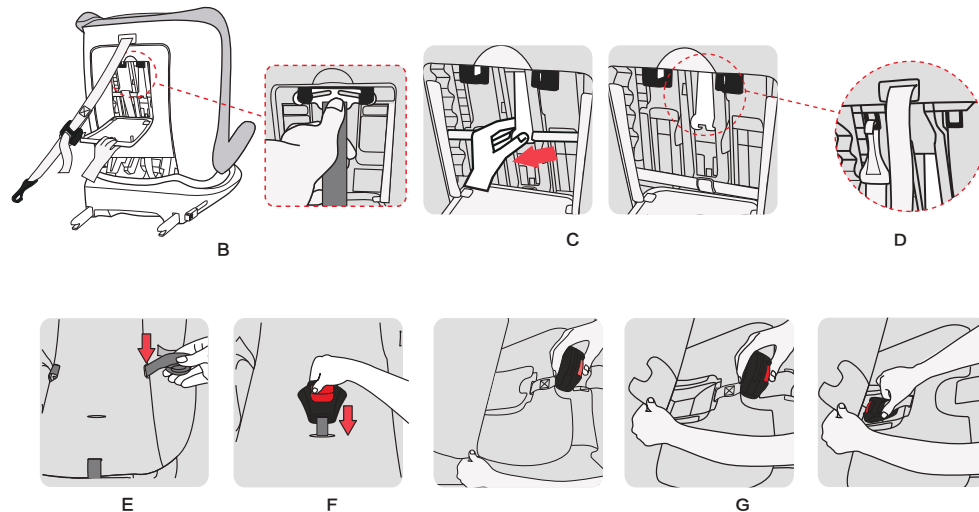
In Group II III, when don't use the Top Tether for installation, storage the Top Tether Gears Fixed Link to Top Tether Gears Fixed Link area on the behind of the backrest(Pictured). Close the instruction back cover after putting the above accessory parts to the corresponding areas.

Finally put redundant belt into cloth cover. (PictureE)



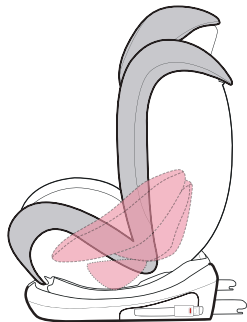
Step 3: Storage Buckle

Open the buckle, take out buckle latches from shoulder belt. Pull down buckle cross cloth cover. later pick up the cover in the PE board and storage the buckle. (PictureF and G)



4.8 Removing Triangle Pad

When your child's weight exceeds 8kg, remove the sleeping pads and triangle pads.



4.9 Removing the Fabric Cover

1. Remove the 5-point harness.
2. Take off the cover from the backrest and base.
3. Move the headrest of the child seat up to the highest position.
4. First take the cover off the base of the headrest, then remove the cover of the headrest.

To re-fit the cover, simply follow the above steps in reverse.

CAUTION! Never use the child seat without it correctly installed. Make sure that the metal plate is correctly attached.

CAUTION! Check that the harness straps are not twisted and that they have been correctly inserted in the belt slots of the cover.

5. INSTALLED IN CAR

5.1 Installed in Car with Belt

5.1.1 Installed in Rearward Facing Position with Belt

5.1.1.1 Group 0+(0-13KG)

Pull the vehicle seatbelt and pass the lap belt section through the belt guidance^③ and under the sleeping cushion.

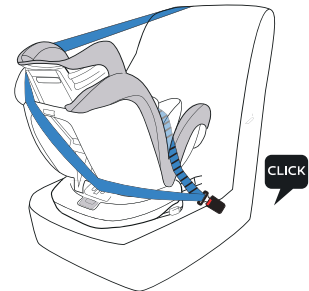
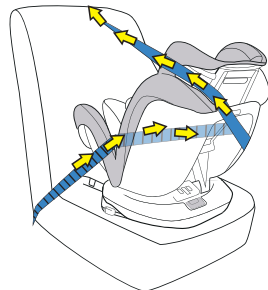
Pass the diagonal seat belt section through the belt guidance^②

Fasten the seat belt and pull it tight, ensuring that the seat belt is not twisted.

NOTE: For children of this size, the child seat must only be installed in the rearward facing position and at a maximum angle of inclination (lying). To make sure that the car seat has been installed correctly, please shake it before use.

DO NOT twist the belt!

Ensure that the buckle tongues are properly locked into the vehicle seat buckle - you will hear an audible **CLICK!**



5.1.2 Installed in Forward Facing Position with Belt

5.1.2.1 Group I (9-18KG)

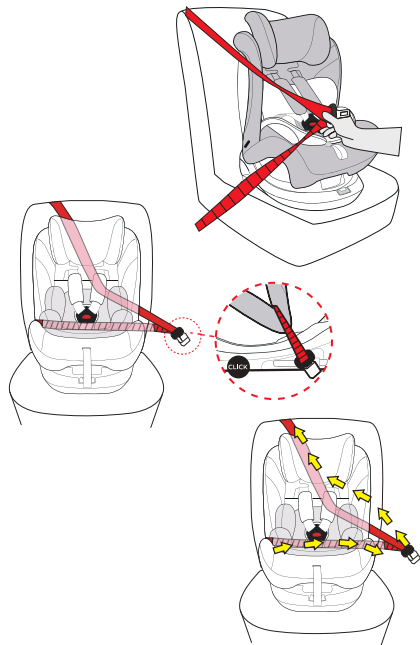
Place the child seat forward facing on the vehicle seat (in the direction of travel).

Pull the diagonal belt section through belt guidance^②. Place the lap belt section in the red belt guidance^③.

Pull out safety belt from the back to the side, lap belt section respectively from the belt guidance^③ of the base. One side of the diagonal belt through the backrest and the belt guidance^③, another side along the upper inside.

Using your knee to press down on the child seat, tighten the vehicle seat belt as follows:

Pull on the lower part of the diagonal seat belt section near the vehicle seat buckle to tighten the lap belt section.



5.1.2.2 Group II III (15-36KG)

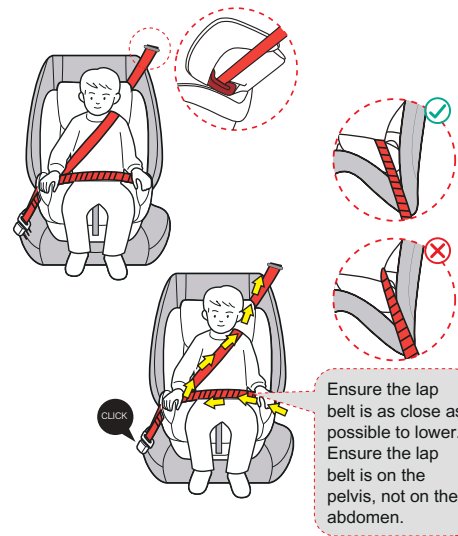
NOTE: When you use this safety car seat in Group II III, please remove the 5-point harness, sleeping pads and the triangle pads refer to Chapter 4. 7. Place the child seat forward facing on the vehicle seat (in the direction of travel). First pull out the belt from the belt ALR. Diagonal belt through the same side of Guidance^①, lap belt through the same side of Guidance^③, then pull the diagonal belt and lap belt together through another side of Guidance^③.

NOTE: Make sure that the diagonal seatbelt section runs over your child's shoulder bone, and not in front of his or her neck.

Lock the tip of the buckle into the vehicle seat buckle with a CLICK noise. Follow the direction of arrow to tighten belt, and put redundant belt into cloth cover. Shake the child safety car seat to make sure it is securely attached.

0-36 kg.

CAUTION! The diagonal seat belt section must run diagonally backward. You can adjust the course of the belt with your vehicle's adjustable belt deflector on both sides.



5.2 Installed in Car with ISOFIX

5.2.1 Installed in Rearward Facing Position with ISOFIX

5.2.1.1 Group 0 I (0-18KG)

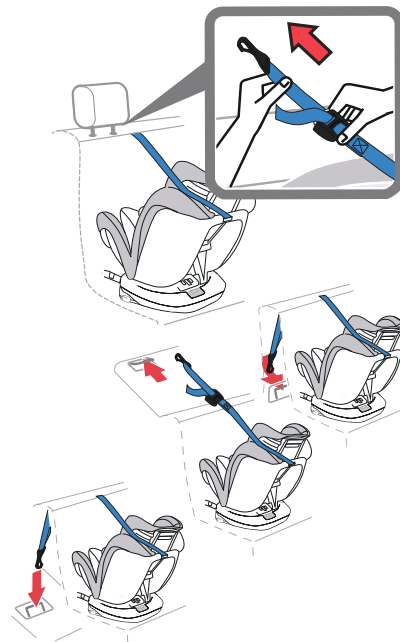
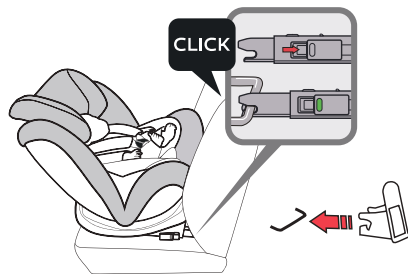
Put the ISOFIX insert guide into the two ISOFIX attachment points of your vehicle

If you don't have ISOFIX insert guide, please ignore this step.

NOTE:The ISOFIX attachment points are located between the surface and the backrest of the vehicle seat. Press the ISOFIX button to pull out the two locking arms from the base bottom. Pull the locking arm to and fro until you hear an audible **CLICK** which indicates they are fully engaged. And on both sides of the locking arms button turn into green safety color.

Pull out the top tether, and press the release button, pull the top tether long enough to hang the latch on the back of the car seat.

Fix the latch on the fixed point, and the position of the fixed point are shown in the picture (one of the three positions). Make sure the hook is tightened up.



5.2.2 Installed in Forward Facing Position with ISOFIX

5.2.2.1 Group I (9-18KG)

Put the ISOFIX insert guide into the two ISOFIX attachment points of your vehicle.

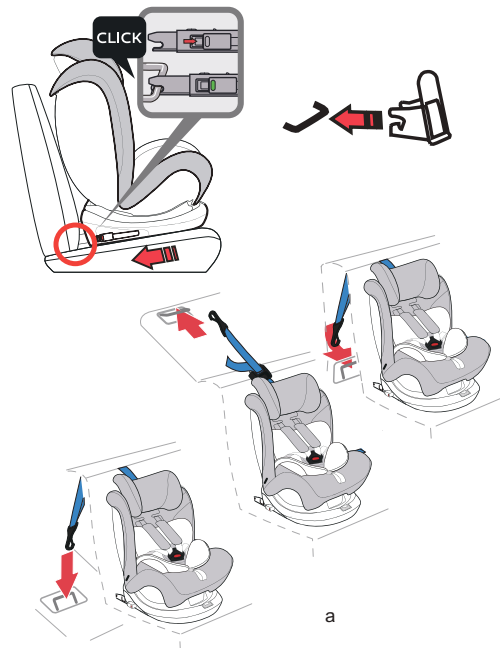
If you don't have ISOFIX insert guide, please ignore this step.

NOTE: The ISOFIX attachment points are located between the surface and the backrest of the vehicle seat.

Press the ISOFIX button to pull out the two locking arms from the base bottom. Pull the locking arm to and fro until you hear an audible **CLICK** which indicates they are fully engaged. And on both sides of the locking arm's button turn into green safety color.

Pull out the top tether and press the release button, pull the top tether long enough to hang the latch on the back of the car seat.

Fix the latch on the fixed point, and the position of the fixed point are shown in the picture (one of the three positions). Make sure the hook is tightened up (see page 23 picture a).



5.2.2.2 Group II III (15-36KG)

NOTE: When you use this safety car seat in group II III, please remove the 5-point harness, sleeping pads and the triangle pads refer to Chapter 4.7 Place the child seat forward facing on the vehicle seat (in the direction of travel).

Put the ISOFIX insert guide into the two ISOFIX attachment points of your vehicle.

If you don't have ISOFIX insert guide, please ignore this step.

NOTE: The ISOFIX attachment points are located between the surface and the backrest of the vehicle seat.

Press the ISOFIX button to pull out the two locking arms from the base bottom. Pull the locking arm to and fro until you hear an audible **CLICK** which indicates they are fully engaged. And on both sides of the locking arms' button turn into green safety color.

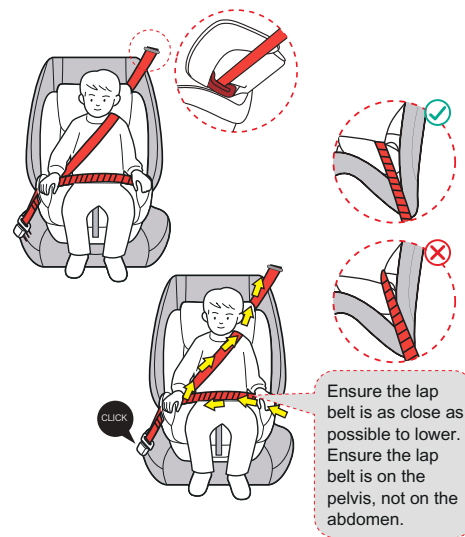
5.2.2.2.1 Installed with ISOFIX connector and Belt

First pull out the belt from the belt ALR. Diagonal belt through the same side of Guidance①, lap belt through the same side of Guidance③, then pull the diagonal belt and lap belt together through another side of Guidance③.

NOTE: Make sure that the diagonal seatbelt section runs over your child's shoulder bone and not in front of his or her neck.

Lock the tip of the buckle into the vehicle seat buckle with a **CLICK** noise. Follow the direction of arrow to tighten belt, and put redundant belt into cloth cover. Shake the child safety car seat to make sure it is securely attached.

CAUTION! The diagonal seat belt section must run diagonally backward. You can adjust the course of the belt with your vehicle's adjustable belt deflector on both sides.



5.2.2.2.2 Installed with ISOFIX connector

Top Tether and Belt

Pull out the top tether and press the release button, pull the top tether long enough to hang the latch on the back of the car seat.

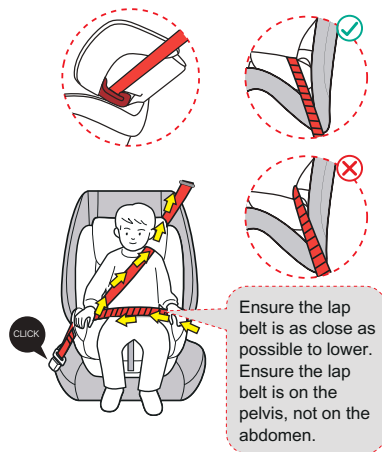
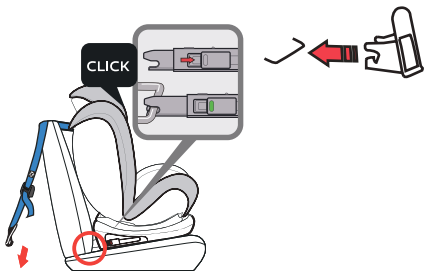
Fit the latch on the fixed point and the position of the fixed point are shown in the picture (one of the three positions). Make sure the hook is tightened up.

First pull out the belt from the belt ALR. Diagonal belt through the same side of Guidance ①, lap belt through the same side of Guidance ③, then pull the diagonal belt and lap belt together through another side of Guidance ③.

NOTE: Make sure that the diagonal seat belt section runs over your child's shoulder bone and not in front of his or her neck.

Step 3: Lock the tip of the buckle into the vehicle seat buckle with a **CLICK** noise. Follow the direction of arrow to tighten belt, and put redundant belt into belt ALR. Shake the child safety car seat to make sure it is securely attached.

CAUTION! The diagonal seat belt section must run diagonally backward. You can adjust the course of the belt with your vehicle's adjustable belt deflector on both sides.



6. CARE AND MAINTENANCE

Periodically inspect your child seat for worn out or damaged parts. If damaged parts are found, replace the child seat. Keep the child seat clean. Do not lubricate any parts of the child seat.

To prolong the life of your nursery product, keep it clean and do not leave it in direct sunlight for extended periods of time.

Removable fabric covers and trims may be cleaned using warm water with a household soap or a mild detergent. Allow it to dry fully, preferably away from direct sunlight.

CLEANING THE BUCKLE

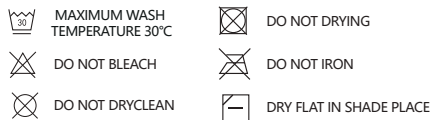
Food, drink, or other debris may collect inside the harness buckle which can affect proper functioning. Wash in warm water until clean. Be sure you can hear an audible click to make sure the buckle is working properly.

CLEANING THE HARNESS AND SHELL

Sponge clean using warm water and mild soap; do not use any other cleaning agents.

STORAGE

Store in a safe, dry place and away from heat and direct sunlight. Avoid placing heavy objects on top of the seat.



7.WARRANTY

The warranty period starts from the date of purchase and is valid for a period of 12 months.

The warranty is only applicable to material and production defects. The date of purchase can only be proven with the original sales receipt. This warranty is only applicable to the original owner and is not

transferable. The warranty is only applicable to products that have not been adapted by the user. In the case of any defects, the owner is required to return the product to the retailer.

The manufacturer is not liable for any damages other than those to products supplied or manufactured.

8.MAIN TECHNICAL PARAMETER

Length : 500mm

Width: 440mm

Height: 600-800mm

