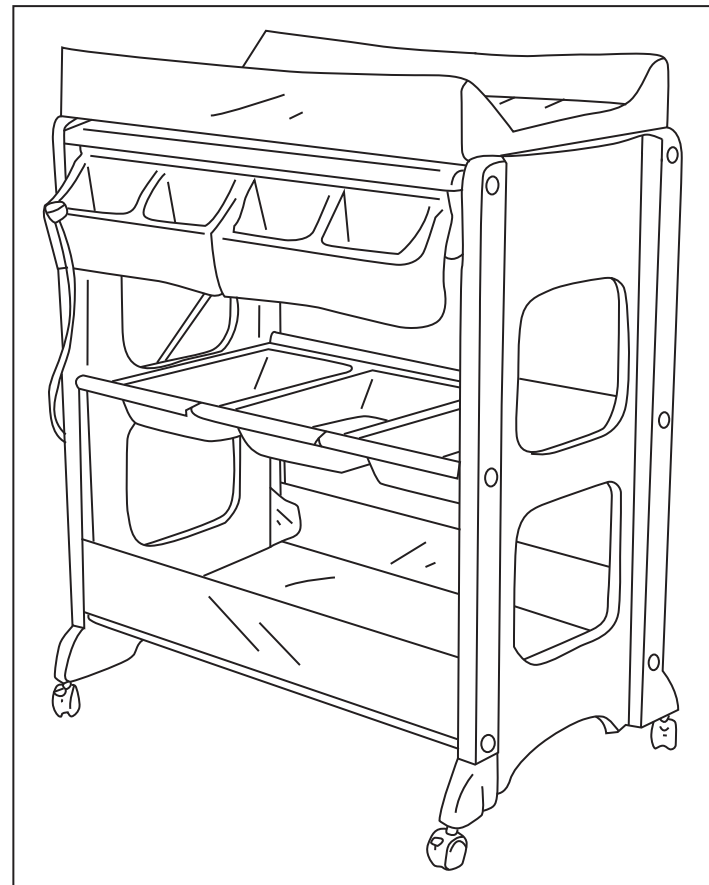


14.5cm



PRIMA ROSSI INSTRUCTION MANUAL



21cm

IMPORTANT

Due to variation on the styles and designs of our products, the photographs and illustrations shown in this manual are generic. Therefore products fabric, colour and design may vary from images shown, Chelino reserves the right to alter products specifications.

RETAIN FOR FUTURE REFERENCE & READ CAREFULLY

USER GUIDE

Thank you for choosing this product. Please take a little time to read the important safety notes detailed below. This will ensure many years of happy, safe use.

SAFETY:

- WARNING: Do not leave the child unattended.
WARNING: The drainage hose should be permanently attached to the bath tub drainage outlet or stored out of the reach of children.
Be aware of the risk of open fires and other sources of strong heat, such as electric bar fires, gas fires, etc. in the vicinity of the changing unit.
All assembly fittings shall always be correctly tightened and checked regularly.
Always apply changing mat studs to side panels even when using bath.
Do not use the changing station when any part is broken, torn or missing.
Do not move the changing station for a manner it was not designed for.
No other change pad shall be used with the change unit, other than the change pad supplied.
Assemble the dresser once, it is not designed to be taken apart and re-assembled.
Lockable castor/ wheels should be locked when the changing unit is in use.
The weight of the child should not exceed 11kgs. Maximum age 12 months.
CARE AND MAINTENANCE
The changing station may be lightly dusted and surface of the shelves should be wiped over using a damp cloth.
Never clean with abrasive, ammonia based, bleach or spirit type cleaner.

WARNING



LIST OF PARTS

- 1. Left side panel 2. Right side panel 3. Side frames 4. Top frame 5. Mattress
6. Base shelf 7. Bath tub 8. Pan trays 9. Utility holders 10. Wheels
11. Bolts-A 12. Bolts-B 13. Drainage pipe 14. Plug 15. Assembly Tool
16. Steel bar 17. Adapting pieces 18. Screw 19. Rubber rings

ASSEMBLING THE CHANGING STATION

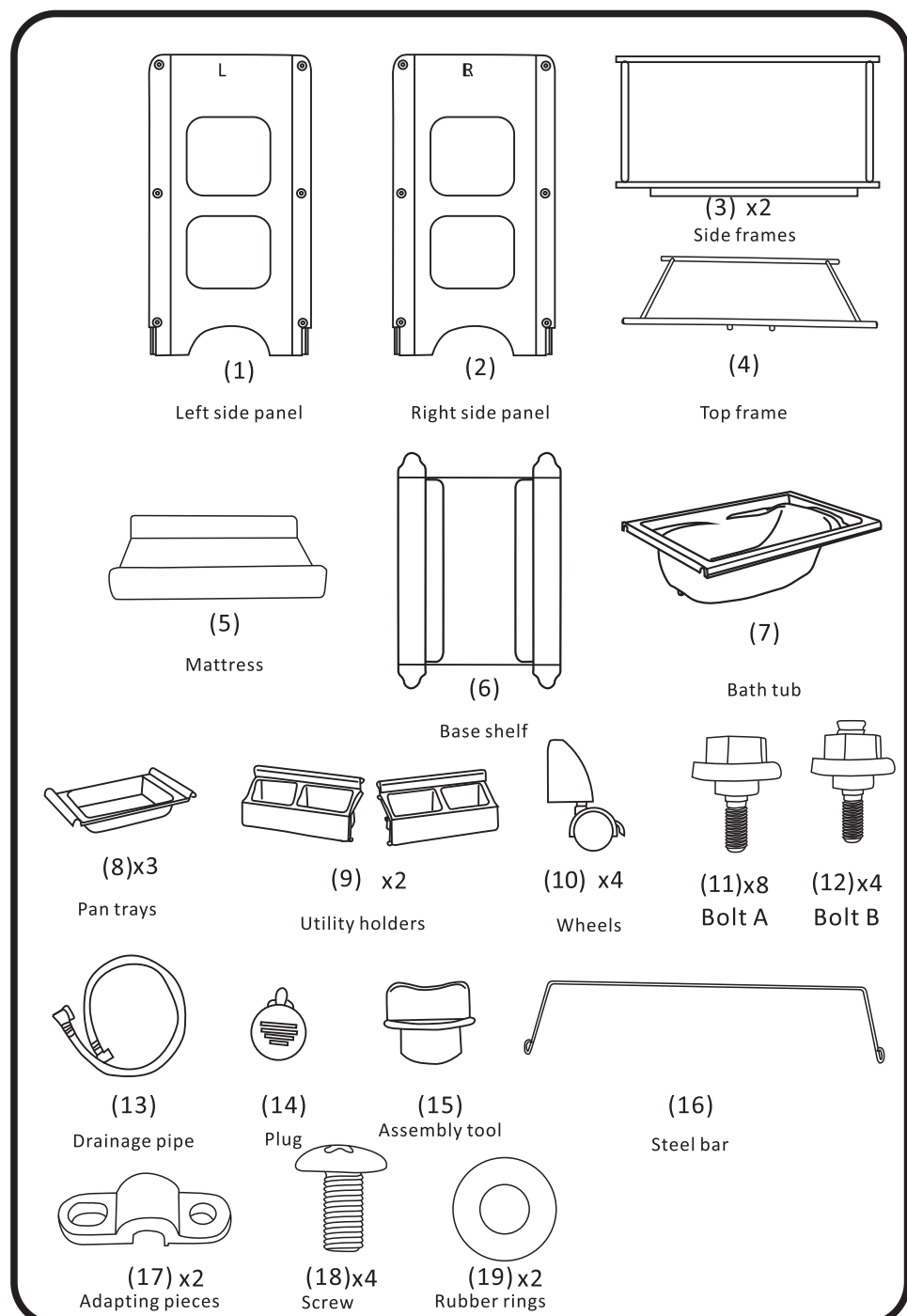
- Adult assembly required. Do not allow children to play with the screws or parts as they may present a small parts hazard.
If any parts are missing or broken, please contact the manufacturer or distributor to have the parts replaced. Use only Big Softies replacement parts.
Unpack the changing unit carefully and unwrap each part, taking care not to lose the plastic bag of small items. Check the contents against the list of parts.
Picture 1. Attach the two sides frames (3) to the left side panel (1) by inserting bolts-A (11) through the holes in the side panel and tightening into the threaded ends of the side frames using the tool supplied (15).
Picture 2. Place rubber rings (19) around front ends of top frame (4). Front of top frame has 2 x plastic knobs attached underneath. Put the steel bar (16) on the back side of the top frame (4). Attach the top frame (4) to the left side panel (1) by inserting bolts-B (12) through the holes in the side panel and tightening into the threaded ends of the side frames using the tool supplied (15). Attach the right side panel (2) to the frames by inserting the bolts-A and bolts-B.
Picture 3. Place the steel bar (16) on the back of the mattress. Follow the positioning sticker marks, to ensure the change mattress is correctly installed. Secure the steel bar to the mattress with adapting pieces (17) and screws (18). (Phillips head screw driver required, not included)
Picture 4. Attach the wheels (10) to all four corners of the changing unit, pushing the wheels firmly into place along the slots provided.
NOTE: Ensure the wheels are locked when using the changing unit.
Picture 5. Attach the base shelf (6) by placing the shelf in position then securing with flaps (A) wrapped around the uprights of the two side frames (3) and with flaps (B) hanging straight.
Picture 6. Attach the utility holders (9) by hooking them over the front of the top frame. Attach the pan trays (8) by hooking each tray over the tops of the two side frames (3) as shown above. Finally the bath tub (7) can be placed in the top of the changing unit. Attach drainage pipe (13) to the outlet on the underside of the bath.

USING THE BATH

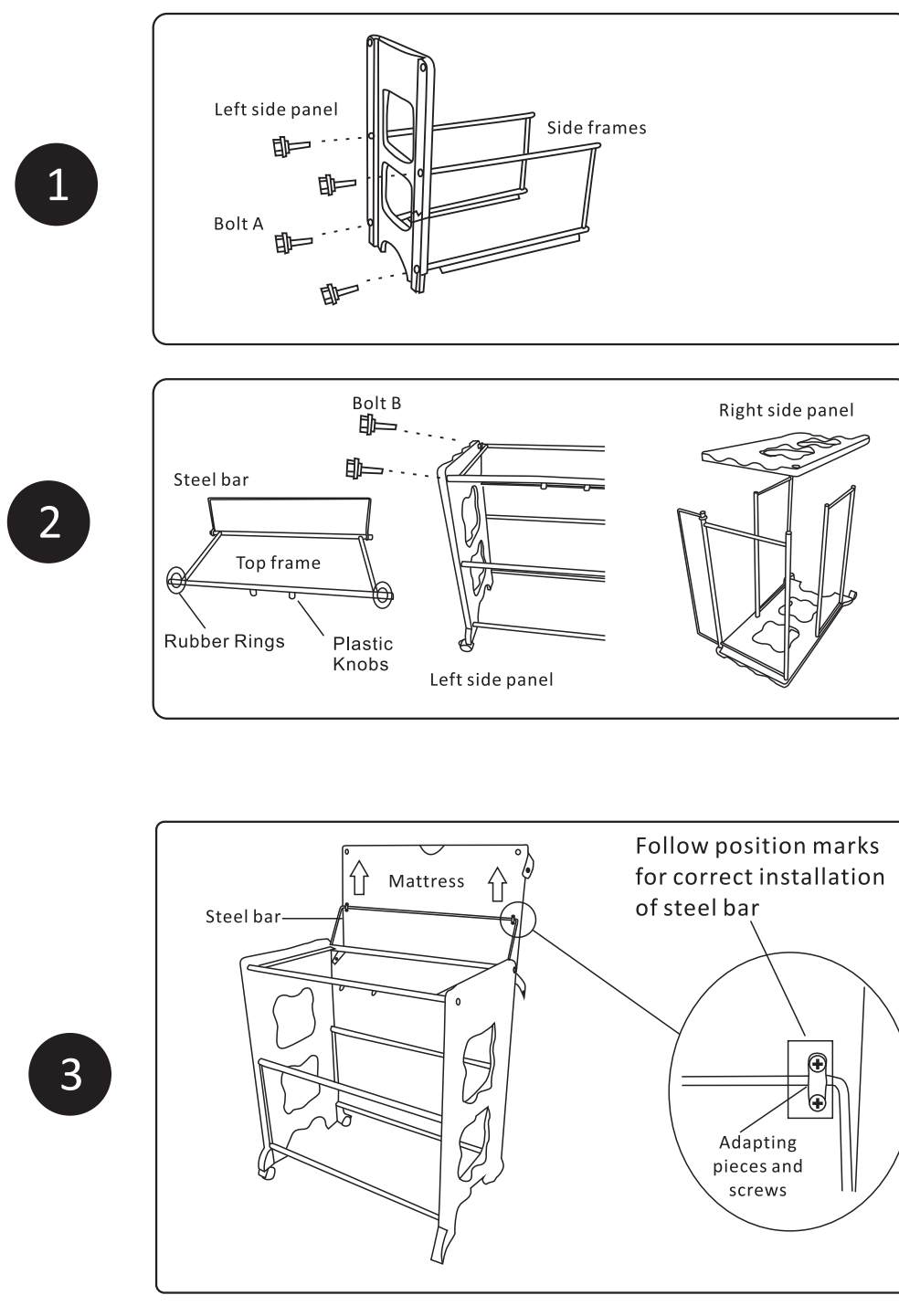
The changing unit's bath tub comes complete with a handy drainage hose (13) which can be attached to the outlet on the underside of the bath. Before placing water in the bath ensure the plug (14) is firmly secured in the plug hole on the inside of the bath.

NOTE: when using the bath, care should be taken that water is of a suitable safe temperature before putting the child in. Do not use the bath without the frame.

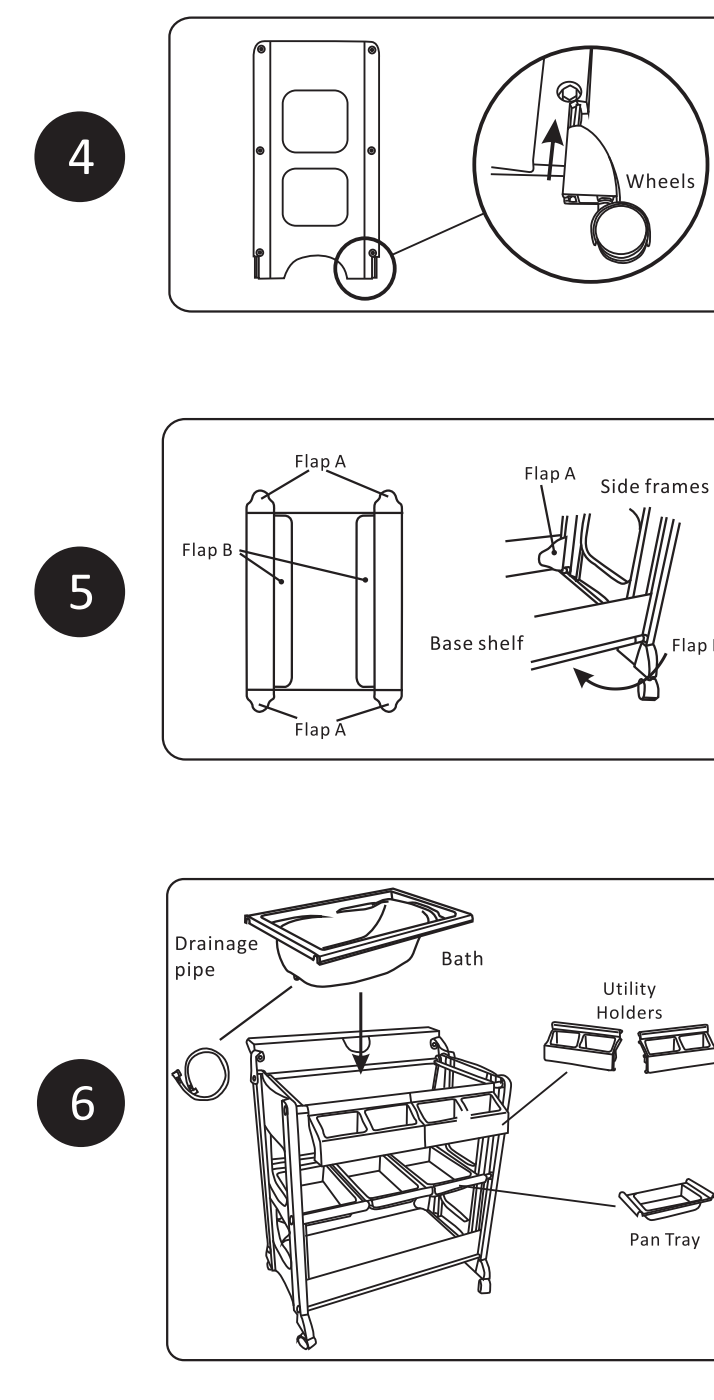
1



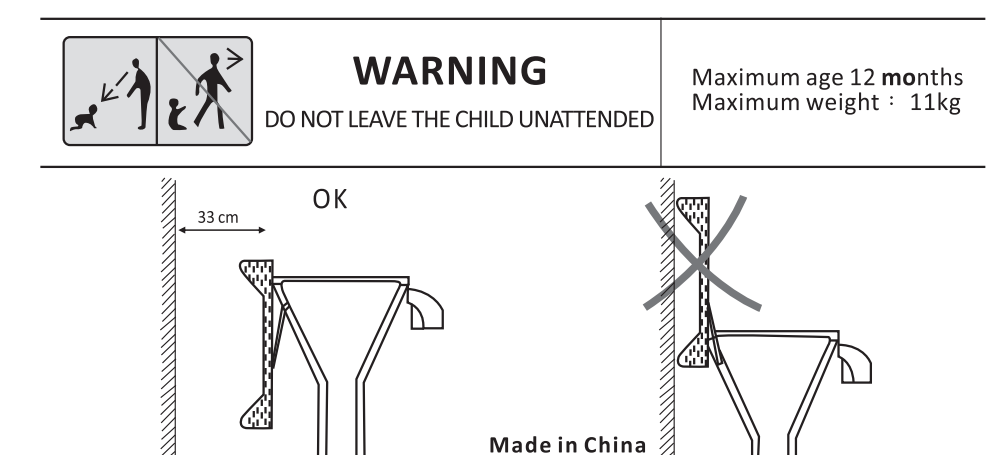
3



4



5



SAFETY HINTS

SAFETY HINTS INSTRUCTIONS OF USE / WARRANTY & GAURANTEE GUIDELINES

- 1. Please read this User Guide thoroughly before using this product. If you are not sure on any point in this guide please consult with the sales person whom sold you this product or contact Chelino on 0118352520. Our offices hours are Monday to Thursday from 9:00 am to 13:00 pm and 14:00 pm to 16:30 pm and Fridays from 9:00 am to 12:00 pm and 14:00 pm to 16:30 pm. Our offices are closed on Saturdays, Sundays, Public holidays and for three weeks during the December/ January festive season. We are situated at 12 Kimberlite Road, Theta Ext, Booyens Reserve, 2091, Johannesburg, Gauteng, RSA.
2. To avoid suffocation or swallowing or any other illness, please keep all packaging which have been removed from parts wrapped in the box away from infants, toddlers, children or any other living beings. Please carefully dispose of the unwanted packaging once this product is fully assembled and you are satisfied with your purchase.
3. Please make sure that you are entirely satisfied with your purchase before removing the warning card attached to this product and before using this product. Once the warning card has been removed and if this product has been used we will not accept the return of this product.
4. If you are not entirely satisfied with this product purchased, please disassemble this product and re-pack it in the original packaging and return it to the store you purchased it from together with the proof of purchase. Depending on the stores policy, you will either be entitled to a replacement product, a credit voucher or a refund. This depends on the stores policies.
5. If you are not entirely satisfied with the assemble of this product or if you are not 100% sure that you have assembled this product correctly, please take this product back to the store you purchased it from and request for some assistance in checking if the assembly is correct or get this product assembled. Depending on the store's policy, there could be an extra charge for this service. Chelino will not take any responsibility if this product is incorrectly assembled thus causing any sort of injury to the user or the child. Alternatively you can contact Chelino directly on 0118352520, our offices hours are Monday to Thursday from 9:00 am to 13:00 pm and 14:00 to 16:30 pm and Fridays from 9:00 am to 12:00 pm and 14:00 pm to 16:30 pm. Our offices are closed on Saturdays, Sundays, Public holidays and for three weeks during the December/ January festive season. There is a charge for the assembly of any product. If you require a 11 Mt Montana DL 057625 rev_01.indd 11 26/02/2014 4:31:06 PM torn, worn or broken parts. Use only those parts and accessories approved with the product.

6

6. Please note, that any repair which will need to be made to this product must be done at the Chelino workshop which is situated at 12 Kimberlite Road, Theta Ext, Booyens Reserve, 2091, Johannesburg, Gauteng, RSA. Our offices hours are Monday to Thursday from 9:00 am to 13:00 pm and 14:00 pm to 16:30 pm and Fridays from 9:00 am to 12:00 pm and 14:00 pm to 16:30 pm. Our offices are closed on Saturdays, Sundays, Public holidays and for three weeks during the December/ January festive season. We do not provide any loan/courtesy products while your product has been sent in for repairs. Chelino requires 7 working days to repair any product, but this lead time may vary depending on the transportation of the product too and from yourself. Once the warranty card is detached from this product and once this product is used even if used once and if there is a fault, this product will need to be sent to the Chelino Workshop for the repair and no refund/credit/exchange will be allowed. Only a Chelino representative can decide whether the product needs to be replaced/credited/exchanged.

7. Once you are satisfied with the assembly of this product and have read this instruction and agree to the terms stated and are ready to use this product, please ensure that all safety locks are engaged to ensure safe use of this product.

8. Please ensure that the child is always securely strapped into this product when using the changer.

9. Never leave the child unattended or without parent/guardian supervision while in this product, as injury could be caused by other parties intentionally or unintentionally. This product can be knocked over and the child can be injured.

10. Never lift this product while the child is in it. This can cause injury to the child.

11. Never move this product around while the child is in this product.

12. Never allow the child to stand in this product. The child can fall out of this product causing injury to him/herself. This can also cause damage to structure of this product.

13. This product is designed for the use of only one child. This product cannot accommodate more than one child.

14. The trays are there for convenience and are not suitable for holding large amounts of liquids (hot or cold) or heavy objects. These areas are also not waterproof or leak proof and spillage can occur.

15. This product is fit to carry a child weighing no more than 14kgs. It is suitable from birth to 12 months.

16. Do not place this product near heating equipment, it will cause danger.

17. Chelino takes no responsibility and will not be held liable for any damage or injury caused by using this product or if this product is used for any other purposes other than its intended purpose.

18. Please note, there are no warranties or guarantee on any fabrics or sponge grip handles used on this product.

19. As this product is used in conjunction with water, parent supervision is essential as the risk of drowning is eminent.



- Stores: ChelinoBaby - Ormonde - JHB
ChelinoBaby - Fourways - JHB
ChelinoBaby - Menlyn - Pretoria
ChelinoBaby - Gateway - Durban
ChelinoBaby - Online - www.chelinobaby.co.za



Importer:
Anchor International
Add: 12 Kimberlite Road, Theta Ext 5 Booyens Reserve, JHB 2091 South Africa.
Tel: +2711 835 2520