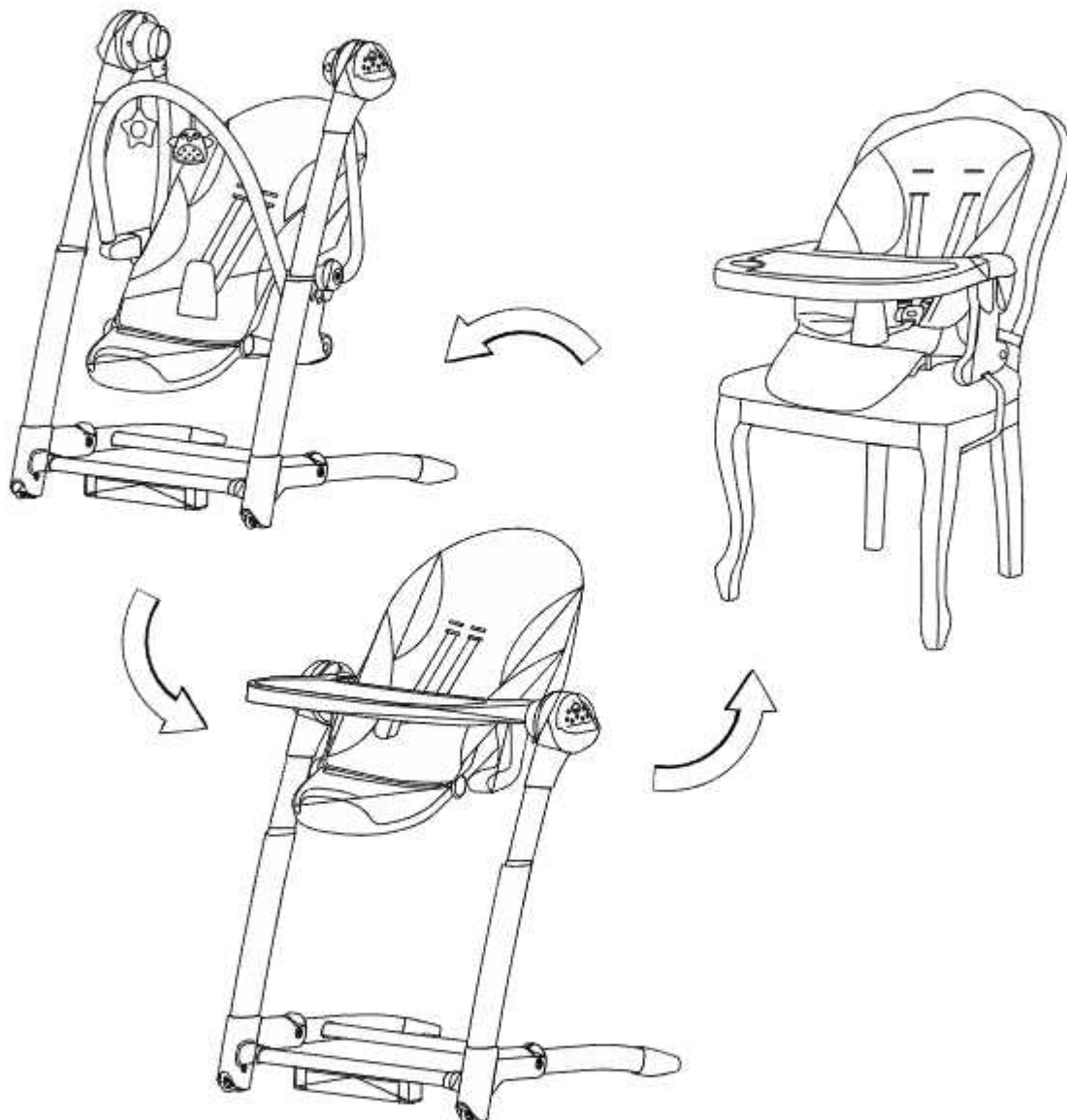




# ROYAL 3 IN 1 SWING & HIGH CHAIR INSTRUCTION MANUAL

**IMPORTANT! KEEP FOR FUTURE REFERENCE.  
INSTRUCTIONS FOR ASSEMBLY AND USE**



Due to variation on the styles and designs of our products, the photographs and illustrations shown in this manual are generic. Therefore products fabric, colour and design may vary from images shown, chelino reserves the right to alter products specifications.

**FOR THE SAFETY OF YOUR CHILD, PLEASE READ THESE INSTRUCTIONS BEFORE USING THE PRODUCTS.**

## baby swing, highchair, booster 3 in 1



baby swing



highchair



booster

### Standard configuration pares

1.Frame



①

2.Seat



②

3.Hanging tube(L+R)



③

4.Footrest



④

5.Front tray

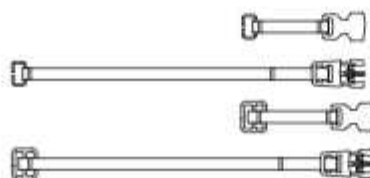


⑤

6.AC-DC Power adapter 7.Belt(Booster use)



⑥



### Selective Parts

8.Toy bar



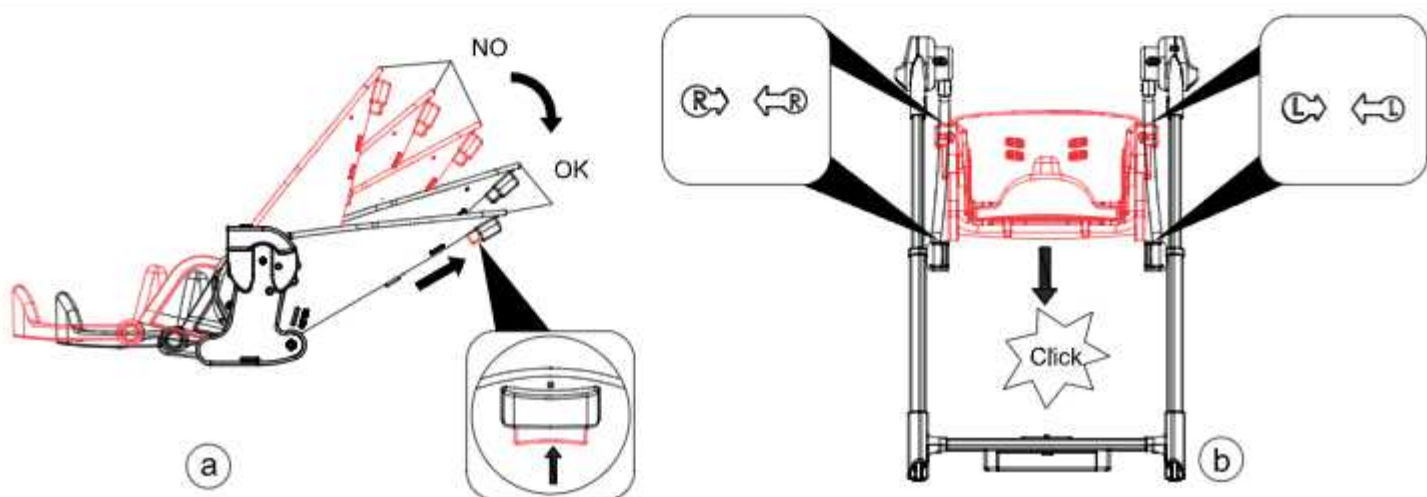
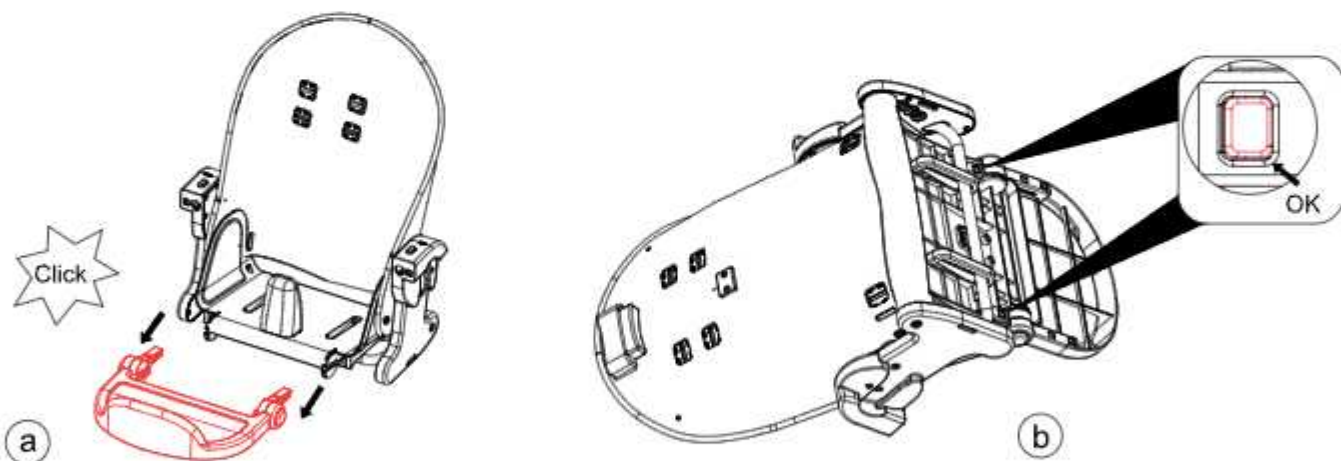
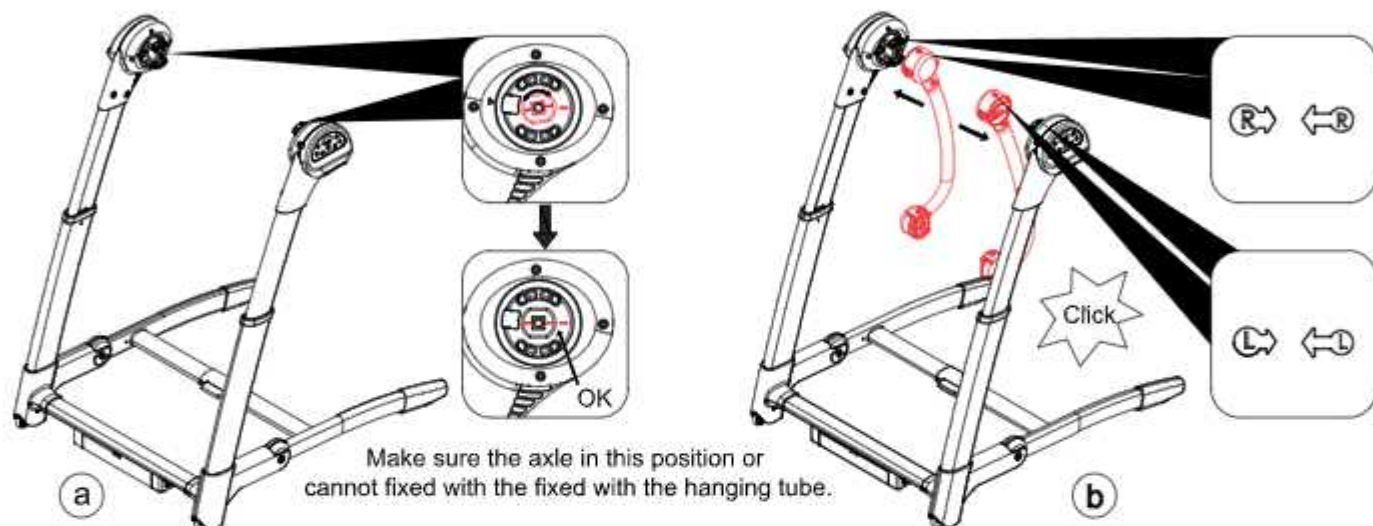
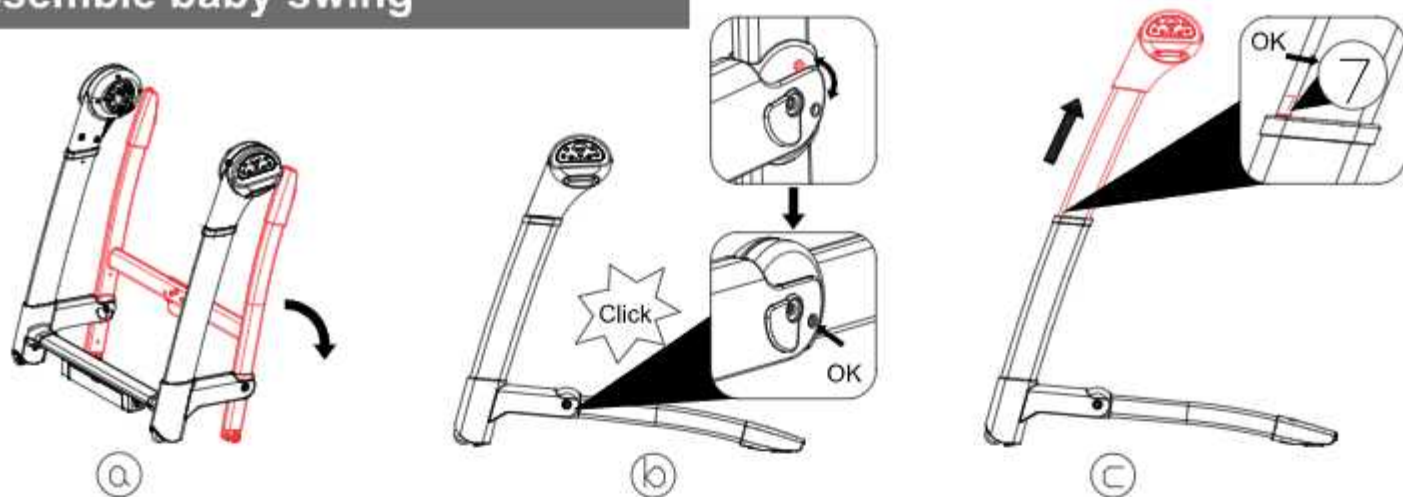
⑦

9.Remote control



⑧

# Assemble baby swing

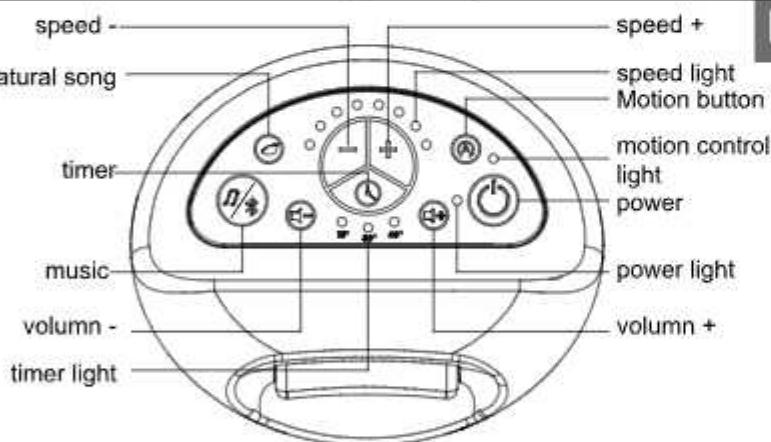
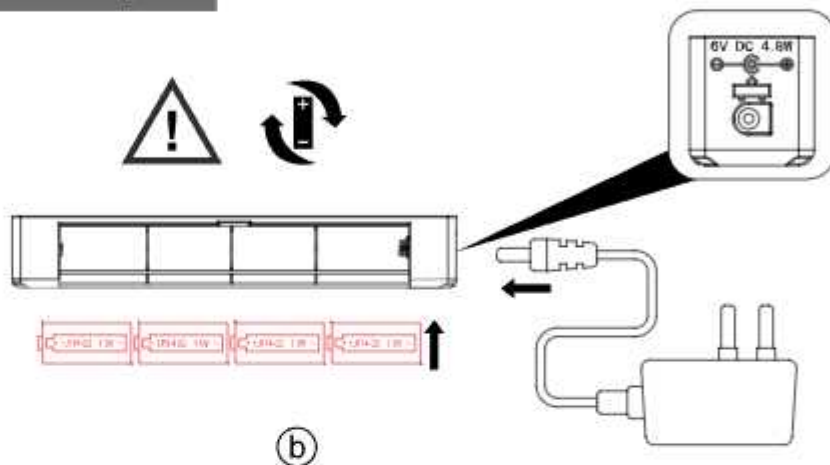




## Install Toy bar (if supply)



## Install batteries or connect adaptor



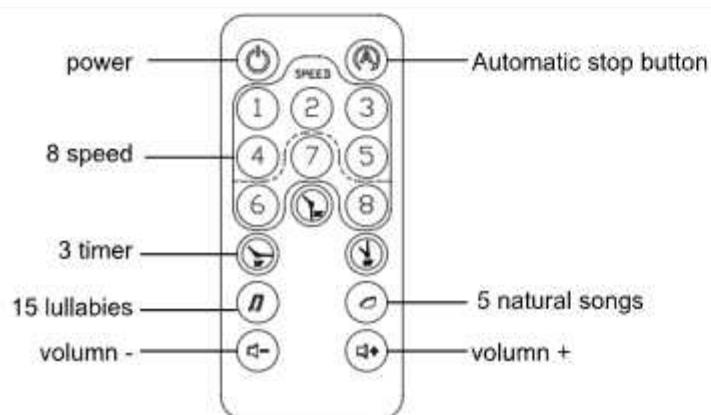
## Key function

### Instruction :

- 1.Speed button: 8 speeds, each speed has a speed light. press the "+" button to start from 1st speed, press again for 2nd speed, press "-" to low down the speed.
- 2.timer button: 3 timers, 15mins, 30mins, 60mins. reach timer, swing stops.
- 3.natural song button: 5 natural songs (press the button to start from first song, press again to move to next one continue. press and hold for 2 seconds to turn off the natural songs)
- 4.song button: 15 songs.
- 5.power button: press button, the swing connects with power, and power light turns light.
- 6.Motion detector: After baby fall asleep. can select this function, motion detector starts swinging when the baby shakes from crying.

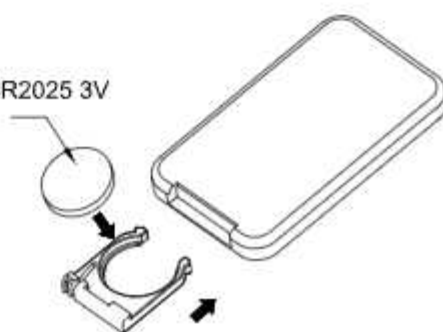
## Bluetooth function (Selective)

1. Long press and hold the music / Bluetooth button for 5 seconds to switch to Bluetooth mode.
2. Open the phone Bluetooth function, search for "LEERJOY" for pairing, hear "ding dong" that pairing success.
3. Paired success, open the phone any music, the swing will play the currently selected music, the music key to switch to the previous song, the natural song key switch to the next song. Phone volume also can control the swing volume.

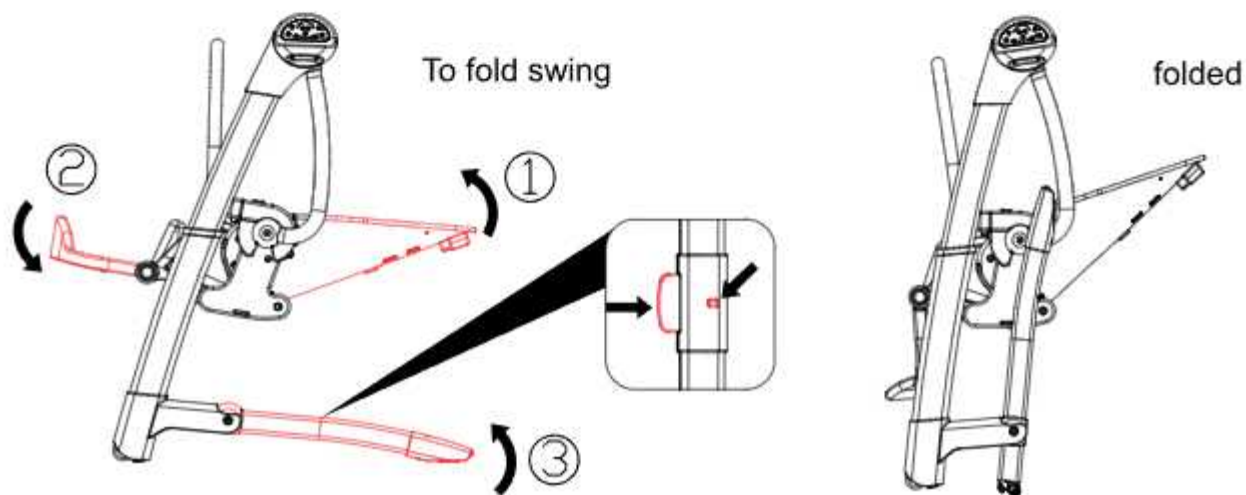
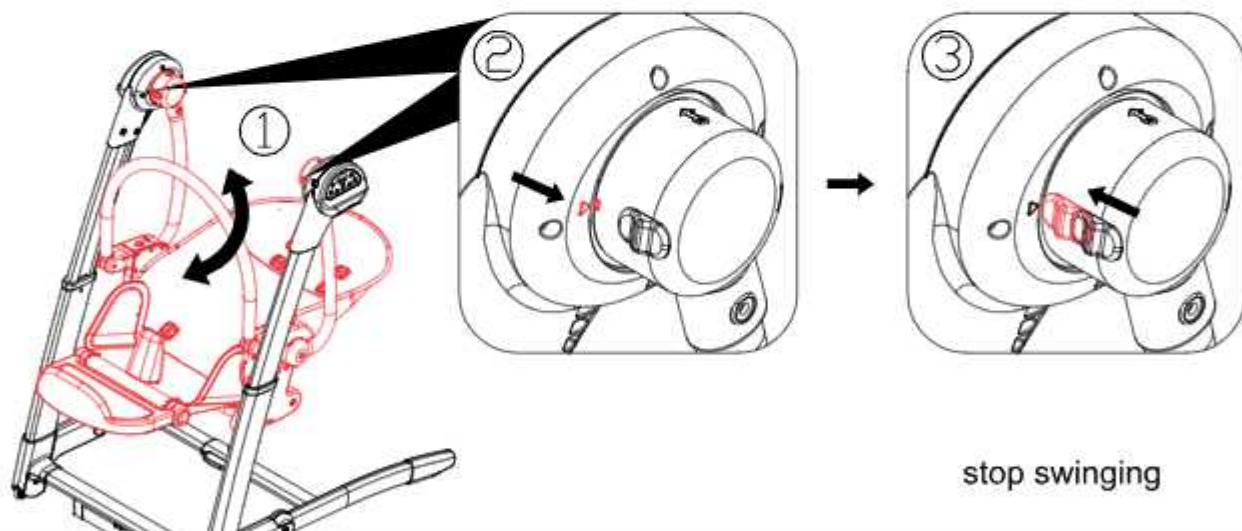
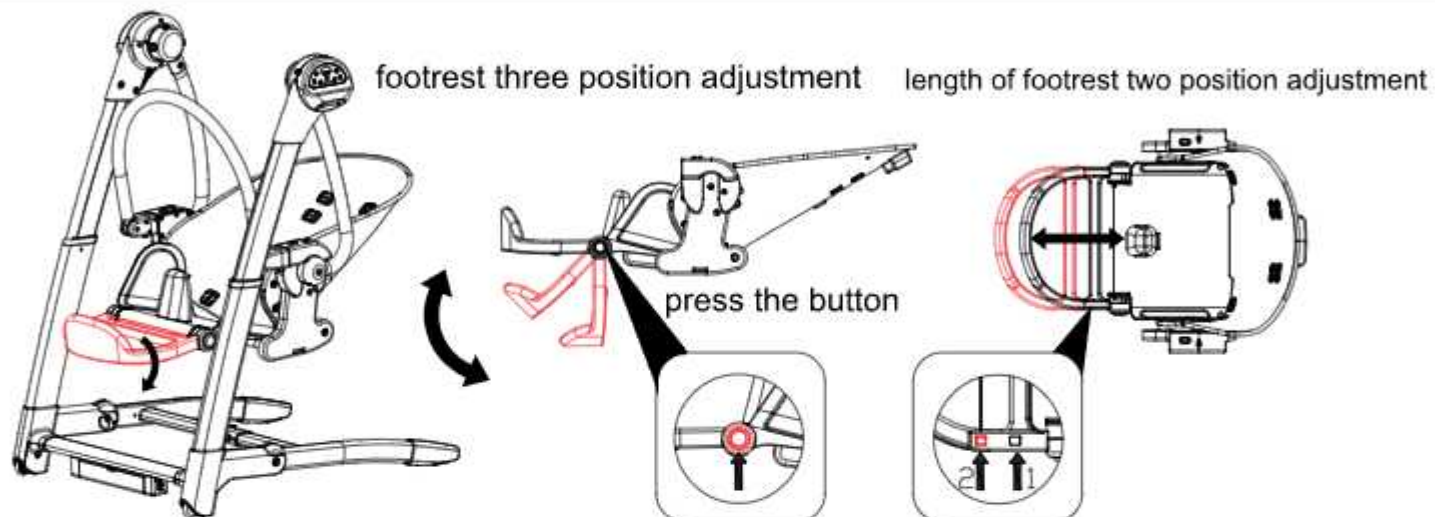
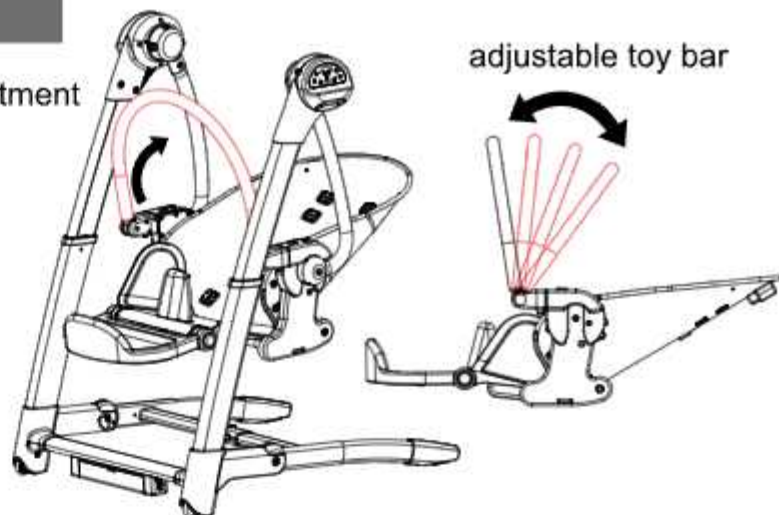
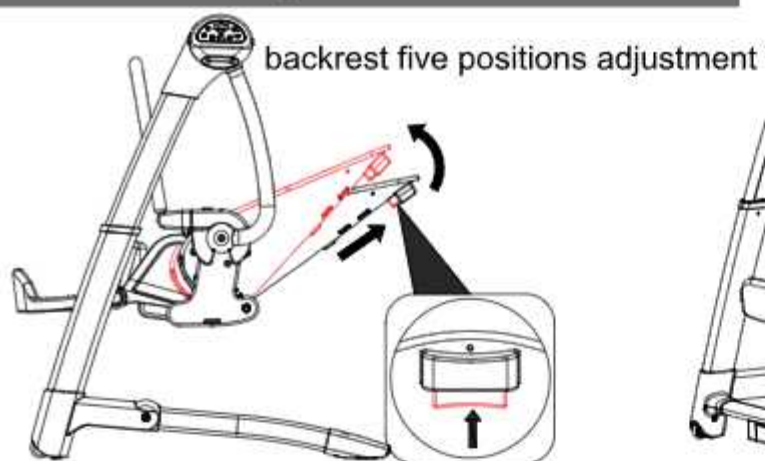


## Remote control function(Selective)

BUTTON BATTERY CR2025 3V  
(including)

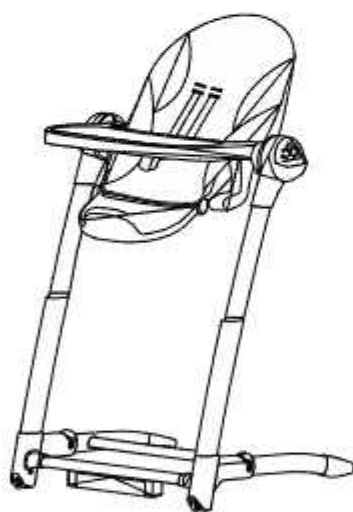
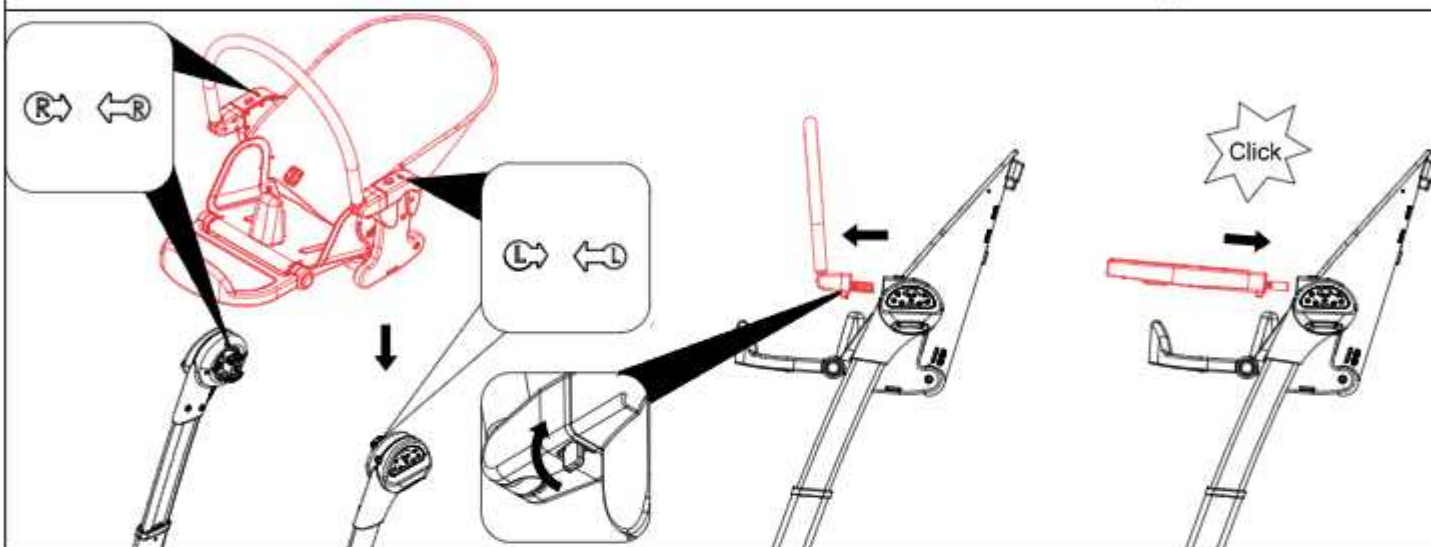
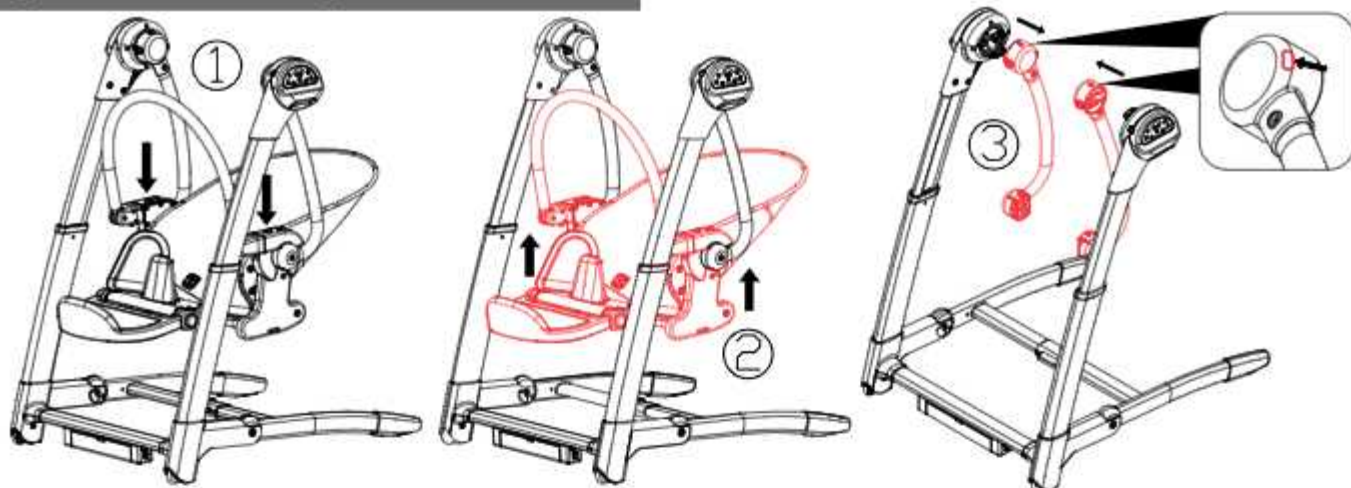


# Use as swing

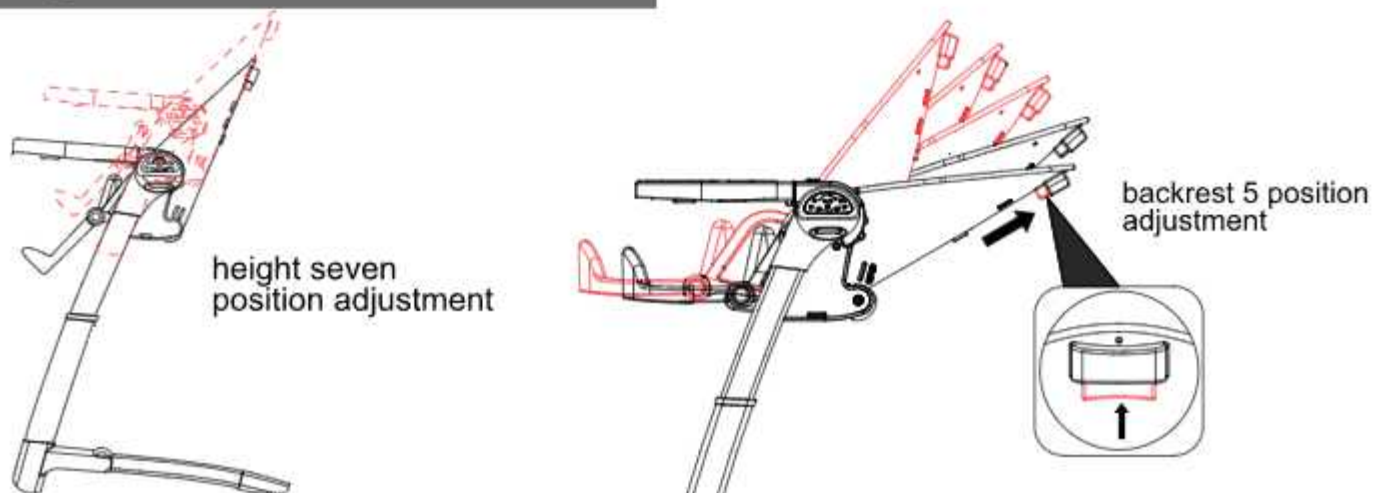




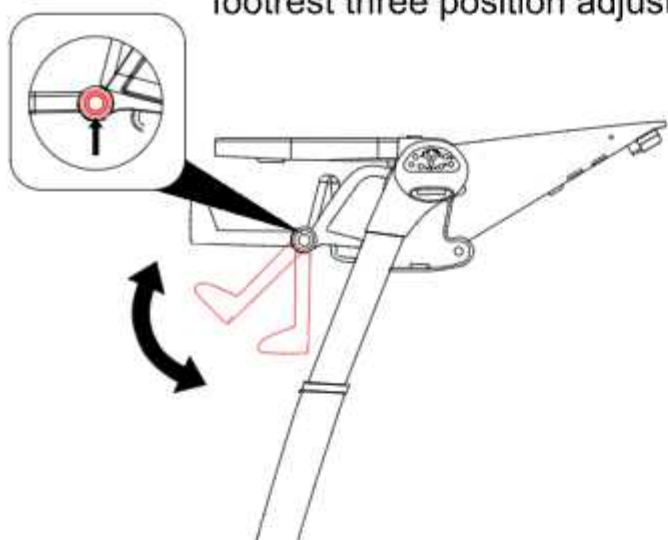
## Swing transfer to high chair



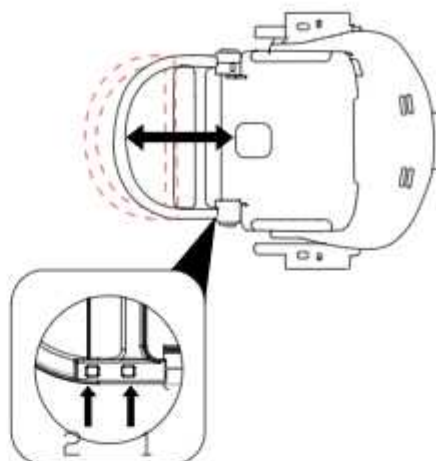
## Use high chair



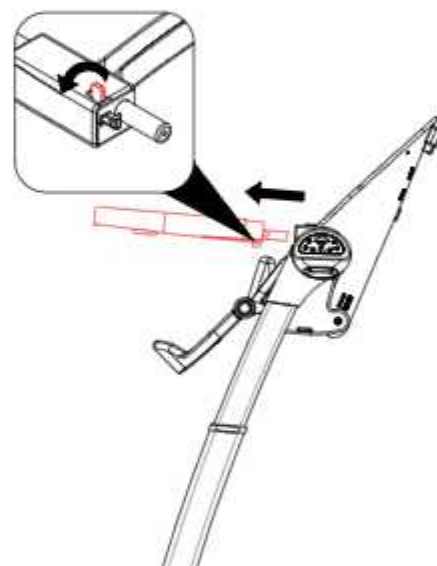
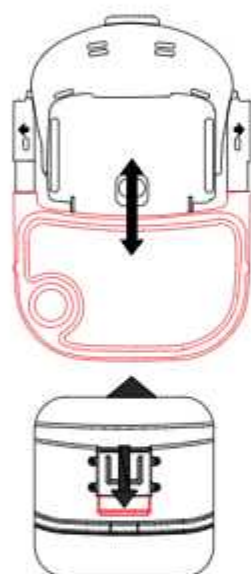
footrest three position adjustment



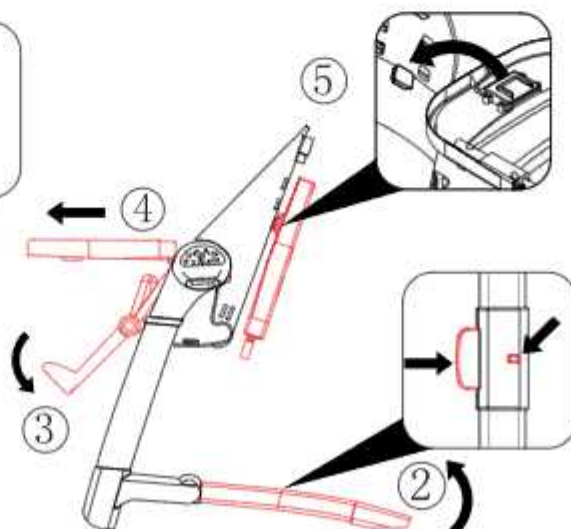
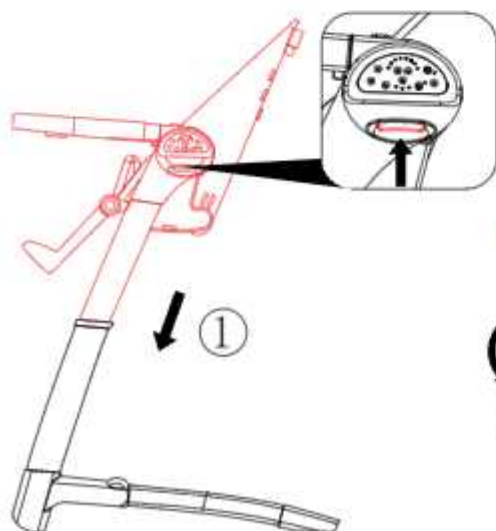
length of footrest two position adjustment



front tray two position adjustment



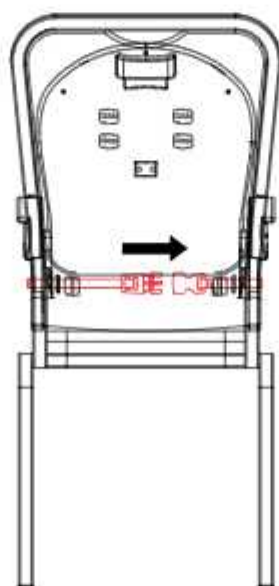
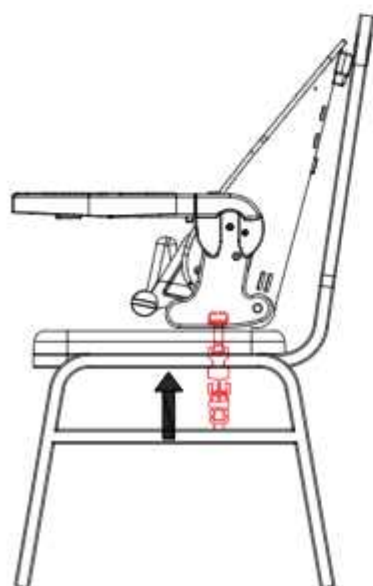
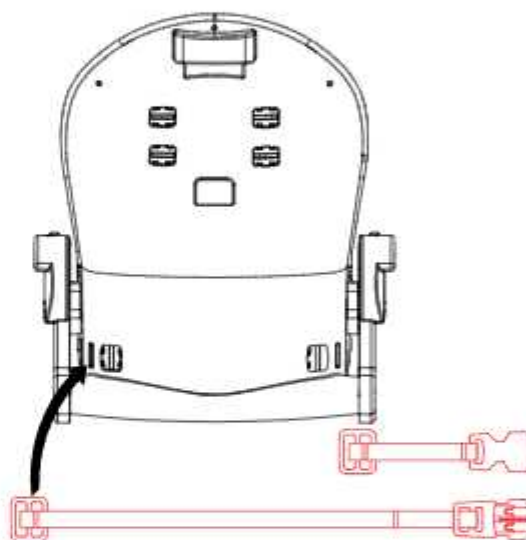
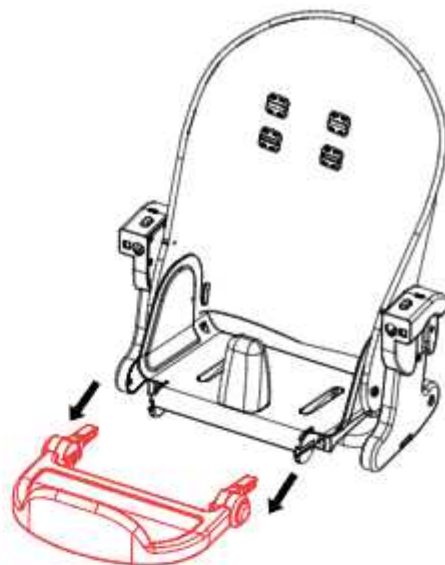
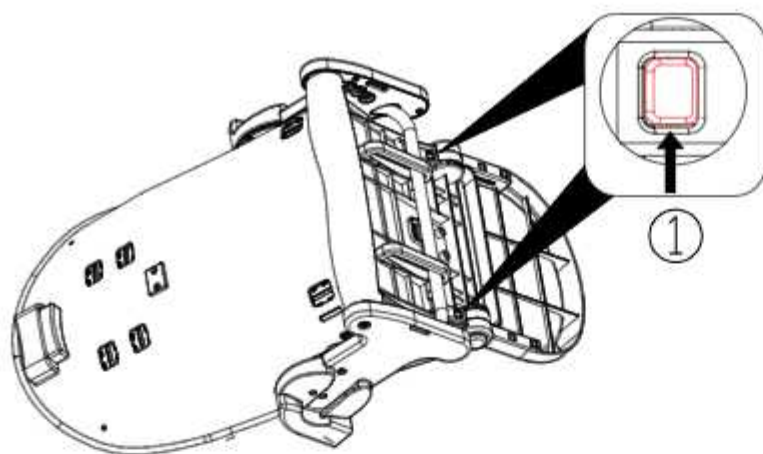
fold highchair



folded

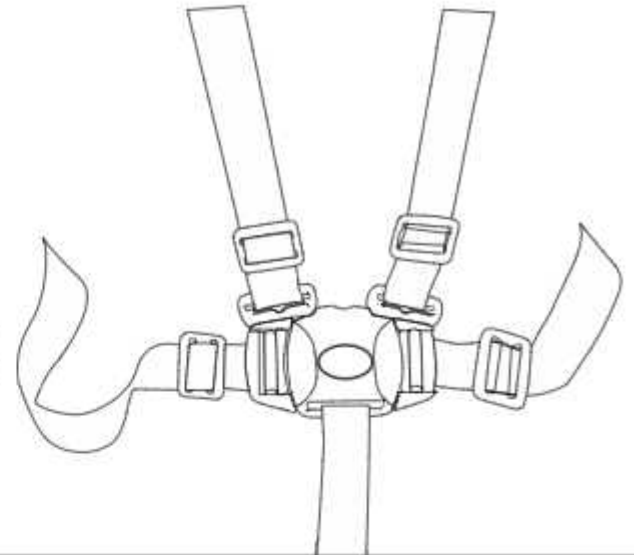
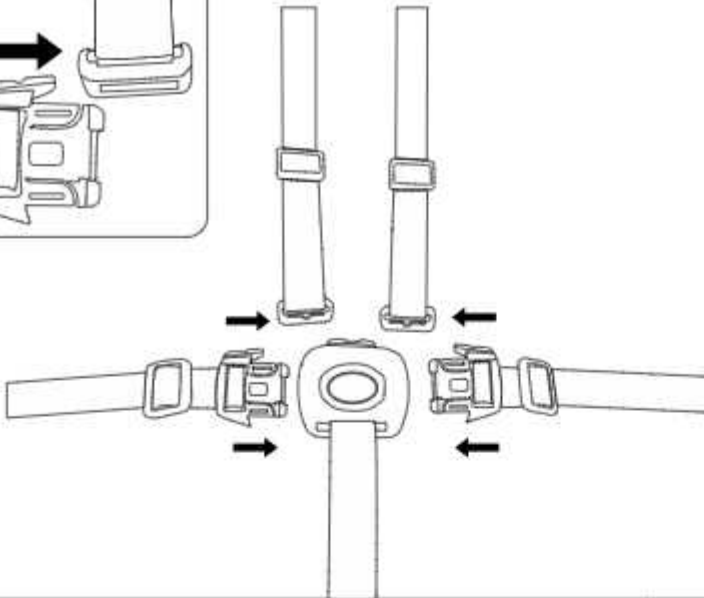
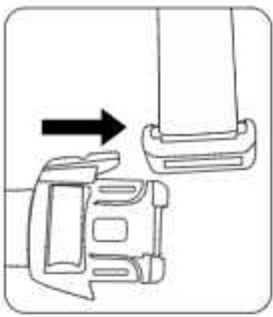


## Swing transfer to booter

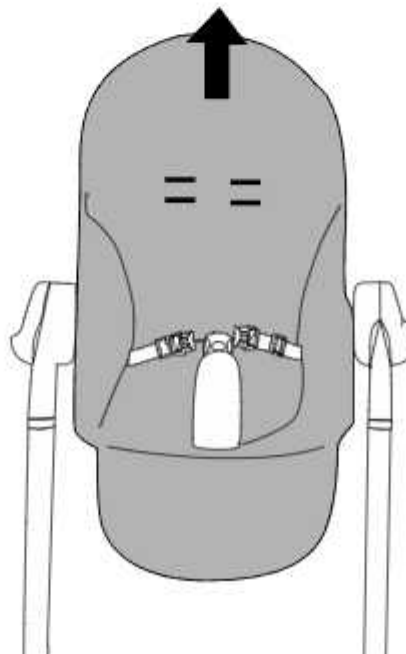
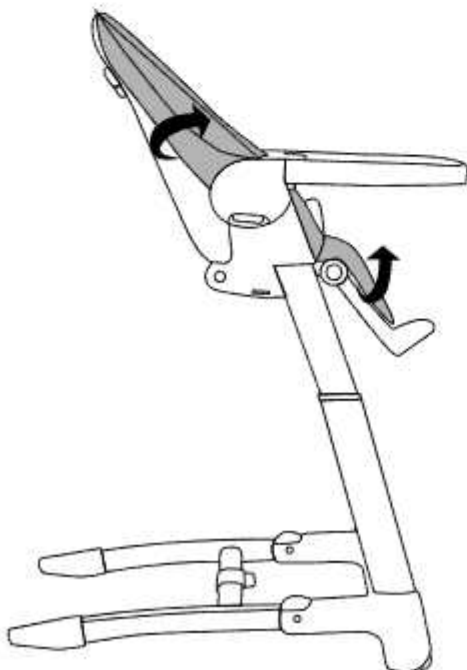
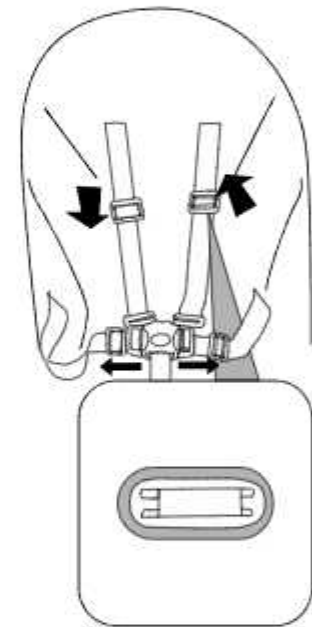
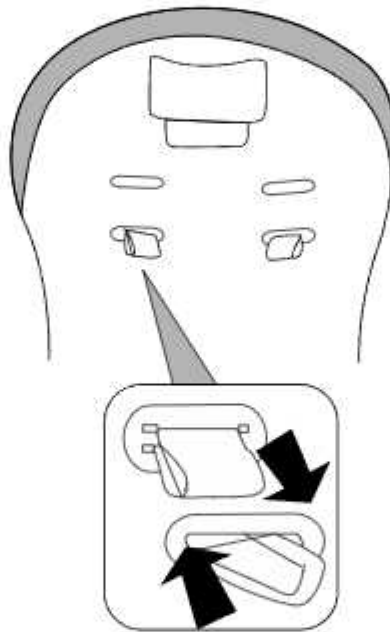
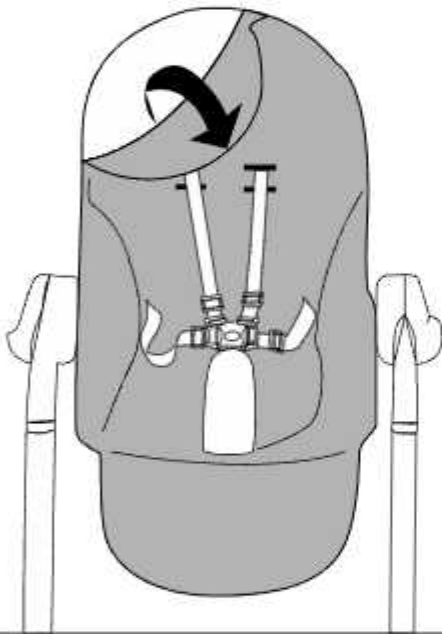




## Safety system using



## Seat pad unfold



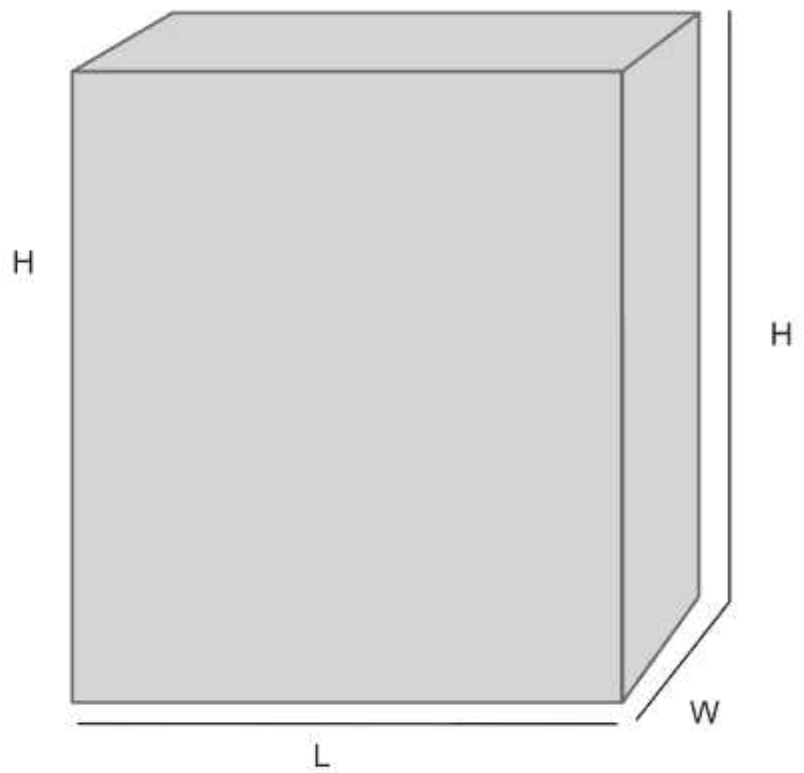


BABY SWING LENGTH	76 CM
BABY SWING WIDTH	55 CM
BABY SWING HEIGHT	90 CM

HIGHCHAIR LENGTH	76 CM
HIGHCHAIR WIDTH	55 CM
HIGHCHAIR HEIGHT	119 CM

BABY SWING WEIGHT 9.8 KGS

HIGHCHAIR WEIGHT 10.7 KGS




---

BOOSTER LENGTH	62 CM
BOOSTER WIDTH	46 CM
BOOSTER HEIGHT	52 CM

---



---

CARTON LENGTH	63 CM
CARTON WIDTH	26 CM
CARTON HEIGHT	70 CM

---

BOOSTER WEIGHT	10.1 KGS
----------------	----------





# **WARNING IMPORTANT:KEEP FOR FUTURE USE**

## **SAFETY HINTS \ INSTRUCTIONS OF USE \ WARRANTY & GAURANTEE GUIDELINES**

1.Please read this User Guide thoroughly before using this product. If you are not sure on any point in this guide please consult with the sales person whom sold you this product or contact Chelino on 0118352520. Our offices hours are Monday to Thursday from 9:00 am to 13:00 pm and 14:00 pm to 16:30 pm and Fridays from 9:00 am to 12:00 pm and 14:00 pm to 16:30 pm. Our offices are closed on Saturdays, Sundays, Public holidays and for three weeks during the December/ January festive season. We are situated at 12 Kimberlite Road, Theta Ext, Booysens Reserve, 2091, Johannesburg, Gauteng, RSA.

2.To avoid suffocation or swallowing or any other illness, please keep all packaging which have been removed from parts wrapped in the box away from infants, toddlers, children or any other living being. Please carefully dispose of the unwanted packaging once this product is fully assembled and you are satisfied with your purchase.

3.Please make sure that you are entirely satisfied with your purchase before removing the warning card attached to this product and before using this product. Once the warning card has been removed and if this product has been used we will not accept the return of this product.

4.If you are not entirely satisfied with this product purchased, please disassemble this product and re-pack it in the original packaging and return it to the store you purchased it from together with the proof of purchase. Depending on the stores policy, you will either be entitled to a replacement product, a credit voucher or a refund. This depends on the stores policies.

5.If you are not entirely satisfied with the assemble of this product or if you are not 100% sure that you have assembled this product correctly, please take this product back to the store you purchased it from and request for some assistance in checking if the assembly is correct or get this product assembled. Depending on the store's policy, there could be an extra charge for this service. Chelino will not take any responsibility if this product is incorrectly assembled thus causing any sort of injury to the user or the child. Alternatively you can contact Chelino directly on 0118352520, our offices hours are Monday to Thursday from 9:00 am to 13:00 pm and 14:00 to 16:30 pm and Fridays from 9:00 am to 12:00 pm and 14:00 pm to 16:30 pm. Our offices are closed on Saturdays, Sundays, Public holidays and for three weeks during the December/ January festive season. There is a charge for the assembly of any product. If you require a Chelino representative to assemble this product you will have to bring this product to our offices which are situated at 12 Kimberlite Road, Theta Ext, Booysens Reserve, 2091, Johannesburg, Gauteng, RSA.

6.Please note, that any repair which will needs to be made to this product must be done at the Chelino workshop which is situated at 12 Kimberlite Road, Theta Ext, Booysens Reserve, 2091, Johannesburg, Gauteng, RSA. Our offices hours are Monday to Thursday from 9:00 am to 13:00 pm and 14:00 pm to 16:30 pm and Fridays from 9:00 am to 12:00 pm and 14:00 pm to 16:30 pm. Our offices are closed on Saturdays, Sundays, Public holidays and for three weeks during the December/ January festive season.We do not provide any loan\courtesy products while your product has been sent in for repairs. Chelino requires 7 working days to repair any product, but this lead time may vary depending on the transportation of the product too and from yourself. Once the warranty card is detached from this product and once this product is used even if used once and if there is a fault, this product will need to be sent to the Chelino Workshop for the repair and no refund\credit\exchange will be allowed. Only a Chelino representative can decide whether the product needs to be replaced\credited\exchanged.

7. Once you are satisfied with the assembly of this product and have read this instruction and agree to the terms stated and are ready to use this product, please ensure that all safety locks are engaged to ensure safe use of this product. Products need to be installed by adult and used under adult's supervision.
8. Please ensure that the child is always securely strapped into this product at all times. The seat belts must be properly adjusted to keep the child secured. If the seat belt is too loose the child could fall out thus causing injury. If the seat belts are too tight it will cause injury and aggravation to the child.
9. Never leave the child unattended or without parent\guardian supervision while in this product, as injury could be caused by other parties intentionally or unintentionally. This product can be knocked over and the child can be injured.
10. Never lift this product while the child is in it. This can cause injury to the child seated in this product.
11. Never allow the child to stand on the seat of this product. This can cause this product to fold and thus causing injury to the child. The child can also fall out of this product causing injury to him\herself. This can also cause damage to structure of this product.
12. To avoid injury ensure that children are kept away when unfolding and folding this product.
13. This product is designed for the use of only one child. This product cannot accommodate more than one child.
14. Take special care when adjusting the backrest if the child is seated in this product. It is preferred to select the desired backrest position before seating the child this product.
15. Front tray is there for convenience and are not suitable for holding large amounts of liquids (hot or cold) or heavy objects. These areas are also not waterproof or leak proof and spillage can occur.
16. Do not place this product near to a window or fire or heating equipment, it will cause danger, and be aware of the risk of open fire and other sources of strong heat, such as electric bar fires, gas fires, etc. in the vicinity of the product.
17. Prevent and do not allow any child to climb into this product or hang onto the handle bars or any other part of this product. This imbalance of weight can cause this product to topple thus causing injury.
18. Stop using product when child attempts to climb out or reach 9kgs (When used as swing function)
19. Never use this product for longer than one hour. It could cause the motor to malfunction. (When used as swing function)
20. It is dangerous to place this product on an elevated surface. Always use on a flat, level floor.
21. This product does not intend for prolonged period of sleep. Should your child need to sleep, then place the child in a suitable cot or bed.
22. Do not use the product without the seat cushion.
23. Discontinue using your product should it become damaged or broken
24. The infant swing shall only be used with the recommended transformer.
25. Do not place your fingers in the mechanisms and make sure the child's limbs are safe from harm when adjusting the chair.
26. Do not leave the high chair exposed to sunlight for long periods of time. Wait until it has cooled down before sitting the child in the chair.
27. When used as swing function, please make sure backrest to stay on level 4-5 position for baby's safety.
28. This product is intended for child able to sit unaided (minimum 6 months) and up to 36 months or a maximum weight of 15kg. (When used as booster function)



## **BABY SWING**

- STOP USING PRODUCT WHEN CHILD ATTEMPTS TO CLIMB OUT OR REACHES 9KG.
- TRANSFORMERS USED WITH THE INFANT SWING ARE TO BE REGULARLY EXAMINED FOR DAMAGE TO THE CORD, PLUG, ENCLOSURE AND OTHER PARTS, AND IN THE EVENT OF SUCH DAMAGE THEY SHALL NOT BE USED.
- THE INFANT SWING SHALL ONLY BE USED WITH THE RECOMMENDED TRANSFORMER.

## **HIGH CHAIR**

- THIS PRODUCT IS FIT TO CARRY A CHILD WEIGHING NO MORE THAN 15KGS. IT IS SUITABLE FROM 6 MONTHS (WHEN CHILD CAN SIT BY HIMSELF) TO 3 YEARS (WHEN USED AS HIGH CHAIR FUNCTION)
- DO NOT USE THE PRODUCT AS A HIGH CHAIR UNTIL THE CHILD CAN SIT UP ALONE. THE TRAY AND ITS ACCESSORIES ARE NOT DESIGNED TO SUPPORT THE CHILD'S WEIGHT. THE TRAY IS NOT DESIGNED TO KEEP THE CHILD IN THE SEAT AND DOES NOT SUBSTITUTE THE SAFETY HARNESS.
- MAKE SURE THE PRODUCT SO THAT THE CHILD IS FAR FROM DANGERS SUCH AS ELECTRICAL WIRING, HEAT SOURCES OF HEAT OR FIRE, SUCH AS GAS HOBS, ELECTRIC HEATERS, ETC.
- THIS PRODUCT IS DESIGNED FOR USE AT TABLE WITHOUT THE TRAY. IT IS SUITABLE FOR CHILDREN. FROM 12 MONTHS OF AGE UP TO A WEIGHT OF 15KG. (WHEN USED AS HIGH CHAIR FUNCTION)

A SINGLE PRODUCT WHICH FOLLOWS THE GROWTH OF YOUR CHILD.

- FROM THE AGE OF 6 MONTHS, A HIGH CHAIR FOR EATING, PLAYING AND RELAXING.
- FROM THE AGE OF 12 MONTHS, A HIGH CHAIR WITHOUT A TRAY, FOR SITTING AT THE TABLE WITH THE ADULTS.

## **BABY BOOSTER**

- THE MINIMUM DIMENSIONS (WIDTH AND DEPTH) OF THE SEAT OF THE CHAIRS FOR WHICH THE CHAIR MOUNTED SEAT IS INTENDED, SHALL BE AT LEAST 20 MM GREATER THAN THE BASE DIMENSIONS (WIDTH AND DEPTH) OF THE CHAIR MOUNTED SEAT MEASURED.
- THE MINIMUM HEIGHT OF THE BACKREST OF THE CHAIRS FOR WHICH THE PRODUCT IS INTENDED, SHALL BE AT LEAST 100 MM GREATER THAN THE HEIGHT OF ANCHORAGE POINTS OF THE CHAIR ATTACHMENT SYSTEM MEASURED.
- ALWAYS USE THE RESTRAINT SYSTEM AND ENSURE IT IS CORRECTLY FITTED.
- ALWAYS USE THE CHAIR ATTACHMENT SYSTEM AND ENSURE IT IS CORRECTLY FITTED BEFORE USE.
- ALWAYS CHECK THE SECURITY AND THE STABILITY OF THE CHAIR MOUNTED SEAT ON THE ADULT CHAIR BEFORE USE.
- DO NOT USE THIS CHAIR MOUNTED SEAT ON STOOLS OR BENCHES.
- THIS PRODUCT IS INTENDED FOR CHILD ABLE TO SIT UNAIDED (MINIMUM 6 MONTHS) AND UP TO 36 MONTHS OR A MAXIMUM WEIGHT OF 15KG. (WHEN USED AS BOOSTER FUNCTION).
- THE ADULT CHAIR WITH THE CHAIR MOUNTED SEAT IS PLACED IN A POSITION WHERE THE CHILD IS NOT ABLE TO USE ITS FEET TO PUSH AGAINST THE TABLE OR ANY OTHER STRUCTURE AS THIS CAN CAUSE THE TIP OVER OF THE ADULT CHAIR SUPPORTING THE CHAIR MOUNTED SEAT.
- NOT TO USE THE CHAIR MOUNTED SEAT IF ANY PART IS BROKEN, TORN OR MISSING.
- NOT TO USE ACCESSORIES OR REPLACEMENT PARTS OTHER THAN THOSE APPROVED BY THE MANUFACTURER.



## **FOR SAFE BATTERY USE**

1. KEEP THE BATTERIES OUT OF CHILDREN'S REACH.
2. ONLY THE RECOMMENDED BATTERIES OR EQUIVALENT ARE TO BE USED, VOLTS AND SIZE.
3. BATTERIES ARE INSERTED WITH THE CORRECT POLARITY.
4. REMOVE EXHAUSTED BATTERIES FROM THE PRODUCT.
5. DO NOT SHORT-CIRCUIT SUPPLY TERMINALS.
6. RECHARGEABLE BATTERIES ARE TO BE REMOVED BEFORE BEING CHARGED.
7. RECHARGEABLE BATTERIES ARE ONLY TO BE CHARGED UNDER ADULT SUPERVISION.  
NON-RECHARGEABLE BATTERIES ARE NOT TO BE RECHARGED.
8. PLEASE ENSURE THAT YOU USE A NEW SET OF BATTERIES. NEVER USE ONE NEW AND ONE OLD BATTERY OR MIXED MATCH BATTERIES. THIS CAN CAUSE THE ELECTRONICS TO MALFUNCTION AND THERE IS NO WARRANTY ON THE ELECTRONIC PARTS. (WHEN USED AS SWING FUNCTION)
9. ANY BATTERY MAY LEAK BATTERY ACID OR EXPLODE IF DISPOSED OF IN FIRE OR AN ATTEMPT IS MADE TO CHARGE A BATTERY NOT INTENDED TO BE RECHARGED.
10. NEVER RECHARGE A CELL OF ONE TYPE IN A RECHARGER MADE FOR A CELL OF ANOTHER TYPE.
11. DISCARD LEAKY BATTERIES IMMEDIATELY. LEAKY BATTERIES CAN CAUSE SKIN BURNS OR OTHER PERSONAL INJURY. WHEN DISCARDING BATTERIES, BE SURE TO DISPOSE OF THEM IN THE PROPER MANNER, ACCORDING TO YOUR STATE AND LOCAL REGULATIONS.
12. ALWAYS REMOVE BATTERIES IF THE PRODUCT IS NOT GOING TO BE USED FOR A MONTH OR MORE. BATTERIES LEFT IN THE UNIT MAY LEAK AND CAUSE DAMAGE.
13. RECOMMENDED TYPE BATTERIES-ALKALINE DISPOSABLES, SIZE C(LR14-1.5V).  
NEVER MIX BATTERY TYPES. CHANGE BATTERIES WHEN PRODUCT CEASES TO OPERATE SATISFACTORILY.

## **MAINTENANCE**

THIS PRODUCT REQUIRES REGULAR MAINTENANCE TO KEEP IT IN GOOD WORKING ORDER. REGULARLY CHECK ALL PARTS OF THE PRODUCT TO ENSURE THAT THEY ARE OPERATING CORRECTLY AND FOR SIGNS OF WEAR OR DAMAGE. ONLY REPLACEMENT PARTS SUPPLIED OR RECOMMENDED BY THE MANUFACTURER SHOULD BE USED.

## **CLEANING**

- REFER TO CARE LABEL ON THE PRODUCT FOR CLEANING INSTRUCTIONS FOR FABRICS. CLEAN METAL OR PLASTIC COMPONENTS WITH MILD DETERGENT AND WARM WATER. NEVER USE ABRASIVE, AMMONIA BASED, BLEACH BASED OR SPIRIT TYPE CLEANERS. ENSURE THE PRODUCT IS FULLY DRY BEFORE USE OR STORAGE.
- CHELINO TAKES NO RESPONSIBILITY AND WILL NOT BE HELD LIABLE FOR ANY DAMAGE OR INJURY CAUSED BY USING THIS PRODUCT OR IF THIS PRODUCT IS USED FOR ANY OTHER PURPOSES OTHER THAN ITS INTENDED PURPOSE.
- PLEASE NOTE, THERE ARE NO WARRANTIES OR GUARANTEE ON ANY FABRICS OR SPONGE GRIP HANDLES USED ON THIS PRODUCT.



**Stores: ChelinoBaby – Ormonde - JHB**

**ChelinoBaby – Fourways – JHB**

**ChelinoBaby – Menlyn – Pretoria**

**ChelinoBaby – Kolonnade-Pretoria**

**ChelinoBaby – Gateway - Durban**

**ChelinoBaby – Online –[www.chelinobaby.co.za](http://www.chelinobaby.co.za)**



**Importer:**

**Anchor International**

**Add: 12 Kimberlite Road , Theta Ext 5 Booysens Reserve , JHB  
2091 South Africa.**

**Tel: +2711 8352520**

**Info: [info@chelino.co.za](mailto:info@chelino.co.za)**