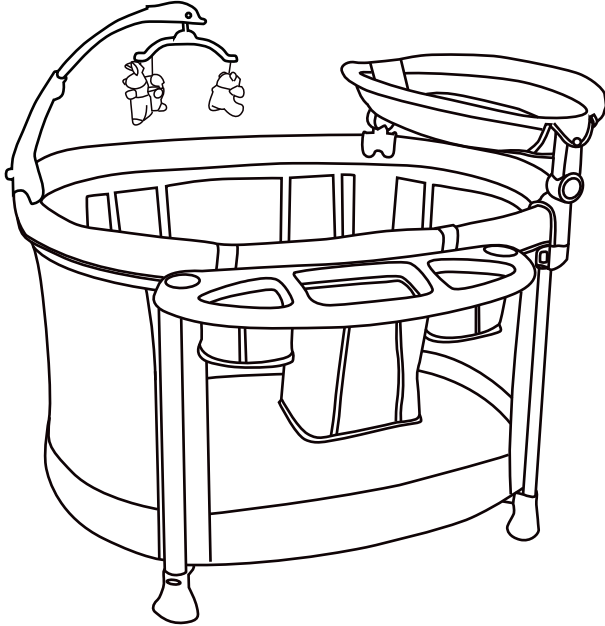


# Chelino

PLATINUM



## DREAMI CAMP COT

---

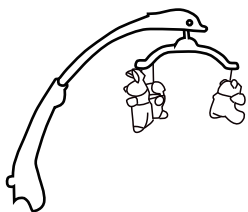
ChelinoBaby Group of Companies.  
No. 12 Kimberlite Road , Theta Ext 5 , Booyens Reserve , JHB , 2091. SA.  
Tel: +2711 8352520

[www.chelinobaby.co.za](http://www.chelinobaby.co.za)

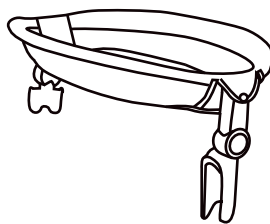


Due to variations on the styles and designs of our products, the photographs and illustration shown in this instruction manual and box are generic, Therefore product fabric, color and design may vary from images shown, Chelino reserves the right to alter product specifications.

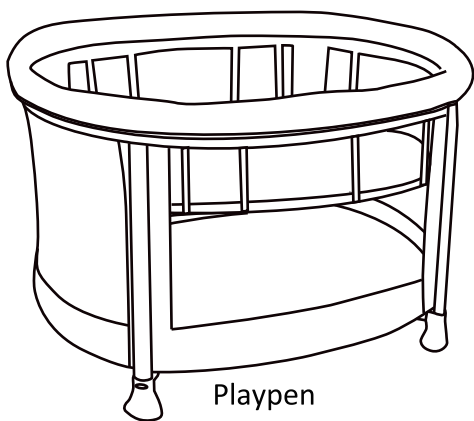
## Parts list



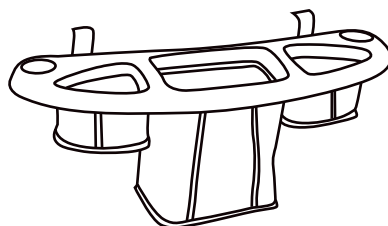
Toy bar



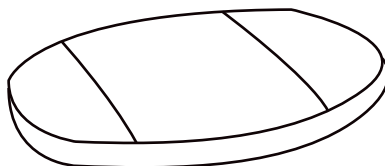
Change table



Playpen



Plastic shelf



Sponge mattress  
sponge mattress as a optional item

**BEFORE ASSEMBLING THIS PLAYARD, READ AND UNDERSTAND THE INSTRUCTIONS. INCORRECT ASSEMBLY MAY MAKE THE PLAYARD UNSAFE.**

**DO NOT USE THIS PLAYARD IF ANY PART IS BROKEN, TORN OR MISSING. KEEP THESE INSTRUCTIONS IN A SAFE PLACE FOR FUTURE REFERENCE**

## **WARNINGS**

Never leave children unattended.

Do not leave anything in the playard ,that will allow the child to stand on, and climb out the playard.

Do not use the playard near naked heat sources, bar heaters, open fires, or exposed flames.

Keep the playard clear of electrical cords, hanging cords and any other cord that could be harmful to the baby.

Keep medication, and small items that a child could choke on away from the playard.

The thickness of the mattress has been specified to ensure that the distance from the top of the mattress to the top of the lowest side or end will always be at least 500 mm. This will reduce the risk of children falling out of the playard.

Portable playard with padded rims should not be used if the covering material has been torn or bitten through.

To prevent falls the bassinet (if supplied) should not be used once a child can sit up.

Before using the playard please check and ensure all top rails are locked securely.

This playard is designed for use with children who cannot climb out of the playard, weigh less than 14 kg, and who are less than 86 cm tall.

The bassinet (if supplied) is designed for use with children who cannot sit up unaided and are not heavier than 9 kg.

The maximum weight of the child to be placed on the change table (if supplied) must not exceed 9 kg.

Do not place more than one child in the playard or bassinet at the same time. Do not try and move the playard while a child is in it.

Do not leave the playard outdoors exposed to direct sunlight.

Keep your fingers clear from corner joints and any moving parts when opening or folding the playard.

This product is not intended for commercial use.

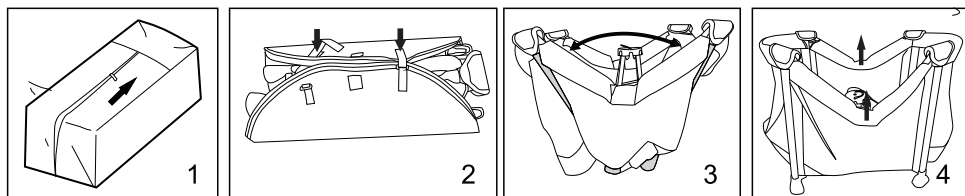
Always keep the playard in a safety condition and position

Remove all unnecessary items from the playard.

Sponge mattress: As this mattress has been vacuum packed, please remove the mattress from the fitted sheet and iron the fitted sheet.

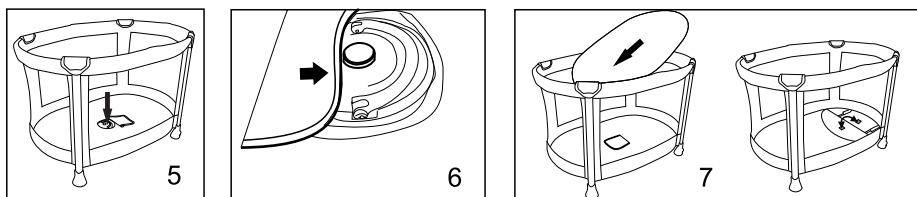
Do not iron the fitted sheet whilst mattress is still in side.

## Assemble Baby Playpen



1. Remove the playard from the carry bag.
2. Take off Velcro at mattress padding, then take out the playpen.
3. Lock all 4 arms into position before pushing the centre lock down. Please note, the centre lock must always be unlocked or lifted while locking.
4. Lifting the 4 arms of the playpen. Once the centre lock is pushed down or locked, the arms will not lock into position.

**WARNING:** Before using playpen, make sure the folding mechanism among long rails and short rail been locked completely, otherwise could hurt childrens.

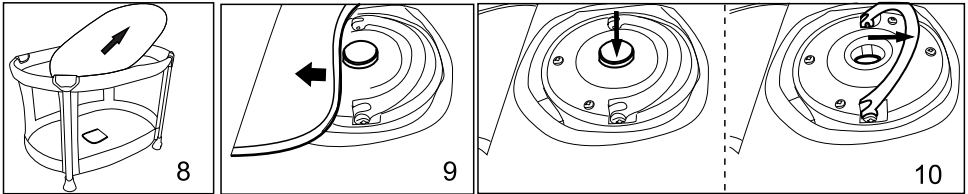


5. Press down the central locking mechanism until it is locked, the red button is popped up, the handle bar is folded, all 4 arms are locked into position, the playard is safe and ready to use.

6. Put fabric cat at the central locking mechanism, and attach Velcro.

7. Place the hardboard mattress at the bottom of the playard to cover the safety lock. The Velcro underneath the hardboard mattress and the Velcro on the surface bed of the playard will align to keep the hardboard.

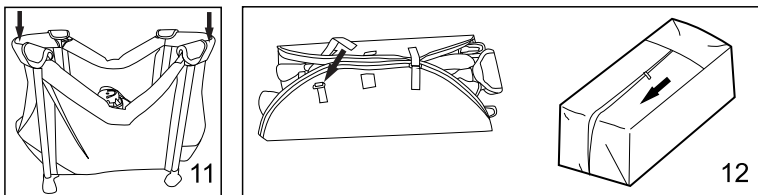
## Fold Baby Playpen



8. Remove hardboard mattress.

9. Expose the safety lock.

10. Press down the red button and lift up handle.



11. Pull the centre base up

12. There are 4 locking button mechanism situated in the middle of the arms. Press and lift these button mechanism to allow the arms to fold. Once all 4 arms are unlocked, pull the centre base upwards, all 4 arms will meet. Use the hardboard mattress to keep the playard close and insert the playard into the storage bag provided for storage or transport.

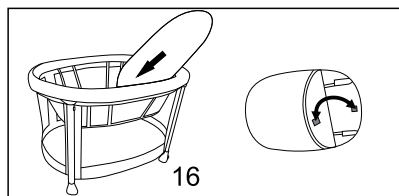
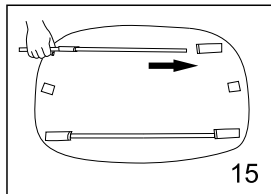
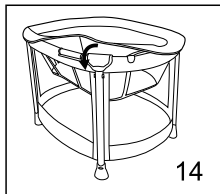
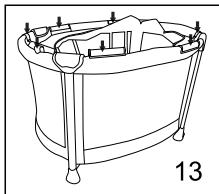
## Assembly & Usage of the second levels

**WARNING:** Please throw off the plastic jackets before assembling.



**REMARK : Please assemble the bassinet according to the illustrations as below. Please pay attention to choose the correct according to your playard bassinet design.**

Remove the hardboard mattress from the playard and put it aside.



13. Put the second level into the playard, and hook the 4 sides of the bassinet onto the long rails and short rails of playard.

ATTENTION: Please distinguish the back side and front side of the second levels by long rails and short rails, and direction of hooks.

**WARNING: Please dispose of all unwanted packaging. As this can be swelled or cause suffocation to children and adults. Once your child is able to sit-up, please remove the bassinet to avoid injury to your child.**

14. Once the bassinet is hooked onto the playard arms, wrap the fabric attached to the bassinet around the playard arms.

15. Insert the poles provided into the bottom section of the bassinet.

16. Place the hardboard mattress on top of the poles.

## **SAFETY HINTS \ INSTRUCTIONS OF USE \ WARRANTY & GAURANTEE GUIDELINES**

1. Please read this User Guide thoroughly before using this product. If you are not sure on any point in this guide please consult with the sales person whom sold you this product or contact Chelino on 0118352520. Our offices hours are Monday to Thursday from 9:00 am to 13:00 pm and 14:00 pm to 16:30 pm and Fridays from 9:00 am to 12:00 pm and 14:00 pm to 16:30 pm. Our offices are closed on Saturdays, Sundays, Public holidays and for three weeks during the December/ January festive season. We are situated at 12 Kimberlite Road, Theta Ext, Booyens Reserve, 2091, Johannesburg, Gauteng, RSA.

2. To avoid suffocation or swallowing or any other illness, please keep all packaging which have been removed from parts wrapped in the box away from infants, toddlers, children or any other living being. Please carefully dispose of the unwanted packaging once this product is fully assembled and you are satisfied with your purchase.

3. Please make sure that you are entirely satisfied with your purchase before removing the warning card attached to this product and before using this product. Once the warning card has been removed and if this product has been used we will not accept the return of this product.

4. If you are not entirely satisfied with this product purchased, please disassemble this product and re-pack it in the original packaging and return it to the store you purchased it from together with the proof of purchase. Depending on the stores policy, you will either be entitled to a replacement product, a credit voucher or a refund. This depends on the stores policies.

5. If you are not entirely satisfied with the assemble of this product or if you are not 100% sure that you have assembled this product correctly, please take this product back to the store you purchased it from and request for some assistance in checking if the assembly is correct or get this product assembled. Depending on the store's policy, there could be an extra charge for this service. Chelino will not take any responsibility if this product is incorrectly assembled thus causing any sort of injury to the user or the child. Alternatively you can contact Chelino directly on 0118352520, our offices hours are Monday to Thursday from 9:00 am to 13:00 pm and 14:00 to 16:30 pm and Fridays from 9:00 am to 12:00 pm and 14:00 pm to 16:30 pm. Our offices are closed on Saturdays, Sundays, Public holidays and for three weeks during the December/ January festive season. There is a charge for the assembly of any product. If you require a Chelino representative to assemble this product you will have to bring this product to our offices which are situated at 12 Kimberlite Road, Theta Ext, Booyens Reserve, 2091, Johannesburg, Gauteng, RSA.

6. Please note, that any repair which will needs to be made to this product must

be done at the Chelino workshop which is situated at 12 Kimberlite Road, Theta Ext, Booyens Reserve, 2091, Johannesburg, Gauteng, RSA. Our offices hours are Monday to Thursday from 9:00 am to 13:00 pm and 14:00 pm to 16:30 pm and Fridays from 9:00 am to 12:00 pm and 14:00 pm to 16:30 pm. Our offices are closed on Saturdays, Sundays, Public holidays and for three weeks during the December/ January festive season. We do not provide any loan\courtesy products while your product has been sent in for repairs. Chelino requires 7 working days to repair any product, but this lead time may vary depending on the transportation of the product too and from yourself. Once the warranty card is detached from this product and once this product is used even if used once and if there is a fault, this product will need to be sent to the Chelino Workshop for the repair and no refund\credit\exchange will be allowed. Only a Chelino representative can decide whether the product needs to be replaced\credited\exchanged.

7.Once you are satisfied with the assembly of this product and have read this instruction and agree to the terms stated and are ready to use this product, please ensure that all safety locks are engaged to ensure safe use of this product.

8.Never leave the child unattended or without parent\guardian supervision while in this product, as injury could be caused by other parties intentionally or unintentionally.

9.Never lift or wheel this product while the child is in it. This can cause this product to fold and thus causing injury to the child seated in this product. When confronted with a staircase, no matter how many steps there are, please use the alternatives or remove the child from this product before using the staircase.

10.This product including rails must be fully erected prior to use. Rails must be locked in the upright position.

11.Make sure latches are secure.

12.Do not use this product if the enclosed or attached assembly cannot be strictly adhered to. Do not place cords, straps or similar items that would harm the child. Ensure that the sides are properly latched or locked in place when this product is in use.

13.Do not suspend strings over this product or attach strings to the toy bar.

14.Do not place pads or other objects inside this product that may assist the child in climbing out.



15. Do not use this product if the child is able to climb out unaided or is taller than 89cm. The recommended period for use of this product is for a child under 14kg or less.

16. Never allow the child to stand on the bassinette of this product. This can cause this product to fall over thus causing injury to the child. If the child is able to lift itself up drop the bassinette to the lower level.

17. Do not place this product near to a window where cords from blinds or drapes can strangle a child.

18. Do not use this product if any parts are broken, torn or missing.

19. Do not use a water mattress in this product.

20. Never use plastic bags or cellophane as a mattress cover. This can cause suffocation.

21. This product is designed for the use of only one child. This product cannot accommodate more than one child.

22. Always engage the brake when you are not using this product. Please note, by applying the brake one still cannot leave the child unattended and without parent supervision. If the brake is not engaged properly the product will move.

23. Nappy changers are designed for children up to the weight of 9kg. Please do not use the changer for a child over 9kg as this will cause damage to the product and cause injury to the child.

24. Prevent and do not allow any child to climb on to any part of this product. This imbalance of weight can cause this product to topple thus causing injury.

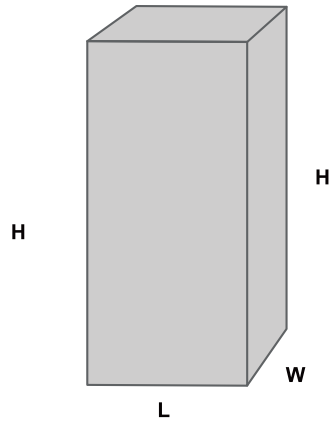
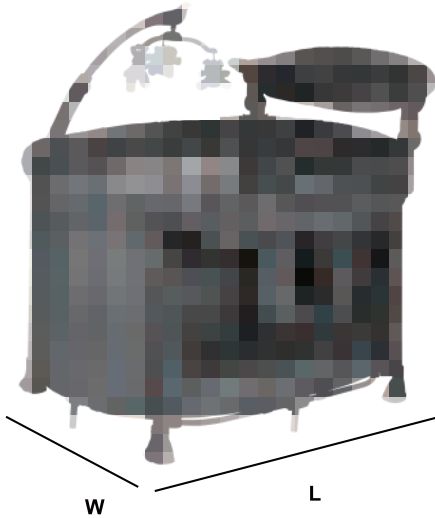
25. Storage compartments are there for convenience and are not suitable for holding large or heavy objects. These areas are also not waterproof or leak proof and spillage can occur.

26. If this product is provided with a mosquito net, please ensure that it is correctly fitted to avoid suffocation.

27. Chelino takes no responsibility and will not be held liable for any damage or injury caused by using this product or if this product is used for any other purposes other than its intended purpose.

28. Please note, there are no warranties or guarantee on any fabric or on the mobile units of this product.

## Dimension Info



---

LENGTH	112 CM	CARTON LENGTH	36 CM
WIDTH	86 CM	CARTON WIDTH	31 CM
HEIGHT	76 CM	CARTON HEIGHT	84 CM

---

WEIGHT 15.2 KGS



# ChelinoBaby®

Stores: ChelinoBaby – Ormonde - JHB

ChelinoBaby – Fourways – JHB

ChelinoBaby – Menlyn – Pretoria

ChelinoBaby – Kolonnade-Pretoria

ChelinoBaby – Gateway - Durban

ChelinoBaby – Online –[www.chelinobaby.co.za](http://www.chelinobaby.co.za)



Imported for :

Chelino Baby Group of Companies

No. 12 Kimberlite Road, Theta Ext 5,

Booyens Reserve, JHB, 2091 S.A.

Tel: +27 11 8352520

Info : [info@chelinoplatinum.co.za](mailto:info@chelinoplatinum.co.za)