

Chelino
PLATINUM



LUNAR 3 IN 1 BABY COLLECTION

Jafim Imports CC T/A Anchor International
No. 12 Kimberlite Road, Theta Ext 5, Booysens Reserve, Johannesburg, 2091,
South Africa
+2711 835 2520
www.chelinobaby.co.za



IMPORTANT NOTES.

- ALWAYS FOLLOW THE MANUFACTURERS INSTRUCTIONS.
READ ALL INSTRUCTIONS CAREFULLY BEFORE ASSEMBLY AND USE OF THIS LUNAR 3 IN 1 BABY COLLECTION
- ALWAYS USE THIS PRODUCT ON A EVEN AND LEVEL SURFACE
- ALWAYS REMOVE THE CHILD WHEN MOVING/ADJUSTING THIS PRODUCT.
- DO NOT LIFT THE PRODUCT WHILST THE CHILD IS IN THE PRODUCT
- ALWAYS USE THE APPROPRIATE HANDLE / LIFTING BAR /MECHANISM TO CLOSE / ADJUST THE HEIGHT / RECLINE THE SEAT
- DO NOT ALLOW CHILDREN TO STAND IN THIS PRODUCT.
- DO NOT HAND ANYTHING OVER THE RAILS / SEAT / CANOPY OF THIS PRODUCT.
- DO NOT EXPOSE THE PRODUCT TO ANY OPEN FLAME / HEATING DEVICE / CORDS OR CURTAINS.

WARNINGS.

- DO NOT LEAVE YOUR CHILD UNATTENDED IN THE HIGH CHAIR AND ROCKER.
- DO NOT LEAVE YOUR CHILD UNATTENDED FOR PROLONG PERIOD OF TIME IN THE CRIB
- THESE PRODUCTS WERE DESIGNED TO BE USED BY ONLY ONE CHILD AT A TIME. DO NOT PLACE MORE THAN ONE CHILD IN THIS PRODUCT AT ANYTIME.
- ENSURE YOUR CHILD OR ANY OTHER PERSON / CHILD IS CLEAR OF ANY MOVING PARTS WHILST ADJUSTING THE PRODUCT TO SUIT YOUR REQUIREMENTS.
- DO NOT USE ANY ACCESSORY OTHER THAN THOSE APPROVED BY CHELINO PLATINUM.
- THE MAXIMUM WEIGHT OF THE CHILD USING THE CRIB IS 9KGS / 6 MONTHS
THE HIGH CHAIR IS 15KGS
THE ROCKER IS 9 KGS

PARTS LIST

CRIBS PARTS LIST.

- ① BASSINET / CRIB
- ② MATTRESS
- ③ LEFT AND RIGHT SIDE FRAMES WITH WHEELS
- ④ FRONT SUPPORT BAR
- ⑤ LEFT AND RIGHT REAR SUPPORT BAR
- ⑥ MOSQUITO NET
- ⑦ 1 X SPANNER
- ⑧ 1 X STAR HEAD SCREWDRIVER
- ⑨ 2 X STAR HEAD SCREWS
- ⑩ 2 X BOLTS & NUTS
- ⑪ CRIB BAG



ASSEMBLING THE CRIB

- ① REMOVE ALL THE PARTS FROM BOX. ENSURE ALL THE CONTENTS OF THE BOX IS REMOVED AND DO NOT DISPOSE OF ANYTHING UNTIL THE CRIB IS FULLY ASSEMBLED.
- ② INSERT THE FRONT SUPPORT BAR INTO THE LEFT AND RIGHT SIDE FRAMES WITH WHEELS AS PER FIGURE 1A



Fig 1A.

③ USE THE 2 SCREWS AND BOLT & NUTS PROVIDED TO FIX THE FRONT SUPPORT BAR TO THE LEFT AND RIGHT SIDE FRAMES. THE SCREWDRIVER AND SPANNER IS PROVIDED TO COMPLETE THE INSTALLATION. PS → THE SCREWS, BOLTS & NUTS NEEDS TO BE INSTALLED ON BOTH SIDES. AS PER FIGURE 1B AND FIGURE 2



Fig 1B



Fig 2

④ JOIN THE LEFT AND RIGHT REAR SUPPORT BAR WITH ONE SCREW PROVIDED. SEE FIGURE 3A



Fig 3A

⑤ INSERT THE LEFT AND RIGHT REAR SUPPORT BARS INTO THE PLASTIC MOULDING OF THE LEFT AND RIGHT SIDE FRAMES WITH WHEELS. ENSURE THAT THE REAR SUPPORT BARS LOCK INTO THE PLASTIC MOULDINGS AND YOU SEE THE HEAD OF THE LOCKING PINS AS PER FIGURE 3B



Fig 3B

⑥ INSIDE THE BASSINET / CRIB YOU WILL FIND 2 BARS WITH STRAP HANDLES. PULL THE STRAPS TO EITHER SIDE OF THE BASSINET / CRIB UNTIL IT LOCKS INTO PLACE (THE BARS MUST GO OVER THE DOME NUTS/CAPS). SEE FIGURE 4, 5 AND 6. THE BASSINET / CRIB MUST BE FULLY ERECTED BEFORE USE.



Fig 4



Fig 5



Fig 6

⑦ ONCE THE BASSINET / CRIB IS FULLY ERECTED, PLACE THE MATTRESS INSIDE.

⑧ TO INSTALL THE BASSINET / CRIB ONTO THE FULLY ASSEMBLED FRAME, ENSURE THAT THE MESH WINDOW IS IN LINE WITH THE FRONT SUPPORT BAR, ALIGN THE ADAPTERS OF THE BASSINET / CRIB WITH THE ADAPTERS ON THE LEFT AND RIGHT SIDE FRAME. ONCE ALIGN CORRECTLY THE BASSINET / CRIB WILL LOCK INTO THE FRAME. PRESS SIMULTANEOUSLY THE GREY BUTTONS ON EITHER SIDE OF THE BASSINET / CRIB ADAPTERS TO REMOVE THE BASSINET / CRIB FROM THE FRAME.

SEE FIGURE 7 / 8



Fig 7



Fig 8

⑨ THE BASSINET / CRIB HAS SIX DIFFERENT HEIGHT POSITIONS. PRESS AND HOLD IN THE GREY CLUTCHES LOCATED ON THE LEFT AND RIGHT SIDE FRAMES TO SELECT YOUR PREFERRED HEIGHT POSITION, SEE FIGURE 9



Fig 9

THE BASSINET / CRIB CAN BE USED ON AN INCLINE AS PER FIGURE 10.



Fig 10

THE HEAD OF THE CHILD SHOULD ALWAYS BE POSITIONED ON THE HIGHEST SIDE.

THE INCLINE SHOULD NOT BE MORE THAN ONE DIFFERENT HEIGHT POSITION. EXAMPLE →LEFT SIDE ON 1ST POSITION AND RIGHT SIDE ON 2ND POSITION

WHEELS, LIFT THE GREY LEVER EITHER UPWARDS OR DOWNWARDS ON BOTH WHEELS TO LOCK THE WHEEL. SEE FIGURE 11 PLACE THE LEVER IN THE MIDDLE TO ALLOW THE WHEEL TO MOVE SEE FIGURE 12 ALWAYS LOCK THE WHEEL WHEN BABY IS IN THE BASSINET / CRIB



Fig 11

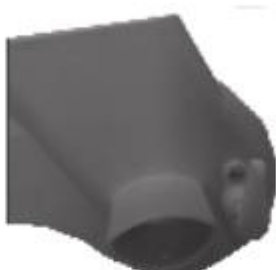


Fig 12

11. TO DROP THE SIDE RAIL. UNZIP THE MESH ON BOTH SIDES. PRESS THE GREY BUTTONS ON BOTH SIDES AND PUSH THE BAR INWARDS. TAKE THE FLAP AND WRAP IT UNDERNEATH THE BASSINET / CRIB. SEE FIGURE 13 AND 14.



Fig 13



Fig 14

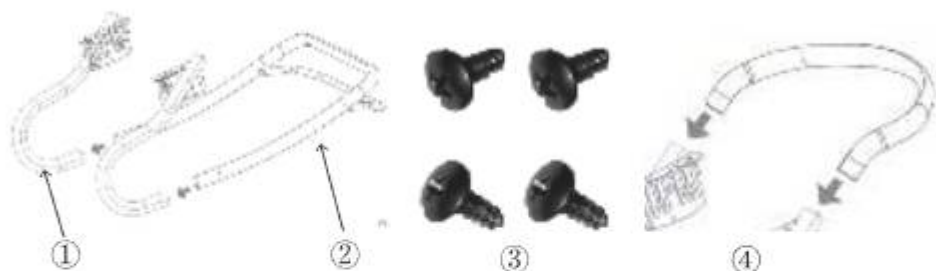
12. THE MOSQUITO NET CAN BE USED BY COVERING THE TOP OF THE BASSINET / CRIB. THE ZIPPER IN THE MIDDLE ALLOWS EASY ACCESS TO BABY.



PARTS LISTS

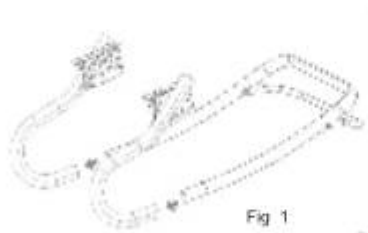
ROCKER PARTS LIST

- ① TOP FRAME WITH ADAPTERS
- ② BOTTOM FRAME WITH BRAKE BAR
- ③ 4 X STAR HEADER SCREWS
- ④ U SHAPED BAR

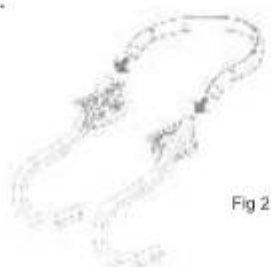


ASSEMBLING THE ROCKER

- ① CONNECT THE TOP FRAME WITH ADAPTERS TO THE BOTTOM FRAME WITH THE BRAKE BAR AS SHOW IN FIGURE 1, WITH THE SCREWS PROVIDED



- ② CONNECT THE U SHAPE BAR TO THE TOP FRAME BAR WITH THE SCREWS PROVIDED. SEE FIGURE 2



③ THE LUNAR STROLLER SEAT AND OR LUNAR CARRY COT CAN BE USED ON THE ROCKER FRAME.



THIS SEATING POSITION IS CORRECT



THIS TWO SEATING POSITION ARE NOT CORRECT



PARTS LISTS

HIGH CHAIR PARTS LIST

- ① REAR SUPPORT LEG
- ② U-SHAPE FRAME
- ③ FRONT SUPPORT BAR
- ④ 4 STARHEAD SCREWS
- ⑤ FEEDING TRAY WITH WASHABLE DETACHABLE TRAY CROTCH GUARD
- ⑥ LEFT AND RIGHT SIDE ARMS WHICH WAS USED WHEN ASSEMBLING THE BASSINET/ CRIB
- ⑦ CROTCH GUARD



①



②



③



④



⑤



⑥



⑦

- IF YOU ARE PLANNING TO USE THE FEEDING CHAIR, THIS MEANS YOUR BABY HAS OUT GROWN THE BASSINET / CRIB
- REMOVE THE BASSINET / CRIB SECTION, UNDO THE FRONT AND REAR SUPPORT LEGS AND PACK AWAY TOGETHER WITH THE MATTRESS AND MOSQUITO NET.
- DO NOT LOOSE ANY OF THE PARTS AND STORE IN A COOL DRY PLACE THE LEFT AND RIGHT SIDE FRAME WITH WHEELS WILL BE NEEDED TO COMPLETE THE ASSEMBLY OF THE HIGH CHAIR

ASSEMBLING THE HIGH CHAIR

① INSERT THE FRONT SUPPORT BAR INTO THE LEFT AND RIGHT SIDE FRAMES WITH WHEELS AS PER FIGURE 1A



Fig 1A

② USE THE 2 SCREWS AND BOLTS & NUTS PROVIDED TO FIX THE FRONT SUPPORT BAR TO THE LEFT AND RIGHT SIDE FRAMES. THE SCREWDRIVER AND SPANNER IS PROVIDED TO COMPLETE THE INSTALLATION. PSTM THE SCREWS AND BOLTS & NUTS NEEDS TO BE INSTALLED ON BOTH SIDES AS PER FIGURE 1B



Fig 1B

③ INSERT THE REAR SUPPORT BARS INTO THE PLASTIC MOULDINGS OF THE LEFT AND RIGHT SIDE FRAMES WITH WHEELS. ENSURE THAT THE REAR SUPPORT BARS LOCKS INTO THE PLASTIC MOULDING AND YOU SEE THE HEAD OF THE LOCKING PINS AS PER FIGURE 3



Fig 3

- ④ INSERT THE U-SHAPE FRAME INTO THE HOLES ON EACH SIDE OF THE PLASTIC RECEIVER MouldING AS ARROW SHOWN . AND ATTACH THEM WITH SCREWS PROVIDED AS ARROW SHOWN.



- ⑤ USE THE SCREWS PROVIDED TO ATTACH THE CROTCH GUARD UNDERNEATH THE FEEDING TRAY.



- ⑥ UNZIP THE CANOPY OFF THE LUNAR STROLLER SEAT. REMOVE THE FRONT BAR AND CLIP ON THE FEEDING TRAY. THE STROLLER SEAT WILL FIT ONTO THE ADAPTERS WHICH ARE LOCATED ON THE TOP OF THE SIDE ARM FRAME. ALWAYS HAVE THE SEAT IN THE FORWARD FACING POSITION . SEE FIG AS BELOW FOR THE CORRECT AND INCORRECT DIRECTION

WARNING : THE INCORRECT SEAT POSITION MAY CAUSE BABY SERIOUS INJURY.



- ⑦ THE LUNAR STROLLER SEAT CAN BE USED AS THE SEAT WITH THE FEEDING CHAIR FRAME.

SAFETY HINTS \ INSTRUCTIONS OF USE \ WARRANTY & GAURANTEE GUIDELINES

1. Please read this User Guide thoroughly before using this product. If you are not sure on any point in this guide please consult with the sales person whom sold you this product or contact Chelino on 0118352520. Our offices hours are Monday to Thursday from 9:00 am to 13:00 pm and 14:00 pm to 16:30 pm and Fridays from 9:00 am to 12:00 pm and 14:00 pm to 16:30 pm. Our offices are closed on Saturdays, Sundays, Public holidays and for three weeks during the December/ January festive season. We are situated at 12 Kimberlite Road, Theta Ext, Booyens Reserve, 2091, Johannesburg, Gauteng, RSA.
2. To avoid suffocation or swallowing or any other illness, please keep all packaging which have been removed from parts wrapped in the box away from infants, toddlers, children or any other living being. Please carefully dispose of the unwanted packaging once this product is fully assembled and you are satisfied with your purchase.
3. Please make sure that you are entirely satisfied with your purchase before removing the warning card attached to this product and before using this product. Once the warning card has been removed and if this product has been used we will not accept the return of this product.
4. If you are not entirely satisfied with this product purchased, please disassemble this product and re-pack it in the original packaging and return it to the store you purchased it from together with the proof of purchase. Depending on the stores policy, you will either be entitled to a replacement product, a credit voucher or a refund. This depends on the stores policies.
5. If you are not entirely satisfied with the assemble of this product or if you are not 100% sure that you have assembled this product correctly, please take this product back to the store you purchased it from and request for some assistance in checking if the assembly is correct or get this product assembled. Depending on the store's policy, there could be an extra charge for this service. Chelino will not take any responsibility if this product is incorrectly assembled thus causing any sort of injury to the user or the child. Alternatively you can contact Chelino directly on 0118352520, our offices hours are Monday to

Thursday from 9:00 am to 13:00 pm and 14:00 to 16:30 pm and Fridays from 9:00 am to 12:00 pm and 14:00 pm to 16:30 pm. Our offices are closed on Saturdays, Sundays, Public holidays and for three weeks during the December/ January festive season. There is a charge for the assembly of any product. If you require a Chelino representative to assemble this product you will have to bring this product to our offices which are situated at 12 Kimberlite Road, Theta Ext, Booyens Reserve, 2091, Johannesburg, Gauteng, RSA.

6. Please note, that any repair which will need to be made to this product must be done at the Chelino workshop which is situated at 12 Kimberlite Road, Theta Ext, Booyens Reserve, 2091, Johannesburg, Gauteng, RSA. Our offices hours are Monday to Thursday from 9:00 am to 13:00 pm and 14:00 pm to 16:30 pm and Fridays from 9:00 am to 12:00 pm and 14:00 pm to 16:30 pm. Our offices are closed on Saturdays, Sundays, Public holidays and for three weeks during the December/ January festive season. We do not provide any loan/courtesy products while your product has been sent in for repairs. Chelino requires 7 working days to repair any product, but this lead time may vary depending on the transportation of the product too and from yourself. Once the warranty card is detached from this product and once this product is used even if used once and if there is a fault, this product will need to be sent to the Chelino Workshop for the repair and no refund/credit/exchange will be allowed. Only a Chelino representative can decide whether the product needs to be replaced/credited/exchanged.
7. Once you are satisfied with the assembly of this product and have read this instruction and agree to the terms stated and are ready to use this product, please ensure that all safety locks are engaged to ensure safe use of this product.
8. Never leave the child unattended or without parent/guardian supervision while in this product, as injury could be caused by other parties intentionally or unintentionally.
9. Never lift or wheel this product while the child is in it. This can cause this product to fold and thus causing injury to the child seated in this product. When confronted with a staircase, no matter how many steps there are,

please use the alternatives or remove the child from this product before using the staircase.

10. This product including rails must be fully erected prior to use. Rails must be locked in the upright position.
11. Make sure latches are secure.
12. Do not use this product if the enclosed or attached assembly cannot be strictly adhered to. Do not place cords, straps or similar items that would harm the child. Ensure that the sides are properly latched or locked in place when this product is in use.
13. Do not suspend strings over this product or attach strings to the toy bar.
14. Do not place pads or other objects inside this product that may assist the child in climbing out.
15. This product is intended for use for babies aged between 0 and 6 months, weighing up to a maximum of 9kg.
16. When a child is able to sit, kneel or to pull itself up, the product should not be used anymore for this child.
17. Do not use the product without frame, keep the fastening belts away from the reach of children.
18. Never allow the child to stand on the bassinet of this product. This can cause this product to fall over thus causing injury to the child. If the child is able to lift itself up drop the bassinet to the lower level.
19. Do not place this product near to a window where cords from blinds or drapes can strangle a child.
20. Do not use this product if any parts are broken, torn or missing.
21. Do not use a water mattress in this product.
22. Never use plastic bags or cellophane as a mattress cover. This can cause suffocation.
23. This product is designed for the use of only one child. This product cannot accommodate more than one child.
24. Always engage the brake when you are not using this product. Please note, by applying the brake one still cannot leave the child unattended and without parent supervision. If the brake is not engaged properly the product will move.
25. Prevent and do not allow any child to climb on to any part of this product. This imbalance of weight can cause this product to topple thus causing injury.

26. Storage compartments are there for convenience and are not suitable for holding large or heavy objects. These areas are also not waterproof or leak proof and spillage can occur.
27. If this product is provided with a mosquito net, please ensure that it is correctly fitted to avoid suffocation.
28. Chelino takes no responsibility and will not be held liable for any damage or injury caused by using this product or if this product is used for any other purposes other than its intended purpose.
29. Please note, there are no warranties or guarantee on any fabric or on the mobile units of this product.

DIMENSION INFO



LENGTH 56.5 CM

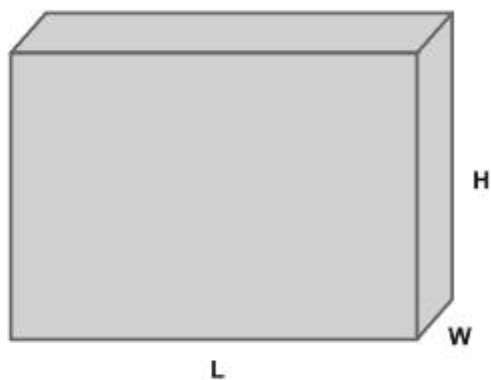
WIDTH 84.4 CM

HEIGHT 122 CM

LENGTH 78.3 CM

WIDTH 48 CM

HEIGHT 46 CM



LENGTH	107 CM	CARTON LENGTH	95 CM
WIDTH	60.5 CM	CARTON WIDTH	26 CM
HEIGHT	55-77 CM	CARTON HEIGHT	57 CM

WEIGHT **15.64 KGS**

ChelinoBaby®

Stores: ChelinoBaby – Ormonde - JHB

ChelinoBaby – Fourways – JHB

ChelinoBaby – Menlyn – Pretoria

ChelinoBaby – Kolonnade-Pretoria

ChelinoBaby – Gateway - Durban

ChelinoBaby – Online –www.chelinobaby.co.za



Importer:

Anchor International

Add: 12 Kimberlite Road , Theta Ext 5 Booyens Reserve ,
JHB 2091 South Africa.

Tel: +2711 835 2520

Info: info@chelinoplatinum.co.za